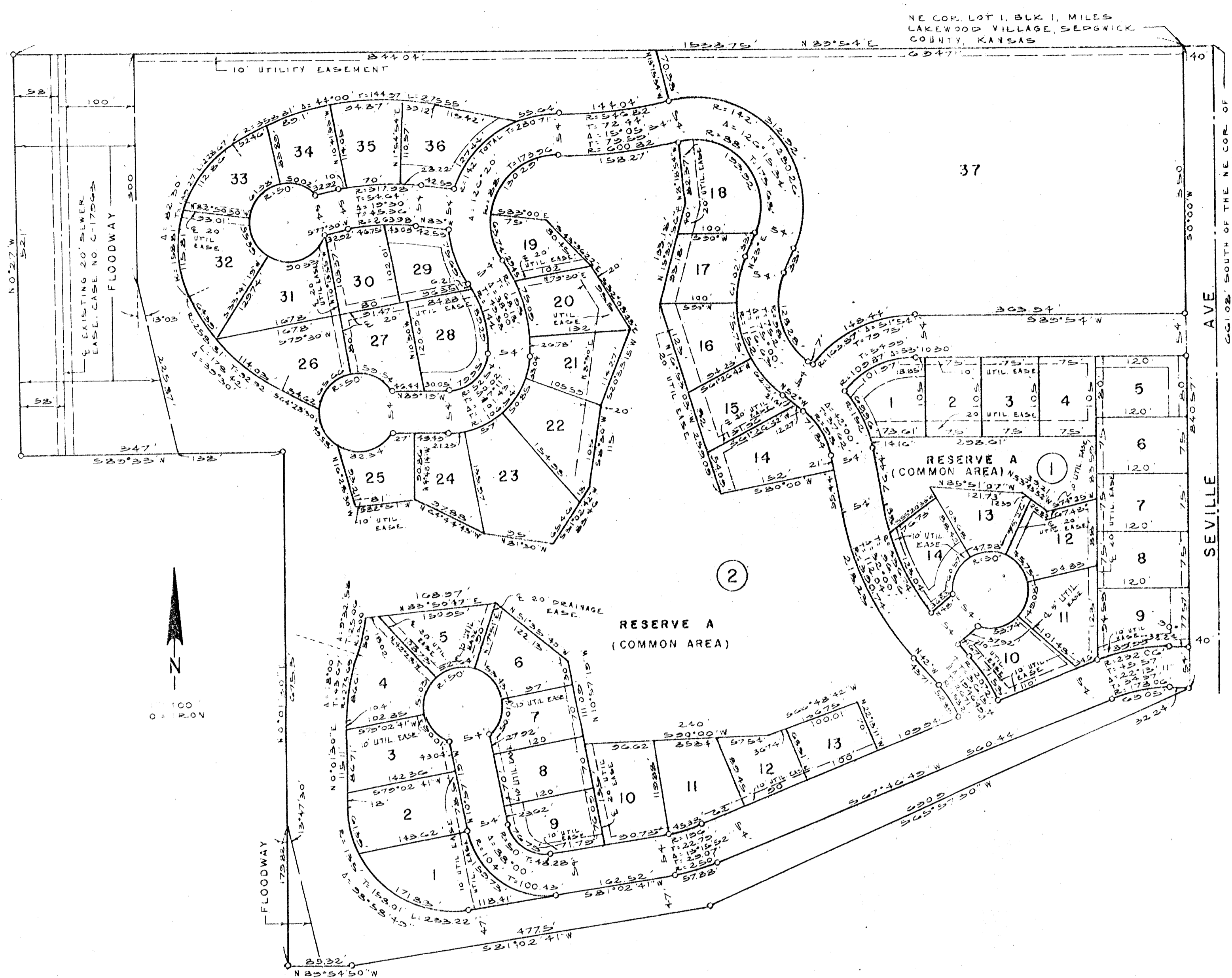


MILES LAKEWOOD VILLAGE SECOND ADDITION

WICHITA, SEDGWICK COUNTY, KANSAS



State of Kansas, County of Sedgwick, SS.

I, Kenneth O. Taylor, Civil Engineer in said State and County, do hereby certify that I have surveyed and platted "MILES LAKEWOOD VILLAGE SECOND ADDITION", Wichita, Sedgwick County, Kansas and that the accompanying plat is a REPLAT OF and a true and correct exhibit of said survey described as follows: Part of Lots 1 and 2, Block 1, Miles Lakewood Village, Sedgwick County, Kansas, described as follows: Beginning at the NE corner of said Lot 1, Block 1 in said Miles Lakewood Village; thence S0°00'W along the east line of said Lot 1, Block 1, 840.37 feet; thence S67°37'30"W, 690.9 feet; thence S81°02'41"W, 477.5 feet; thence N89°54'50"W, 85.32 feet to a point on the west line of said Lot 1, Block 1, 175 feet north of the SW corner of said Lot 1, Block 1; thence N0°01'30"E, 675.3 feet; thence S89°33'W, 347 feet; thence N0°27'W, 521 feet to the NW corner of said Lot 1, Block 1; thence N89°54'E, 1538.75 feet to the point of beginning.

Kenneth O. Taylor, Civil Engineer

Know all men by these presents that Gene Miles Development, Inc. by Gene Miles, President, has caused the land described in the Civil Engineer's certificate to be platted into lots, blocks and streets and reserves (common areas) to be known as "MILES LAKEWOOD VILLAGE SECOND ADDITION", Wichita, Sedgwick County, Kansas. Utility easements as indicated on the plat are hereby granted for the construction and maintenance of all public utilities. The streets are hereby dedicated to and for the use of the public. Reserve A, Block 1 and Reserve A, Block 2 (common areas) are reserved for open space, drainage and utility easements and related community facilities.

The floodways shall be the responsibility of the owners of the property in the subdivision until such time as the governing body exercising jurisdiction elects to assume the responsibility for maintenance and improvement of the drainage, provided further that no buildings shall be constructed on or within said floodways, nor shall any fill, change of grade, creation of channel or other work be carried on without the permission of the Wichita-Sedgwick County Flood Control Office or their successors of office

Gene Miles Development, Inc.

ATTEST: _____, President
Gene Miles
_____, Secretary
Marie Miles

State of Kansas, County of Sedgwick, SS.

The foregoing instrument was acknowledged before me this _____ day of _____, 19____ by Gene Miles, President of Gene Miles Development, Inc., a Kansas corporation, on behalf of the corporation.

_____, Notary Public
My Commission expires: _____

Wichita State Bank by _____, President, mortgagee of the land described in the Civil Engineer's certificate does hereby consent to the platting of "MILES LAKEWOOD VILLAGE SECOND ADDITION", Wichita, Sedgwick County, Kansas.

Wichita State Bank
ATTEST: _____, President

State of Kansas, County of Sedgwick, SS.

The foregoing instrument was acknowledged before me this _____ day of _____, 19____ by _____, President of Wichita State Bank, a Kansas corporation, on behalf of the corporation.

_____, Notary Public
My Commission expires: _____

This plat of "MILES LAKEWOOD VILLAGE SECOND ADDITION", Wichita, Sedgwick County, Kansas has been submitted to and approved by the Wichita-Sedgwick County Metropolitan Area Planning Commission, Wichita, Kansas.

Dated this _____ day of _____, 19____.
Wichita-Sedgwick County Metropolitan Area Planning Commission
By _____, Chairman
William J. Gosbel
_____, Secretary
Robert A. Lakin

This plat approved and all dedications shown hereon accepted by the Board of City Commissioners of the City of Wichita, Kansas, this _____ day of _____, 19____.

_____, Mayor
Tony Casado
_____, City Clerk
Donald C. Gisick

This plat approved and all dedications shown hereon accepted by the Board of County Commissioners of Sedgwick County, Kansas, this _____ day of _____, 19____.

_____, Chairman
Tom Scott
_____, Commissioner
Everett Patrick
ATTEST: _____, Commissioner
John Hale
_____, County Clerk
Dorothy K. White
Entered on transfer record this _____ day of _____, 19____.
_____, County Clerk
Dorothy K. White

State of Kansas, County of Sedgwick, SS.

This is to certify that this instrument was filed for record in the Register of Deeds Office, at _____ o'clock _____, on the _____ day of _____, 19____.

_____, Register of Deeds
Betta F. McCart
_____, Deputy
Pat Kattler