

WEST CENTRAL GARDENS THIRD ADD.

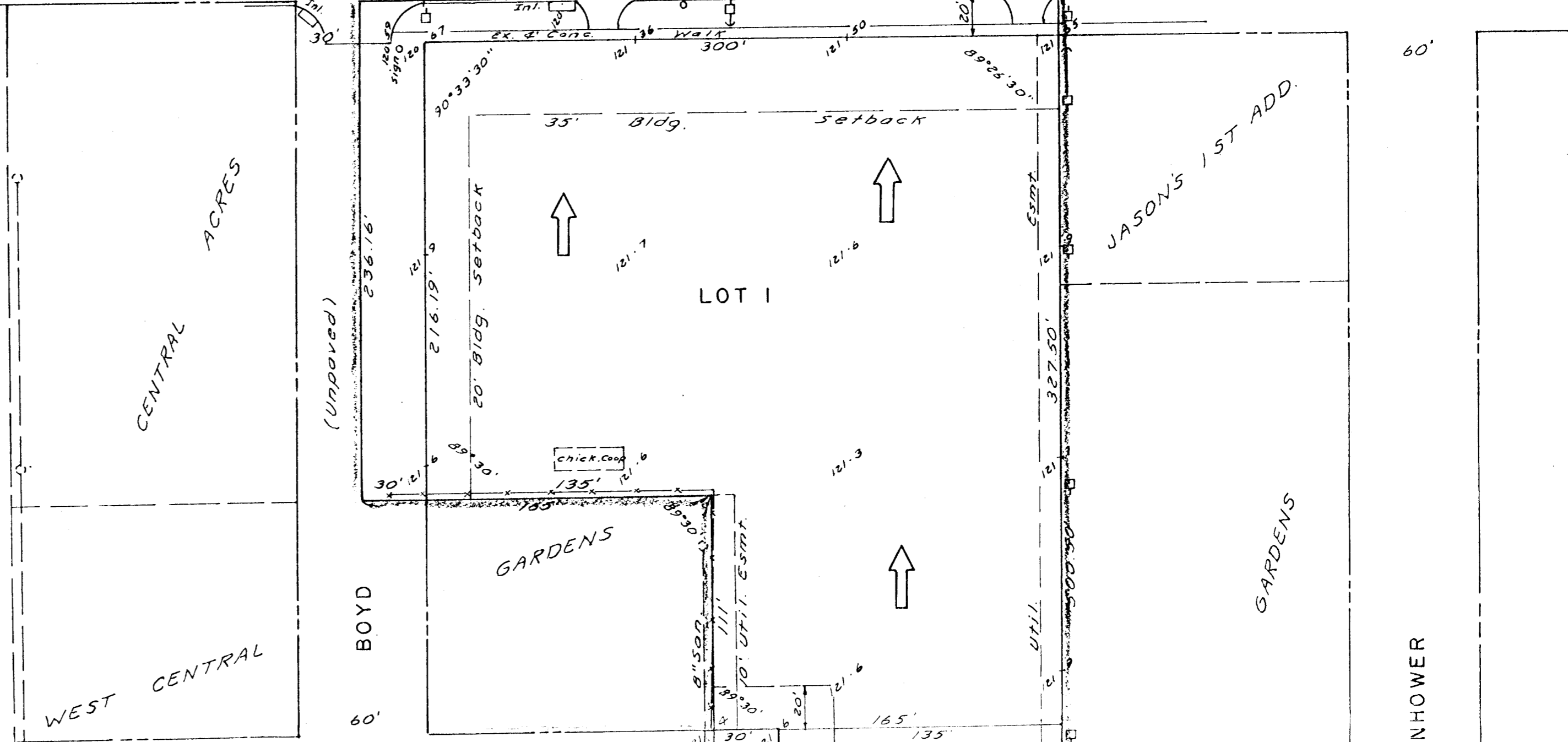
WEST CENTRAL GARDENS

50' 12" Water 50'

CENTRAL AVE.

30' 12" Water 50'

Access Control Exc. 2 Openings



Scale: 1"=50'  
 B.M. City disc. 34'E  
 & 42' N. & Hoover  
 & Central  
 El. 123.29

Note: Lot 1 shall drain to Central via drives, flumes, inlets, or other approved methods

DRAINAGE PLAN  
 SKETCH PLAT  
**MIRES ADDITION**  
 A REPLAT OF PART OF LOTS 11 & 12,  
 CENTRAL ACRES