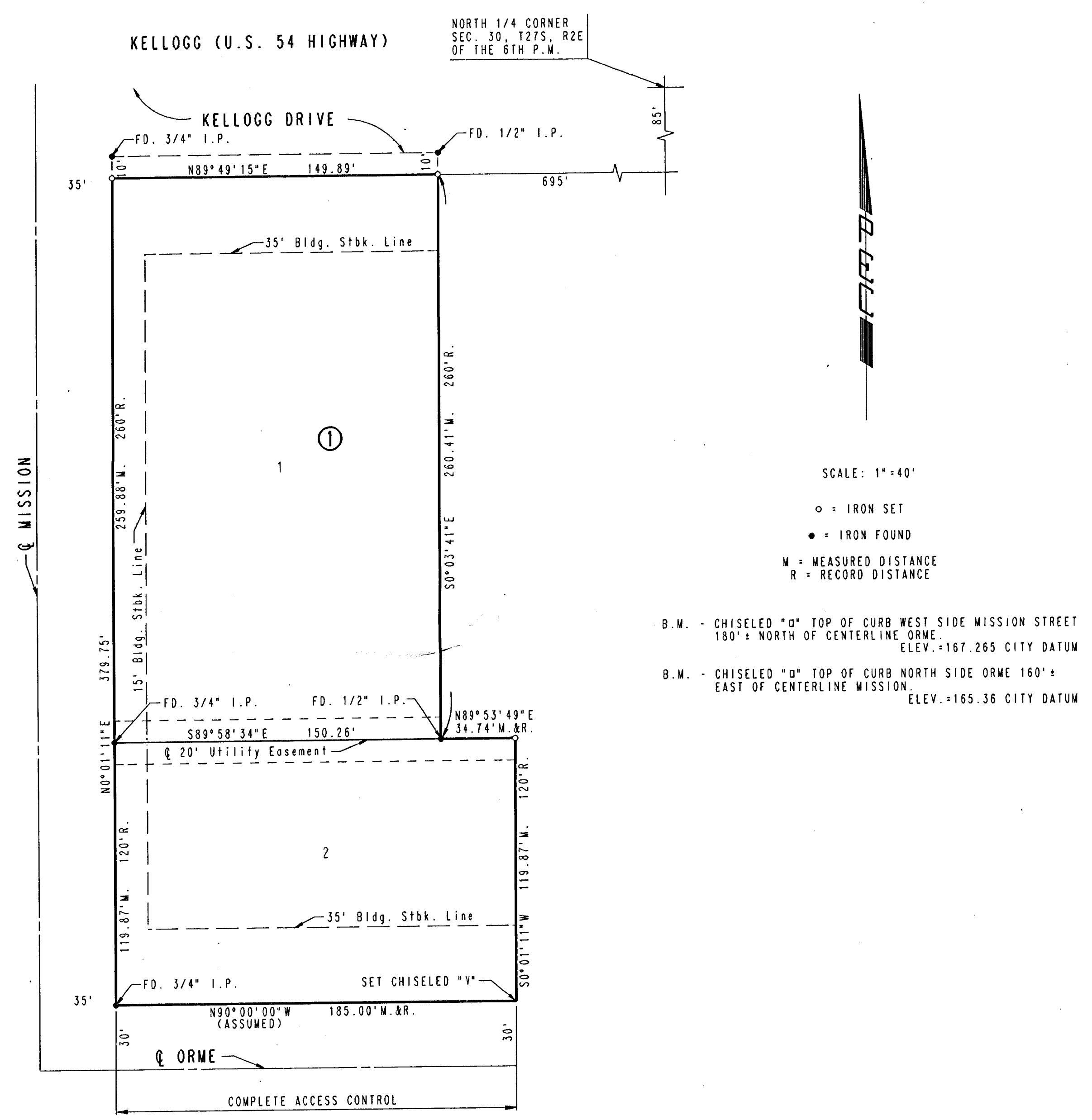


# EAST MISSION 2ND ADDITION TO WICHITA, SEDGWICK COUNTY, KANSAS



SCALE: 1" = 40'

- = IRON SET
- = IRON FOUND
- M = MEASURED DISTANCE
- R = RECORD DISTANCE

STATE OF KANSAS )  
                          ) SS  
COUNTY OF SEDGWICK )

I, MICHAEL W. BERRY, A REGISTERED LAND SURVEYOR IN AFORESAID STATE AND COUNTY, DO HEREBY CERTIFY THAT ON THIS \_\_\_\_\_ DAY OF \_\_\_\_\_, 1994, I HAVE CAUSED TO BE SURVEYED AND PLATTED EAST MISSION 2ND ADDITION, TO WICHITA, SEDGWICK COUNTY, KANSAS, INTO LOTS, A BLOCK AND A STREET, THE SAME BEING A REPLAT OF AND DESCRIBED AS:

LOTS 1, 2, AND 3, EAST MISSION ADDITION TO WICHITA, SEDGWICK COUNTY, KANSAS AND LOTS 1, 2, AND THE WEST 21 FEET OF LOT 3, BLOCK 10, EASTRIDGE, AN ADDITION TO WICHITA, SEDGWICK COUNTY, KANSAS.

ALL PORTIONS OF LOTS 1, 2, AND 3, EAST MISSION ADDITION TO WICHITA, SEDGWICK COUNTY, KANSAS AND LOTS 1, 2, AND THE WEST 21 FEET OF LOT 3, BLOCK 10, EASTRIDGE, AN ADDITION TO WICHITA, SEDGWICK COUNTY, KANSAS ARE HEREBY VACATED AND REPLATTED BY VIRTUE OF K.S.A. 12-512(b) AMENDED.

MICHAEL W. BERRY, R.L.S. NO. 946  
PROFESSIONAL ENGINEERING CONSULTANTS, P.A.

KNOW ALL MEN BY THESE PRESENTS THAT WE, THE UNDERSIGNED PROPERTY OWNERS OF THE LAND AS ABOVE SET FORTH IN THE SURVEYOR'S CERTIFICATE, HAVE CAUSED THE LAND TO BE SURVEYED AND PLATTED INTO LOTS, A BLOCK AND A STREET; THE SAME TO BE KNOWN AS EAST MISSION 2ND ADDITION TO WICHITA, SEDGWICK COUNTY, KANSAS.

EASEMENTS, AS INDICATED FOR THE CONSTRUCTION AND MAINTENANCE OF PUBLIC UTILITIES, ARE HEREBY GRANTED. THE STREET IS HEREBY DEDICATED TO AND FOR THE USE OF THE PUBLIC.

ALL ABUTTERS RIGHT OF ACCESS TO AND FROM ORME STREET OVER AND ACROSS THE SOUTH LINE OF LOT 2, BLOCK 1, ARE HEREBY GRANTED TO THE APPROPRIATE GOVERNING BODY.

OWNER: EVANGELICAL LUTHERAN CHURCH OF THE REFORMATION, INC.

BY \_\_\_\_\_, PRESIDENT  
MARK WETZ

STATE OF KANSAS )  
                          ) SS  
COUNTY OF KANSAS )

BE IT REMEMBERED THAT ON THIS \_\_\_\_\_ DAY OF \_\_\_\_\_, 1994, BEFORE ME, A NOTARY PUBLIC IN AFORESAID STATE AND COUNTY, CAME MARK WETZ, PRESIDENT OF EVANGELICAL LUTHERAN CHURCH OF THE REFORMATION, INC., TO ME PERSONALLY KNOWN TO BE THE SAME PERSON WHO EXECUTED THE FOREGOING INSTRUMENT OF WRITING AND DULY ACKNOWLEDGED THE EXECUTION OF SAME FOR AND ON BEHALF AND AS THE VOLUNTARY ACT AND DEED OF SAID CORPORATION, IN TESTIMONY WHEREOF I HAVE HEREUNTO SET MY HAND AND AFFIXED MY NOTARIAL SEAL THE DAY AND YEAR ABOVE WRITTEN.

\_\_\_\_\_, NOTARY PUBLIC

MY COMMISSION EXPIRES \_\_\_\_\_

WE, BANK IV, N.A., HOLDER OF A MORTGAGE ON THE ABOVE DESCRIBED PROPERTY, DO HEREBY CONSENT TO THE PLATTING OF EAST MISSION 2ND ADDITION TO WICHITA, SEDGWICK COUNTY, KANSAS.

T. STEVE MATTINGLY, SENIOR VICE-PRESIDENT

STATE OF KANSAS )  
                          ) SS  
COUNTY OF KANSAS )

BE IT REMEMBERED THAT ON THIS \_\_\_\_\_ DAY OF \_\_\_\_\_, 1994, BEFORE ME, A NOTARY PUBLIC IN AFORESAID STATE AND COUNTY, CAME T. STEVE MATTINGLY, SENIOR VICE-PRESIDENT OF BANK IV KANSAS, N.A., TO ME PERSONALLY KNOWN TO BE THE SAME PERSON WHO EXECUTED THE FOREGOING INSTRUMENT OF WRITING AND DULY ACKNOWLEDGED THE EXECUTION OF SAME FOR AND ON BEHALF AND AS THE VOLUNTARY ACT AND DEED OF SAID BANK, IN TESTIMONY WHEREOF I HAVE HEREUNTO SET MY HAND AND AFFIXED MY NOTARIAL SEAL THE DAY AND YEAR ABOVE WRITTEN.

\_\_\_\_\_, NOTARY PUBLIC

MY COMMISSION EXPIRES \_\_\_\_\_

THIS PLAT HAS BEEN SUBMITTED TO AND APPROVED BY THE WICHITA-SEDGWICK COUNTY METROPOLITAN AREA PLANNING COMMISSION, WICHITA, KANSAS. DATED THIS \_\_\_\_\_ DAY OF \_\_\_\_\_, 1994.

\_\_\_\_\_, CHAIRMAN  
JAMES D. WINER

\_\_\_\_\_, SECRETARY  
MARVIN S. KROUT

THIS PLAT APPROVED AND ALL DEDICATIONS SHOWN HEREON ARE ACCEPTED BY THE CITY COUNCIL OF THE CITY OF WICHITA, KANSAS. DATED THIS \_\_\_\_\_ DAY OF \_\_\_\_\_, 1994.

\_\_\_\_\_, MAYOR  
ELMA BROADFOOT

\_\_\_\_\_, DEPUTY CITY CLERK  
PAT BURNETT

ENTER ON TRANSFER RECORD THIS \_\_\_\_\_ DAY OF \_\_\_\_\_, 1994.

\_\_\_\_\_, COUNTY CLERK  
SUSAN E. CROCKETT-SPOON

THIS IS TO CERTIFY THAT THIS INSTRUMENT WAS FILED FOR RECORD IN THE REGISTER OF DEEDS OFFICE AT \_\_\_\_\_ M., ON THIS \_\_\_\_\_ DAY OF \_\_\_\_\_, 1994.

\_\_\_\_\_, REGISTER OF DEEDS  
PAT KETTLER

\_\_\_\_\_, DEPUTY  
ED RESA