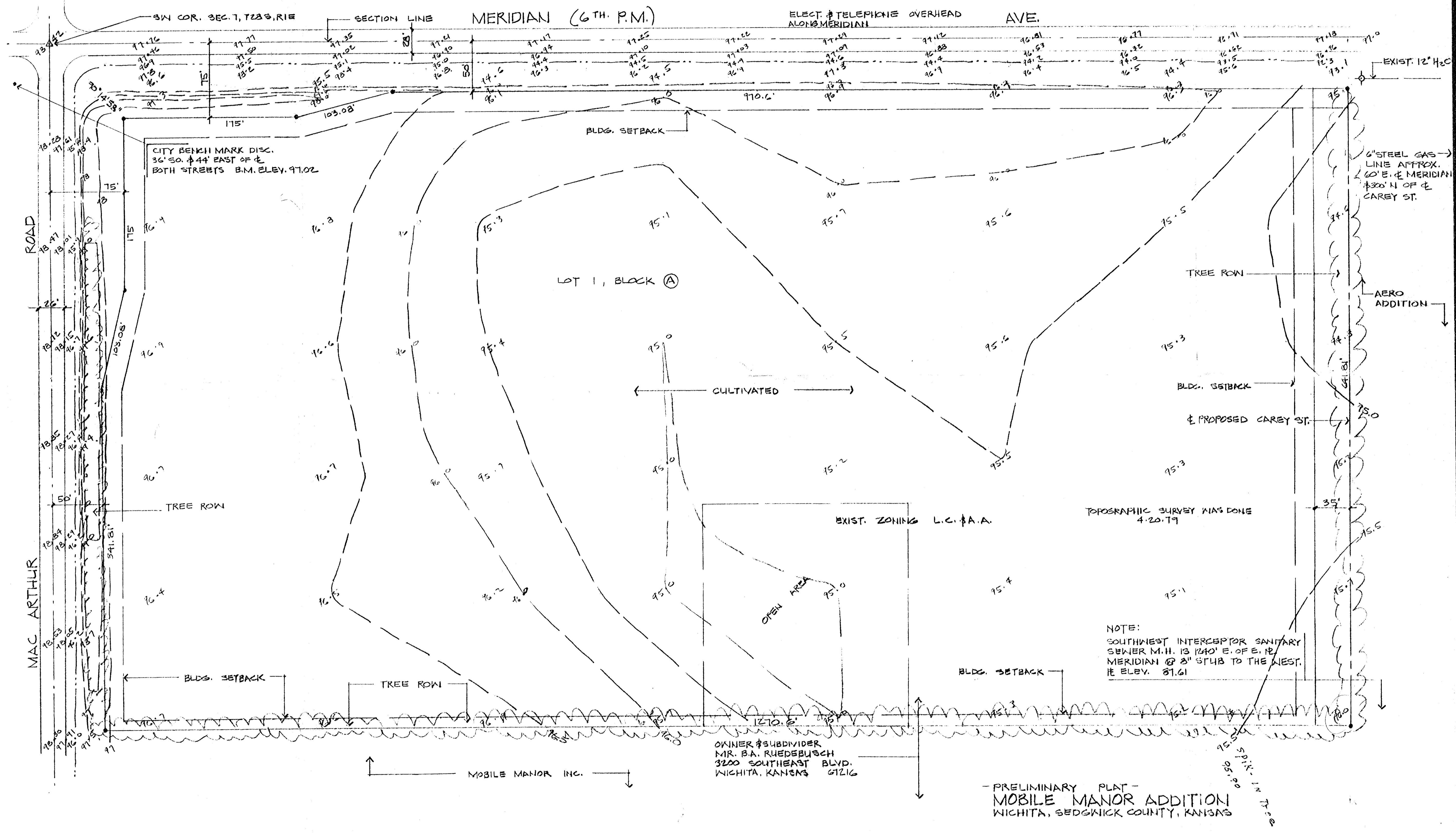
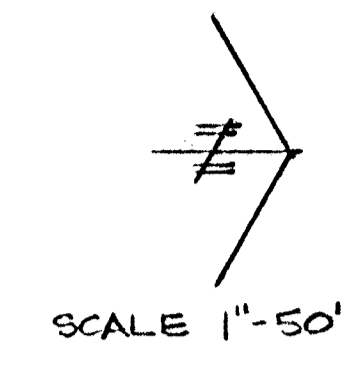


HALL & ASSOCIATES

LAND SURVEYORS
TELEPHONE 316-685-2304



-PRELIMINARY PLAT-
MOBILE MANOR ADDITION
WICHITA, SEDGWICK COUNTY, KANSAS

PROJECT 19-481	
RUEDEBUSCH	
LOCATION WICHITA, KANS.	
DRAWN BY	DATE
JK	4/23/79
CHECKED BY	DATE
JK	4/23/79