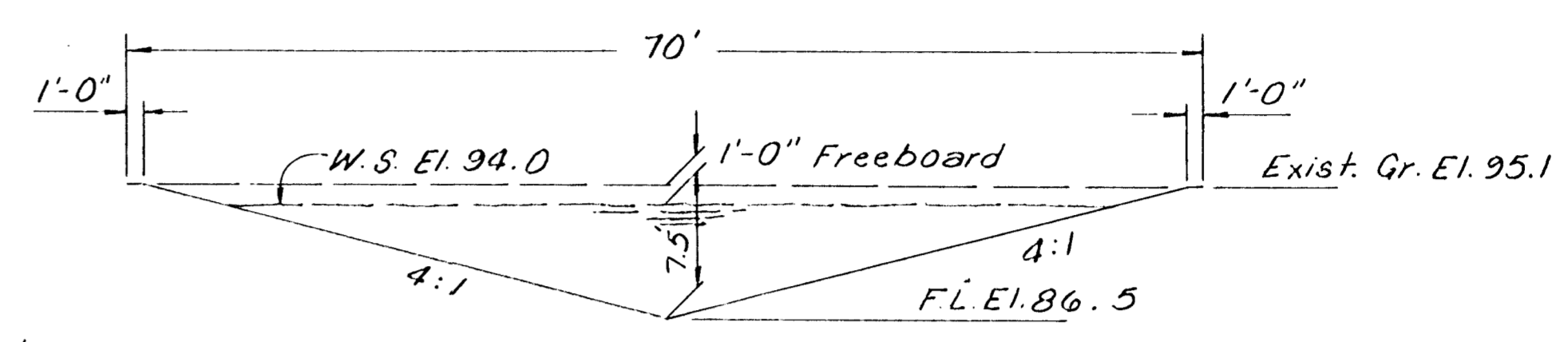
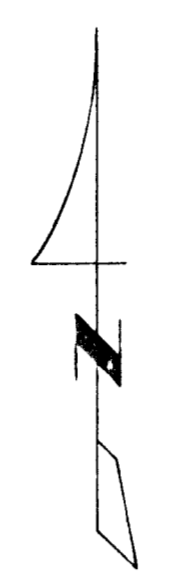
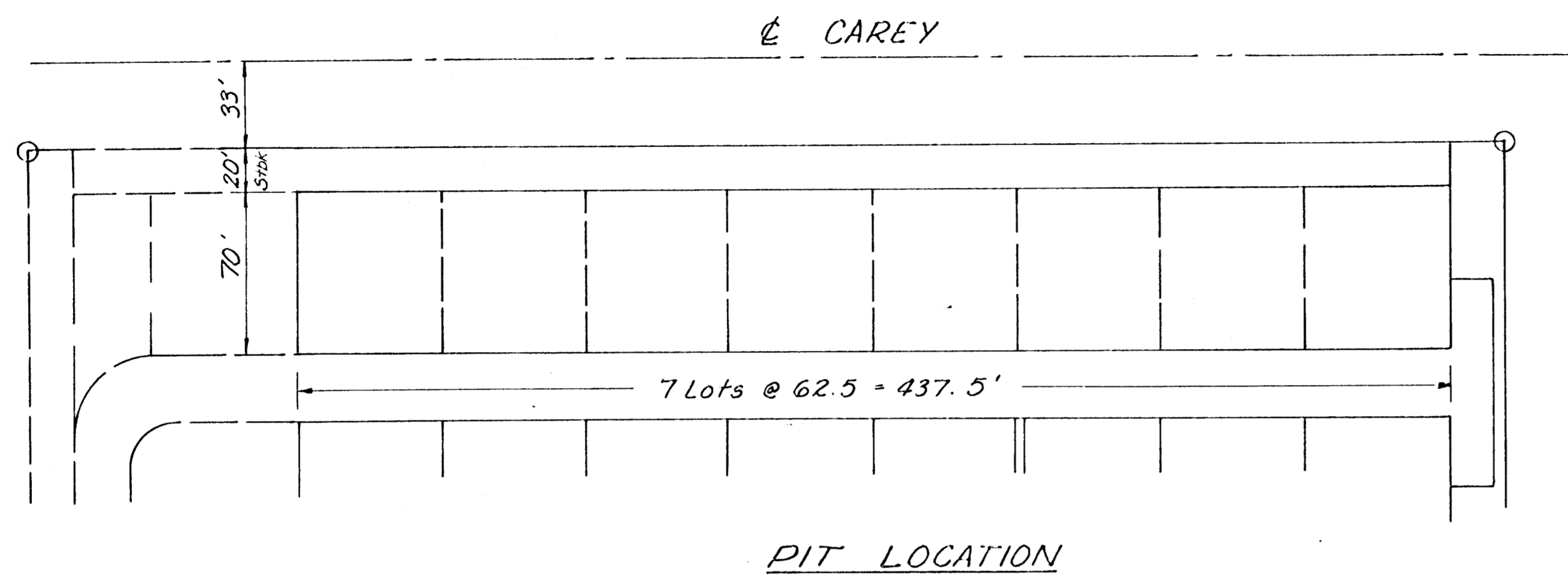


SURV. PLOT. DES. DR. TR. CKD. APP.

MERIDIAN

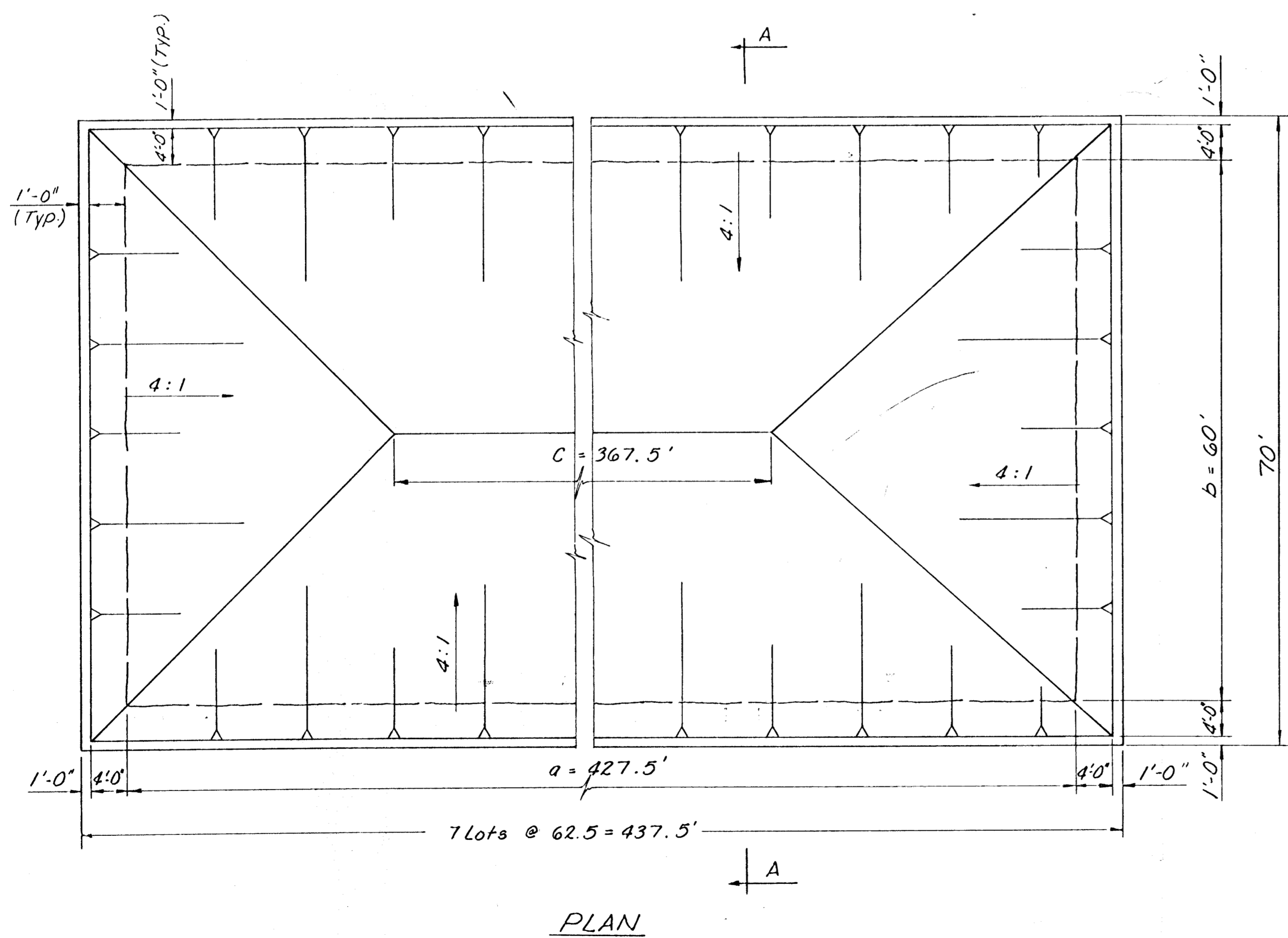


* Ground Water
El. 127.2 M.S.L.
= 84.6 Cof W.

* K.G.S. Bull. 176

Capacity Calculation:

$$\begin{aligned} \text{Capacity } V &= (2a+c) \times bh/6 \\ a &= 427.5' \\ b &= 60' \\ h &= 7.5' \\ V &= 91,688 \text{ Cu Ft.} \\ &= 2.11 \text{ Acre. Ft. (99.1\% of 2.13)} \end{aligned}$$



OCT 28 1980

<p>DETAILS OF STORAGE PIT FOR MOBILE MANOR ADDITION B.A. RUEDEBUSH, OWNER</p>		
<p>DELAMATER, FREUND & ASSOCIATES, P.A. ENGINEERS & ARCHITECTS WICHITA, KANSAS</p>		
<p>SCALE</p>	<p>DATE OCTOBER, 1980</p>	<p>DWG. NO. 223-E-102</p>