

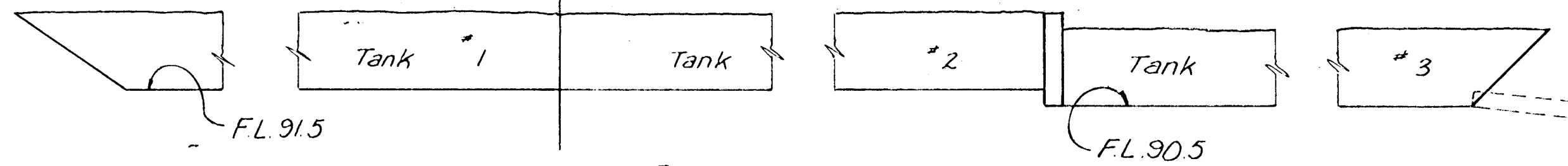
MOBILE MANOR
ADDITION

MOBILE MANOR
INC.

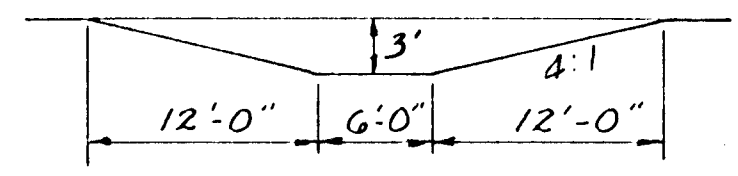
STORAGE CAPACITY

#1	18 x 3 x 635	=	34,290
2	16 x 3 x 610±	=	29,280
3	16 x 3 x 610	=	29,280
			<u>92,850</u>
			= 2.13 Ac.Ft.

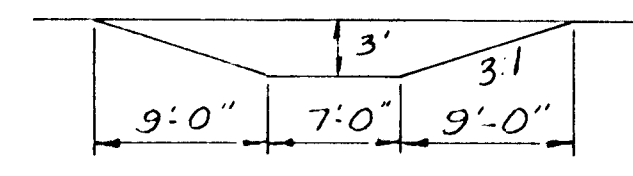
MERIDIAN



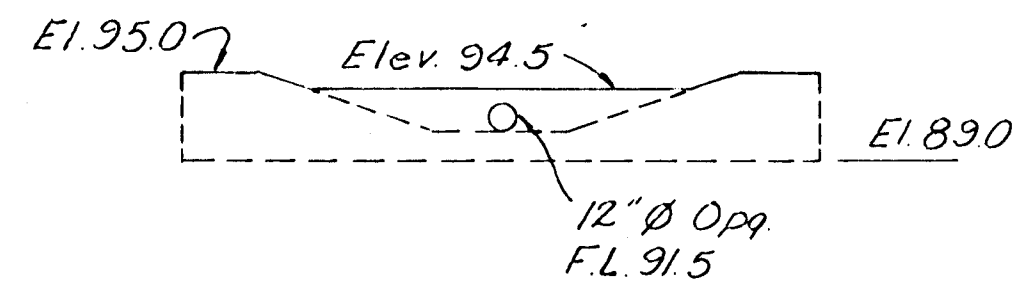
PROFILE



A-A



B-B



WIER ELEVATION

8" wall # 5 bars
@ 12" ea. way

**PROPOSED FLOOD
STORAGE**

MOBILE MANOR ADDITION
DELAMATER, FREUND & ASSOCIATES
JULY 16, 1980