

# PRELIMINARY PLAT MOBILE MANOR SOUTH 2ND ADDITION

WICHITA, SEDGWICK COUNTY, KANSAS

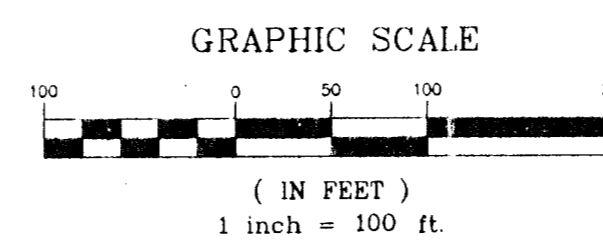
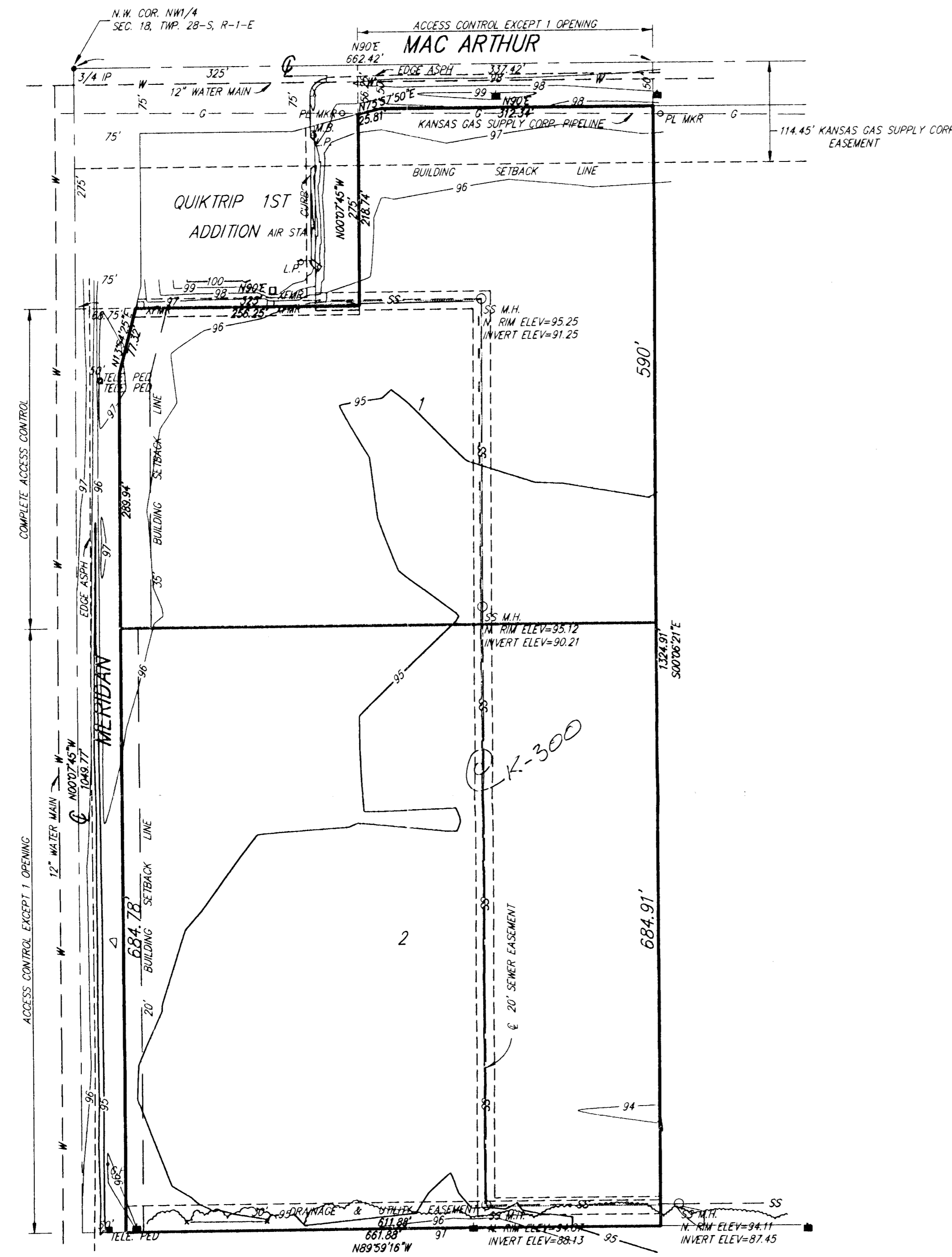
**DESCRIPTION:**

The W1/2 of the NW1/4 of the NW1/4 of Sec. 18, Twp. 28-S, R-1-E of the 6th P.M., Sedgwick, County Kansas, except the West 325 feet of the North 275 feet thereof.

Richard J. Peckham  
Mobile Manor, Inc.  
105 E. Rhonda  
Andover Ks. 67002

Ph. 733-2001

GROSS SIZE:  
717724.10 Sq. Ft. ±  
16.48 Acres ±



BENCH MARK: CITY OF WICHITA, IJSC  
N.W. COR INTERSECTION OF MAC ARTHUR RD. & MERIDIAN AVE.  
ELEV=97.46 (CITY DATUM)