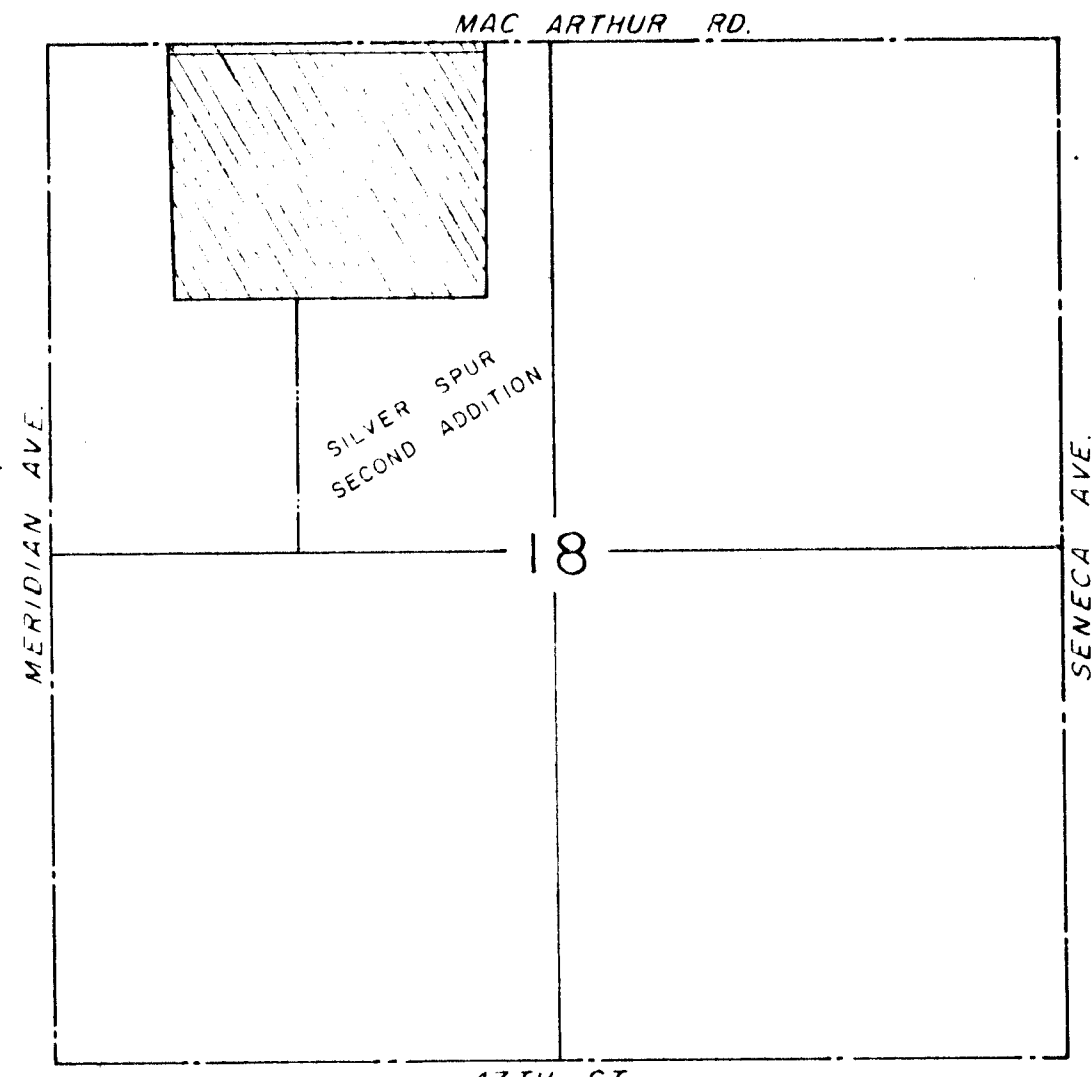
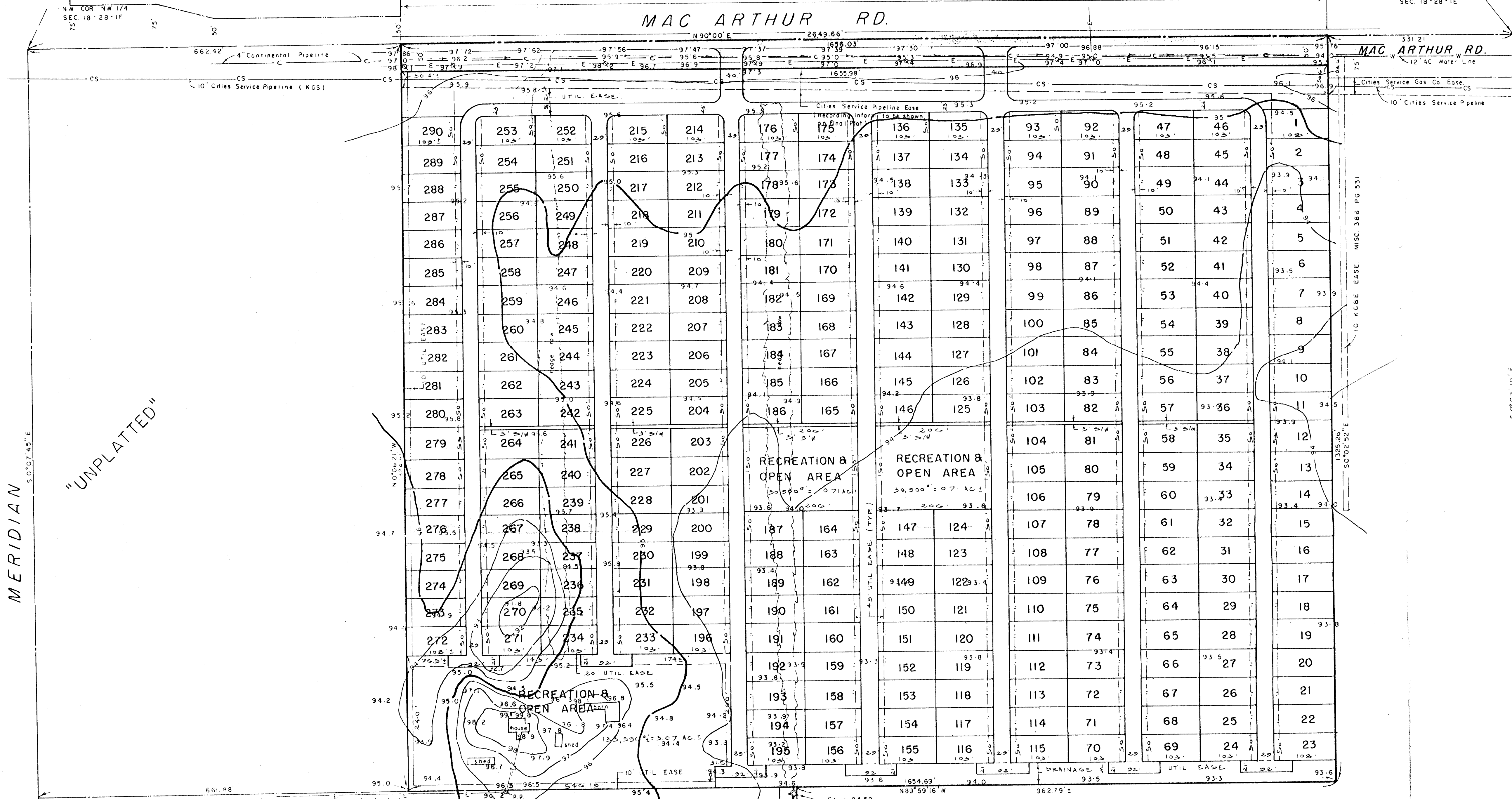


MOBILE MANOR ADD.

MAC ARTHUR RD.

MAC ARTHUR RD.



47TH ST.
VICINITY MAP
1" = 1000'



SITE DEVELOPMENT PLAN

MOBILE MANOR
SOUTH

FOR: B. A. RUEDEBUSCH
3200 S.E. BLVD.
WICHITA, KANSAS

B.M. - ELEV. 97.02 - CITY DISC 36' S. & 44' E.
OF MERIDIAN & MacARTHUR RD.

GENERAL NOTES:
 TOTAL LOT AREA = 2,110,693 S.F. = 48.45 AC ±
 OPEN AREA = 195,396 S.F. = 4.49 AC ±
 RECREATION AND OPEN AREA = 9.26% OF
 NET AREA OF LOT 1.
 ALL PRIVATE STREETS SHOWN ARE 29 FEET
 BACK OF CURB TO BACK OF CURB, EXCEPT
 AS DIMENSIONED.
 NO PARKING SHALL BE PERMITTED ON THE
 WEST SIDE OF ALL NORTH & SOUTH PRIVATE
 STREETS WITH "NO PARKING" SIGNS
 POSTED ACCORDINGLY.
 NO PARKING PERMITTED ON EITHER SIDE OF
 THE EAST & WEST PRIVATE STREET.

290 TOTAL NUMBER OF UNITS
 290 UNITS / 48.45 NET ACRES = 5.99 UNITS PER ACRE

TOPO MADE JANUARY, 1983

LOWELL D. HIGH
FEBRUARY 18, 1983