

Lot 1, Block 1 shall have access to 32ND Street North as per Access Agreement recorded on Film 1089, Page 149

20' Util. Easmt. Drng. Film 991, Pg. 621  
 67.53' Easmt. Drng.  
 73° 32' 13\"/>

1

2

3

Complete Access Control

Private Access Control

385.37'

N. 89° 12' 17\"/>

374.29'

Util.

Easmt.

202.14'

S. 74° 56' 16\"/>

80.00'

Easmt.

20' Util.

393.67'

N. 0° 55' 48\"/>

180.00'

S. 0° 55' 48\"/>

337.96'

Drainage Easement

80' Temporary

209.04'

20'

Drng.

Blldg.

205.40'

35'

80'

Temporary

Drainage

Easement

Blldg.

Drng.

185.00'

3

N. 89° 04' 12\"/>

10' 195.00' Util.

Easmt.

Blldg.

Stbk.

S. 05° 18' 50\"/>

94.92'

85.51'

S. 0° 53' 18\"/>

247.00'

161.49'

35'

161.49'

20' Util. Easmt.

49.00'

N. 0° 53' 18\"/>

Easmt.

Stbk.

18'

18'

45.82'

195.00'

Easmt.

Easmt.

Blldg.

20'

35'

80'

Temporary

35'

205.40'

180.00'

N. 0° 55' 48\"/>

337.96'

S. 0° 55' 48\"/>

393.67'

S. 74° 56' 16\"/>

80.00'

202.14'

374.29'

N. 89° 12' 17\"/>

385.37'

S. 05° 18' 50\"/>

94.92'

85.51'

S. 0° 53' 18\"/>

247.00'

161.49'

35'

161.49'

20' Util. Easmt.

49.00'

N. 0° 53' 18\"/>

Easmt.

Stbk.

18'

18'

45.82'

195.00'

Easmt.

Easmt.

Blldg.

20'

35'

80'

Temporary

Drng.

Blldg.

209.04'

205.40'

35'

80'

Temporary

Drainage

Easement

Blldg.

185.00'

3

N. 89° 04' 12\"/>

10' 195.00' Util.

Easmt.

Blldg.

Stbk.

18'

18'

45.82'

195.00'

Easmt.

Easmt.

Blldg.

20'

35'

80'

Temporary

Drng.

Blldg.

209.04'

205.40'

35'

80'

Temporary

Drainage

Easement

Blldg.

185.00'

3

N. 89° 04' 12\"/>

10' 195.00' Util.

Easmt.

Blldg.

Stbk.

18'

18'

45.82'

195.00'

Easmt.

Easmt.

Blldg.

20'

35'

80'

Temporary

Drng.

Blldg.

209.04'

205.40'

35'

80'

Temporary

Drainage

Easement

Blldg.

185.00'

3

N. 89° 04' 12\"/>

10' 195.00' Util.

Easmt.

Blldg.

Stbk.

18'

18'

45.82'

195.00'

Easmt.

Easmt.

Blldg.

20'

35'

80'

Temporary

Drng.

Blldg.

209.04'

205.40'

35'

80'

Temporary

Drainage

Easement

Blldg.

185.00'

3

N. 89° 04' 12\"/>

10' 195.00' Util.

Easmt.

Blldg.

Stbk.

18'

18'

45.82'

195.00'

Easmt.

Easmt.

Blldg.

20'

35'

80'

Temporary

Drng.

Blldg.

209.04'

205.40'

35'

80'

Temporary

Drainage

Easement

Blldg.

185.00'

3

N. 89° 04' 12\"/>

10' 195.00' Util.

Easmt.

Blldg.

Stbk.

18'

18'

45.82'

195.00'

Easmt.

Easmt.

Blldg.

20'

35'

80'

Temporary

Drng.

Blldg.

209.04'

205.40'

35'

80'

Temporary

Drainage

Easement

Blldg.

185.00'

3

N. 89° 04' 12\"/>

10' 195.00' Util.

Easmt.

Blldg.

Stbk.

18'

18'

45.82'

195.00'

Easmt.

Easmt.

Blldg.

20'

35'

80'

Temporary

Drng.

Blldg.

209.04'

205.40'

35'

80'

Temporary

Drainage

Easement

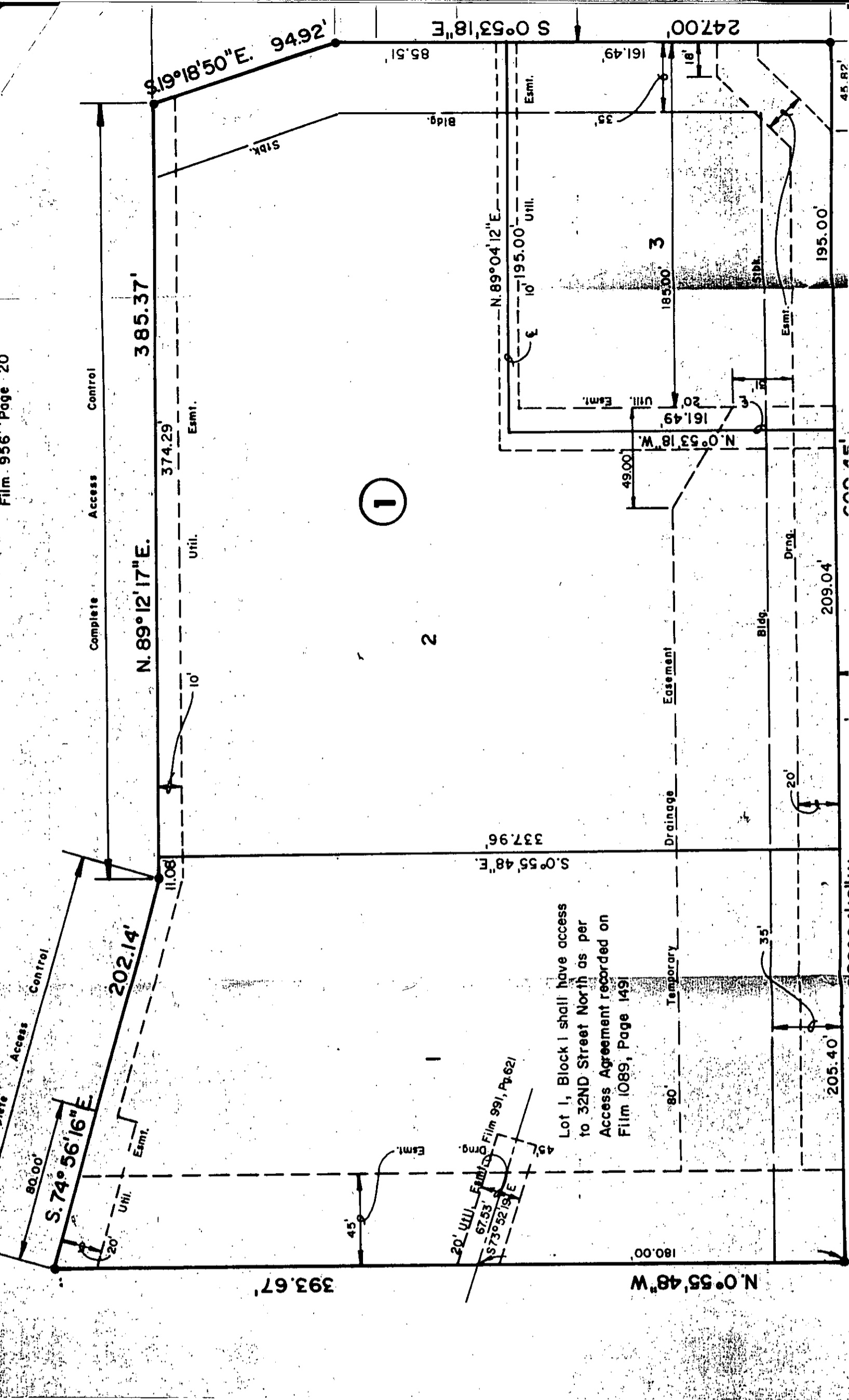
Blldg.

185.00'

3

N. 89° 04' 12\"/>





1

2

Lot 1, Block 1 shall have access  
to 32ND Street North as per  
Access Agreement recorded on  
Film 1089, Page 149

20' Util. Easmt. Film 991, Pg 621  
67.53' S 73° 52' 19" E  
45'