

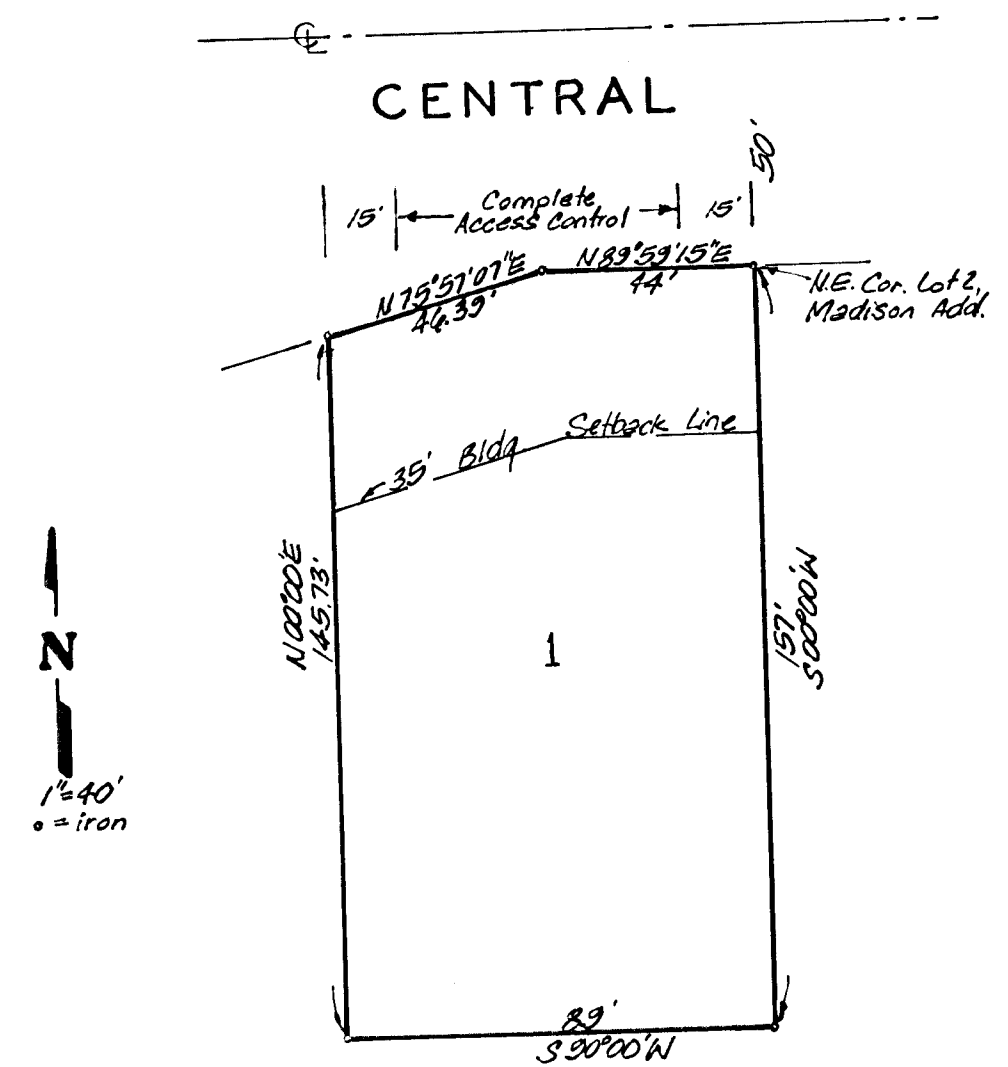
# SCHLOTZSKY'S ADDITION

WICHITA, KANSAS

State of Kansas } ss. We, Baughman Company, P.A., Surveyors  
 Sedgwick County } in aforesaid county and state do hereby certify that we have  
 surveyed and platted "SCHLOTZSKY'S ADDITION," Wichita,  
 Kansas, and that the accompanying plat is a true and correct  
 exhibit of the property described as and being a replat of  
 that part of Lot 2, Madison Addition, Wichita, Kansas, be-  
 ginning at the N.E. Corner of said Lot 2; thence S 00°00'W  
 along the east line of said Lot 2, 157 feet; thence S 30°00'W,  
 89 feet; thence N 00°00'E, 145.73 feet to a point on the north  
 line of said Lot 2; thence N 75°57'07"E along the north line of  
 said Lot 2, 46.39 feet to a deflection point in said north line;  
 thence N 89°59'15"E, 44 feet to the place of beginning. Being  
 situated in the NW 1/4 of Sec. 19, Twp 27-S, R-2-E of the 6th  
 P.M., Sedgwick County, Kansas

Baughman Company, P.A.

Date \_\_\_\_\_ Surveyor  
 Gregory F. Severns



Know all men by these presents that we,  
 the undersigned, have caused the land described in the survey-  
 ors certificate to be platted into a lot to be known as "SCH-  
 LOTZSKY'S ADDITION," Wichita, Kansas. All abutters rights  
 of access to or from Central Ave. over and across the north  
 line of Lot 1 except the east 15 feet and except the west 15  
 feet thereof are hereby granted to the City of Wichita, Kansas.

This plat of "SCHLOTZSKY'S ADDITION,"  
 Wichita, Kansas, has been submitted to and approved by the  
 Wichita-Sedgwick County Metropolitan Area Planning Commission,  
 Wichita, Kansas.

Dated this \_\_\_\_\_ day of \_\_\_\_\_  
 Wichita-Sedgwick County Metropolitan Area Planning Commission

Michael J. Boyd

Chairmen  
 Sue L. Crockett  
 Secretary  
 Marvin S. Krout

State of Kansas } ss. The foregoing instrument acknowledged  
 Sedgwick County } before me this \_\_\_\_\_ day of \_\_\_\_\_, 1989, by Michael  
 J. Boyd.

This plat approved and all dedications  
 shown hereon accepted by the City Council of the City of Wichita,  
 Kansas, this \_\_\_\_\_ day of \_\_\_\_\_, 1989.

Notary Public  
 My App't Exp. \_\_\_\_\_

Mayor  
 Robert G. Knight  
 City Clerk  
 John Moir

We, the undersigned, holders of a mort-  
 gage on the above described property do hereby consent to  
 the plat of "SCHLOTZSKY'S ADDITION," Wichita, Kansas.

Entered on transfer record this \_\_\_\_\_  
 day of \_\_\_\_\_, 1989.

Bank IV

County Clerk  
 Don Wright

State of Kansas } ss. The foregoing instrument acknowledged  
 Sedgwick County } before me this \_\_\_\_\_ day of \_\_\_\_\_, 1989, by \_\_\_\_\_  
 of Bank IV, on behalf  
 of the corporation.

State of Kansas } ss. This is to certify that this plat has been  
 Sedgwick County } filed for record in the office of the Register of Deeds this \_\_\_\_\_  
 day of \_\_\_\_\_, 1989, \_\_\_\_\_ o'clock, \_\_\_\_\_ M., and is duly recorded.

Notary Public  
 My App't Exp. \_\_\_\_\_

Register of Deeds  
 Pat Kettler  
 Deputy  
 Ed Resa