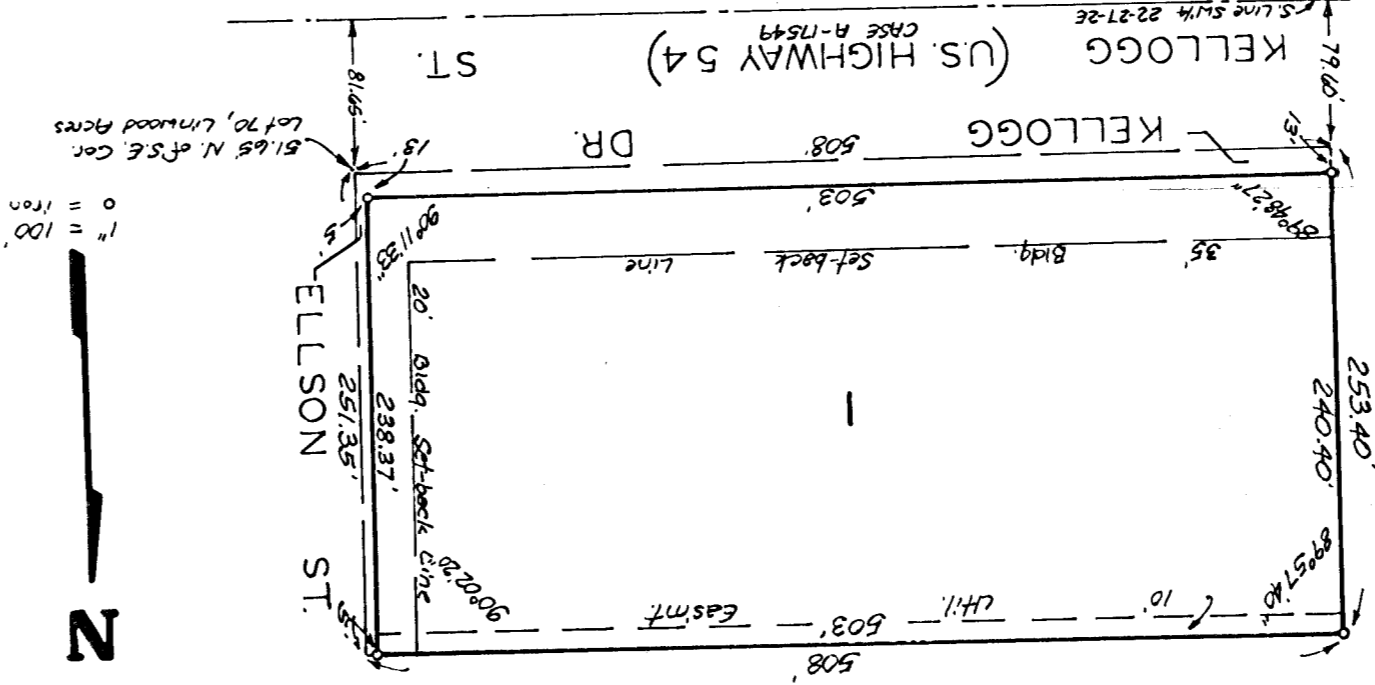


SCHOLFIELD BROS. ADDITION

WICHITA, KANSAS.



State of Kansas } ss. We, Baughman Company P.A. Surveyors
Sedgewick County and State do hereby certify that we have
in abovesaid county and state do hereby certify that we have
surveyed and platted "SCHOLFIELD BROS. ADDITION", with-
in abovesaid county and state do hereby certify that we have
its Kansas and that the accompanying plat is a true and
correct exhibit of the property surveyed, described as and
being a replat of lots 67, 68, 69 and 70, Linwood Acres, Sedg-
wick County, Kansas, being situated in the SW 1/4 of Sec. 22, Twp.
27S, R.2E.

Date _____
Surveyor _____
Baughman Company, P.A.
William L. Korber
Know all men by these presents that we,
the undersigned, have caused the land described in the sur-
veyors certificate to be platted into a lot and streets to be
known as "SCHOLFIELD BROS. ADDITION", which
Kansas. Easements are hereby granted as indicated for
the construction and maintenance of all public utilities.
The streets are hereby dedicated to and for the use of the
public.

State of Kansas } ss. The foregoing instrument was acknowledged
Sedgewick County, 1980, by Victor H. Scholfield and
before me, this _____ day of _____
1980, by Victor H. Scholfield and
Virginia L. Scholfield, his wife and James R. Scholfield and
Earllyn Scholfield, his wife;
Virginia L. Scholfield, his wife and Gene L. Scholfield and Len's
Earllyn Scholfield, his wife;
My Appointment Exp. _____
Notary Public _____

This plat of "SCHOLFIELD BROS. ADDI-
TION" Wichita, Kansas, has been submitted to and approved
by the Wichita-Sedgewick County Metropolitan Area Planning
Commission, Wichita, Kansas.
Dated this _____ day of _____
1980.

Chairman _____
Michael J. Savina
Secretary _____
Robert A. Latin

This plat approved and all dedications
shown hereon accepted by the Board of Commissioners of
the City of Wichita, Kansas, this _____ day of _____
1980.

Mayor _____
Robert G. Knight
City Clerk _____
Donald C. Gistek

This plat approved and all dedications
shown hereon accepted by the Board of Commissioners of
Sedgewick County, Kansas, this _____ day of _____
1980.

Chairman _____
Everett Patrick
Commissioner _____
Tom Scott
Commissioner _____
Donald E. Graag
County Clerk _____
Dorothy K. White

Entered on transfer record this _____
day of _____
1980.

County Clerk _____
Dorothy K. White

State of Kansas } ss. This is to certify that this plat has
Sedgewick County, been filed for record in the office of the Register
of Deeds, M., and is duly recorded.
_____ day of _____
1980, at _____
O'Leary, M.,

Register of Deeds _____
Beth F. McCarroll
Deputy _____
Pat Kettler