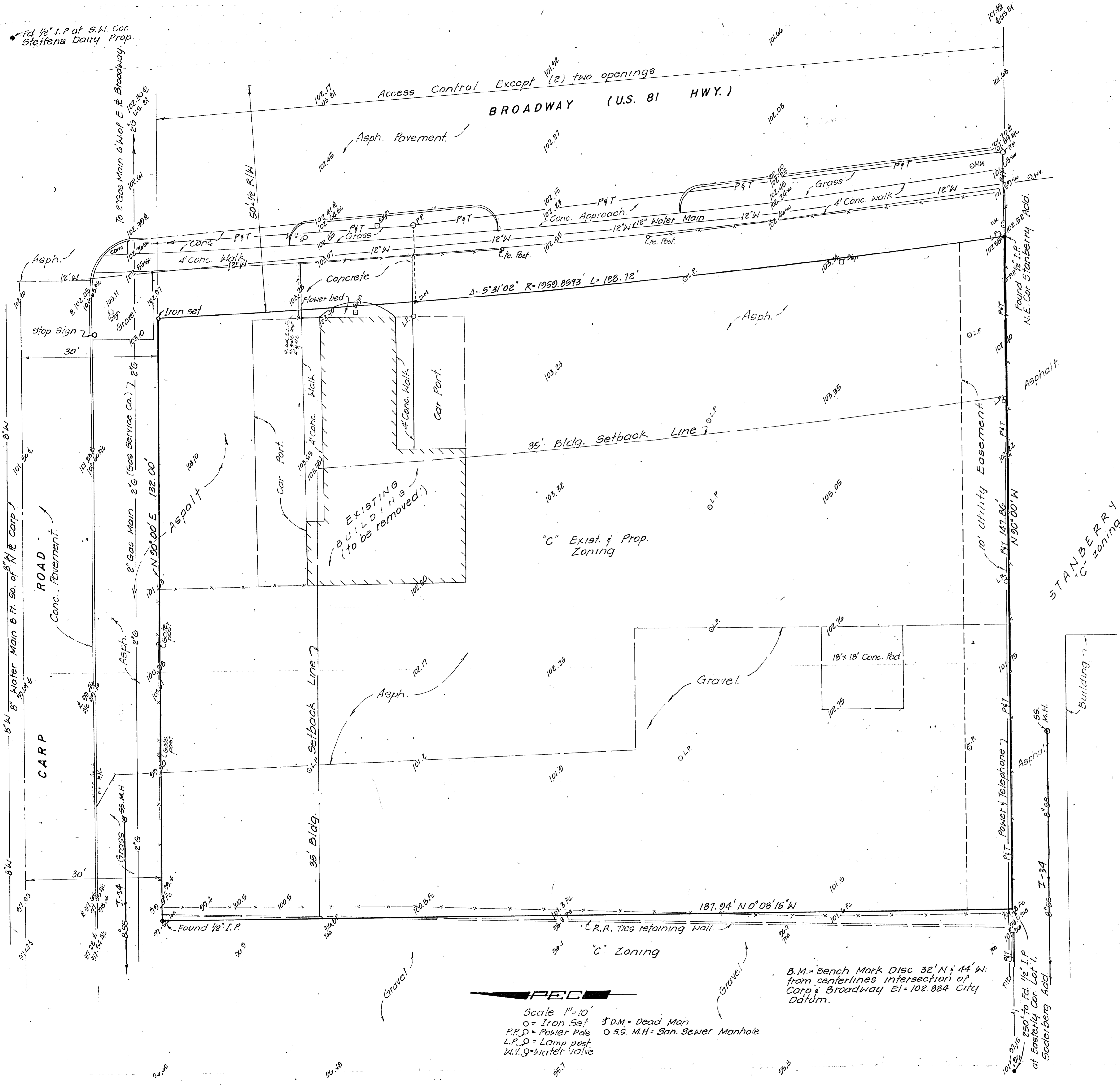


Found 1/2" I.P. at S.W. Cor. Steffens Dairy Prop.

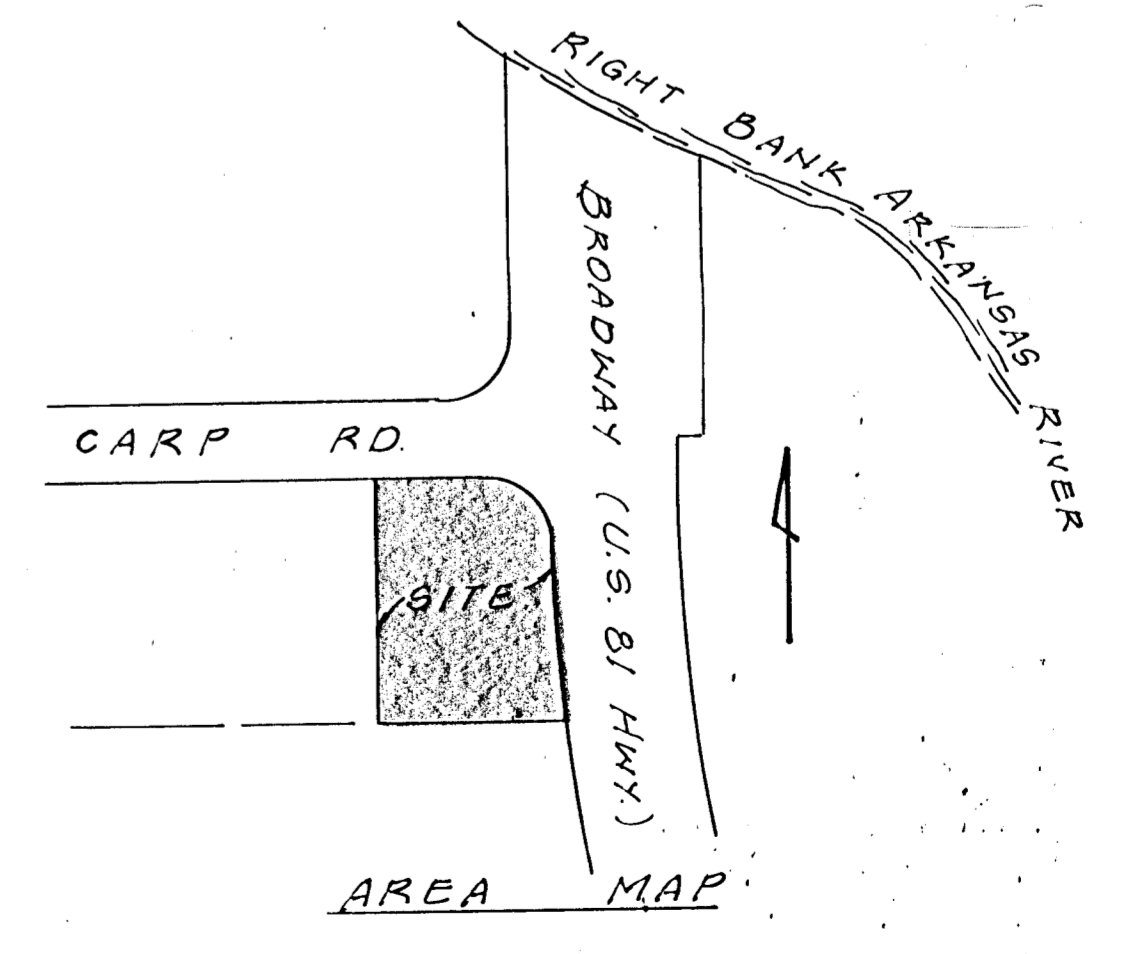


**SCHOLFIELD-HATCHETT PLAT**  
 WICHITA, SEDGWICK COUNTY, KANSAS.

OWNER: SCHOLFIELD-HATCHETT PARTNERSHIP  
 11212 E. KELLOGG, Wichita, Ks. 67207

ENGINEER: P.E.C. p.a.  
 1440 ENGLISH, Wichita, Ks. 67211

JULY, 1986



**P.E.C.**  
 Scale 1"=10'  
 O = Iron Set  
 P.P.D = Power Pole  
 L.P.D = Lamp post  
 W.V.G = Water Valve  
 S.D.M = Dead Man  
 O.S.S.M.H = San. Sewer Manhole

B.M. = Bench Mark Disc 32" N x 44" W.  
 from centerlines intersection of  
 Carp & Broadway El = 102.884 City  
 Datum.

STAMBERY  
 "C" Zoning  
 ADD.