

SCHOLFIELD - HATCHETT 3RD ADDITION

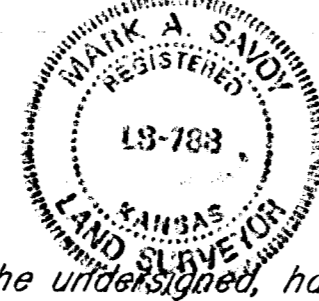
WICHITA, SEDGWICK COUNTY, KANSAS

State of Kansas) SS We, Baughman Company, P.A., Surveyors in
Sedgwick County) do hereby certify that we have surveyed
and platted "SCHOLFIELD-HATCHETT 3RD ADDITION", Wichita, Sedgwick
County, Kansas and that the accompanying plat is a true and cor-
rect exhibit of the property surveyed, described as and being a replat
of Lot 1, Scholfield-Hatchett Addition, Wichita, Kansas and Lot 6, ex-
cept the west 9 feet thereof and Lot 7 except the east 39 feet there-
of, Block 10, Eastridge Addition to Wichita, Kansas.

All being situated in the NW1/4 of Sec. 30, Twp. 27-S, R-2-E of
the 6th P.M., Sedgwick County, Kansas.

Baughman Company, P.A.

Date 22 Jul 1992



Mark A. Swoy Surveyor
Mark A. Swoy

Know all men by these presents that we,
the undersigned, have caused the land described in the surveyors cer-
tificate to be platted into a lot to be known as "SCHOLFIELD-HATCHETT
3RD ADDITION", Wichita, Sedgwick County, Kansas. The utility easement
is hereby granted as indicated for the construction and maintenance
of all public utilities. The contingent street dedication is hereby ded-
icated contingent upon the need for the right-of-way for any street
related purpose. This contingent dedication shall run with the land
and be binding on all future owners of Lot 1. Access Controls are
hereby granted as indicated on the face of the plat.

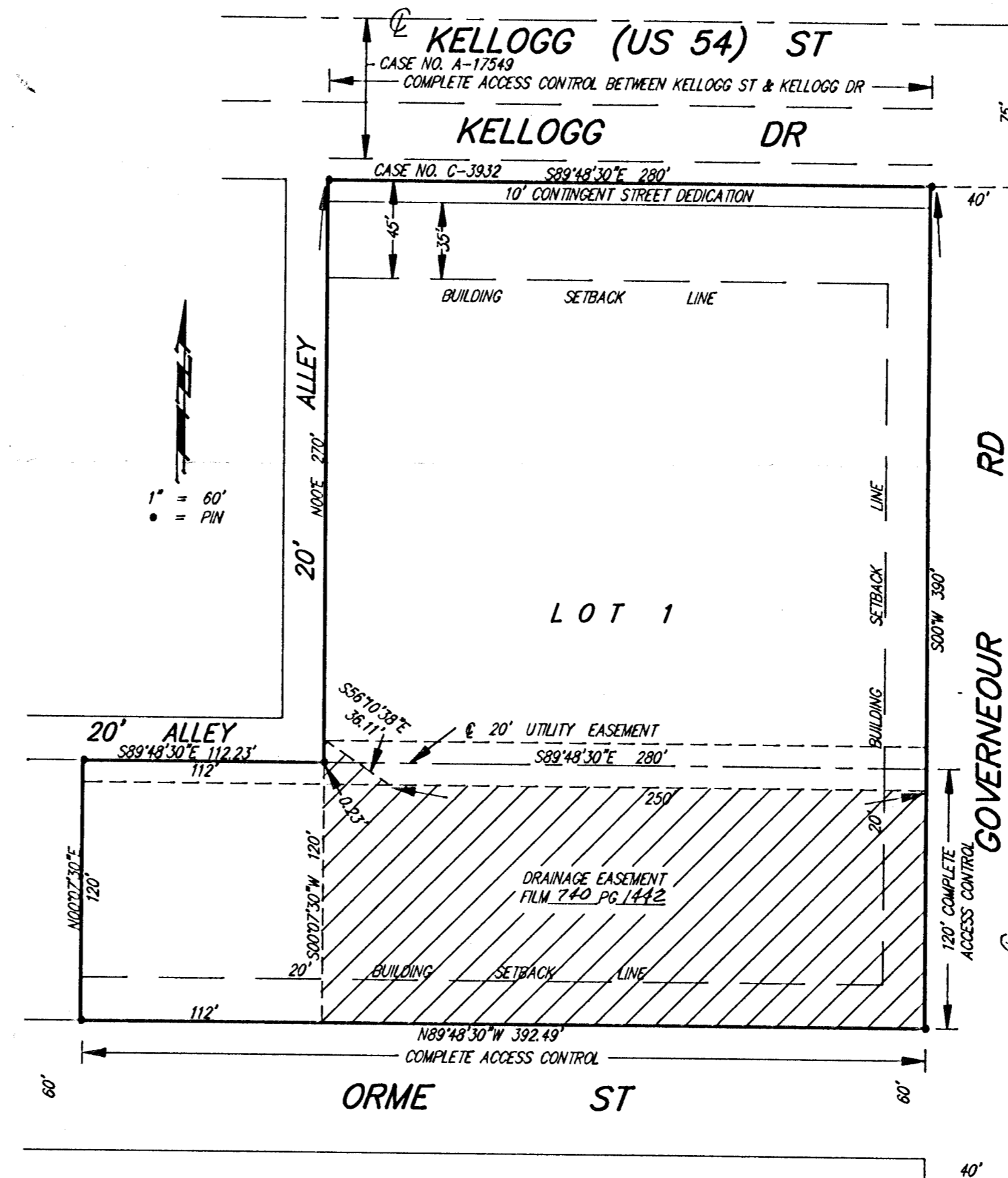
Scholfield-Hatchett, Partnership
Victor H. Scholfield Partner
Victor H. Scholfield
Steve A. Hatchett Partner
Steve A. Hatchett

Scholfield-Devlin-Hatchett, Partnership
Victor H. Scholfield Partner
Victor H. Scholfield
Steve A. Hatchett Partner
Steve A. Hatchett

Thomas R. Devlin Partner
Thomas R. Devlin
PRESIDENT, Devlin Auto Realty, Inc.

State of Kansas) SS The foregoing instrument acknowledged be-
Sedgwick County) fore me, this 22nd day of November 1992, by Victor H.
Scholfield and Steve A. Hatchett, partners of Scholfield-Hatchett,
Partnership and Victor H. Scholfield and Steve A. Hatchett and Thomas
R. Devlin, President of Devlin Auto Realty, Inc., a Kansas Corporation,
partners of Scholfield-Devlin-Hatchett, a Partnership on behalf of the
partnerships.

Kathy Dieker Notary Public
My App't. Exp. 10/12/94
Kathy Dieker



This plat of "SCHOLFIELD-HATCHETT 3RD
ADDITION", Wichita, Sedgwick County, Kansas, has been submitted to
and approved by the Wichita-Sedgwick County Metropolitan Area Plan-
ning Commission, Wichita, Kansas.
Dated this 4th day of June 1992.
Wichita-Sedgwick County Metropolitan Area Planning Commission.



Chairman
Christopher J. Gobel

Secretary
Marvin S. Krout

This plat approved and all dedications
shown hereon accepted by the City Council of the City of Wichita,
Kansas, this ____ day of ____ 1992.

Mayor
F.M. Ojile

Deputy City Clerk
Pat Burnett
Entered on transfer record this ____ day
of ____ 1992.

County Clerk
Don Wright

State of Kansas) SS This is to certify that this plat has been
Sedgwick County) filed for record in the office of the Register of Deeds, this ____ day
of ____ 1992, at ____ o'clock ____ M; and is duly record-
ed.

Register of Deeds
Pat Kettler

Deputy
Ed Resa