

M<sup>C</sup>ARTHUR

47TH ST. SO.

VICINITY MAP

1" = 1000'

TOPO MADE AUGUST, 1988

REVISED

SKETCH PLAT

SCOTT STUCKEY THIRD ADD.

FOR: SCOTT STUCKEY

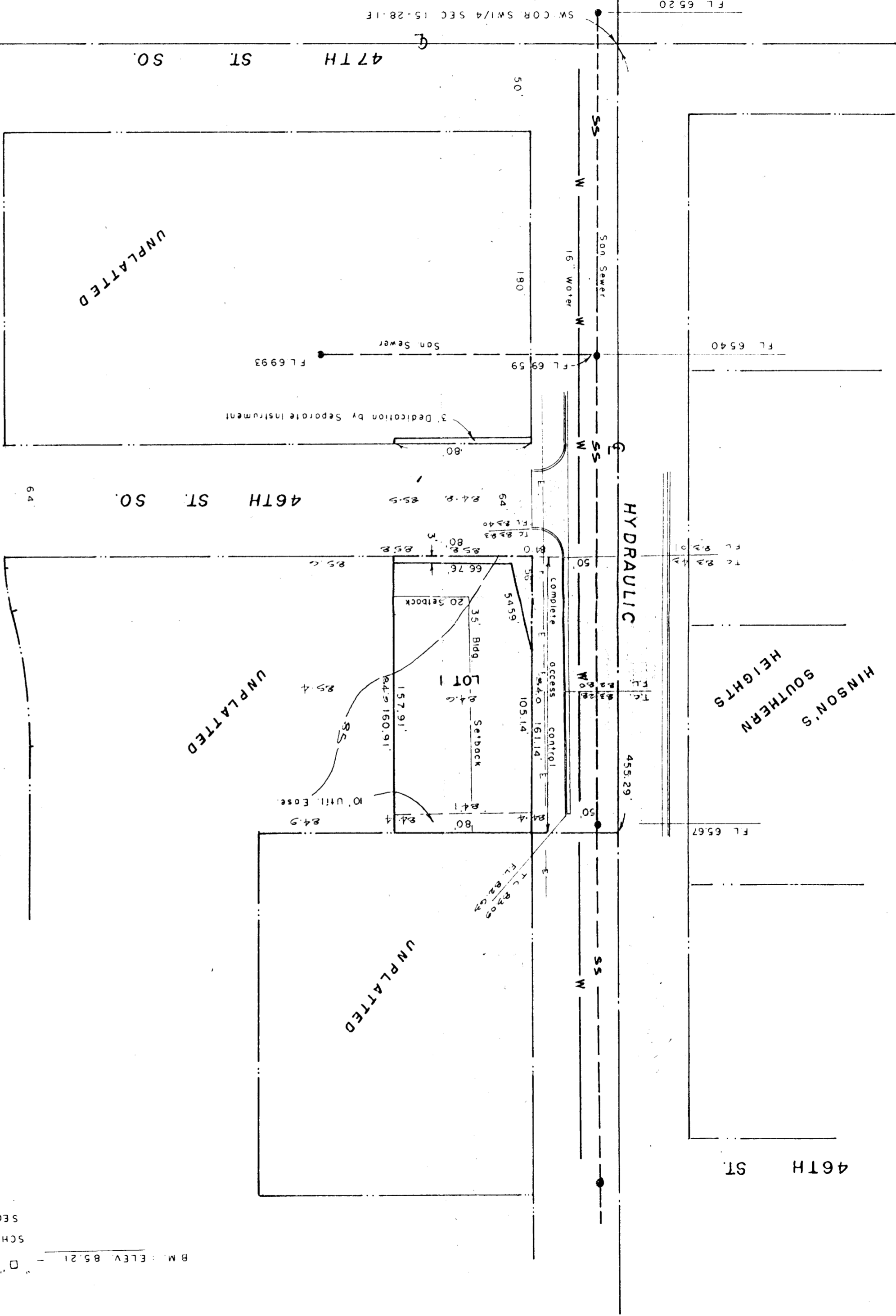
LOWELL D. HIGH, L.S.



1" = 50'

BM: ELEV. 85.21 - ON NE COR CONC. STEP OF RIVERSIDE  
 SCHOOL 46' W & 79' S. SW COR. SW 1/4  
 SEC. 15-28-1E

KANSAS



46TH ST

HINSON'S  
SOUTHERN  
HEIGHTS

HYDRAULIC

UNPLATTED

UNPLATTED

UNPLATTED

47TH ST. SO.

46TH ST. SO.

FL 65.20

FL 65.40

FL 69.59

FL 69.93

FL 65.67

455.29'

FL 82.02

FL 82.04

FL 82.02

FL 82.04

16" WATER

San Sewer

San Sewer

San Sewer

San Sewer

San Sewer

San Sewer

San Sewer

San Sewer

San Sewer

San Sewer

San Sewer

San Sewer