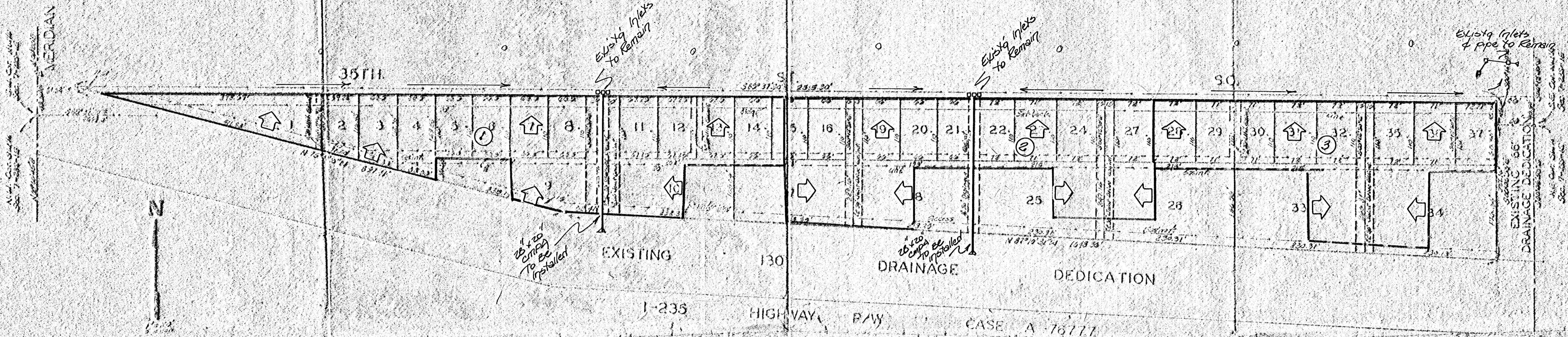


DRAINAGE PLAN

SCHRAFT 3RD. ADDITION

WICHITA, KANSAS



State of Kansas, ss. We, Caughman Company, P.L.S., Surveyors in and said county and state do hereby certify that we have surveyed and plotted "SCHRAFT 3RD. ADDITION", Wichita, Kansas and that the accompanying plat is a true and correct exhibit of the property surveyed, described as the south 1/2 of the NE 1/4 of Sec. 7, Twp. 23 S., R. 14 E. of the 6th P.M., Sedgwick County, Kansas, except the east 60 feet thereof together with that part of the 30' R.O.W. of said Sec. 7, lying north of a line 130 feet north of and parallel with the north right-of-way line of I-235 Highway as condensed in Case A-76777, except the east 60 feet thereof.

Caughman Company, P.L.S.

William L. Kester, Surveyor

State of Kansas, ss. This is to certify that this plat has been filed for record in the office of the Register of Deeds, this 10th day of _____, 19__ at _____ o'clock P.M. and is duly recorded.

John A. [Name], Register of Deeds

[Name], Deputy

Know all men by these presents that we, the undersigned, have caused the land described in the surveyors certificate to be platted into lots and a street to be known as "SCHRAFT 3RD. ADDITION", Wichita, Kansas. The drainage easements are hereby granted as indicated for drainage purposes. The utility easements are hereby granted as indicated for the construction and maintenance of all public utilities. The access/maintenance easement is hereby granted for access along the drainage dedication for maintenance purposes. The street is hereby dedicated to and for the use of the public.

Schraft Corporation

President

State of Kansas, ss. This foregoing instrument was acknowledged before me this _____ day of _____, 19__ by Wm. G. Schraft, president of Schraft Corporation.

My Comm. No. _____ Notary Public

This plat of "SCHRAFT 3RD. ADDITION", Wichita, Kansas, has been submitted to and approved by the Wichita-Sedgwick County Metropolitan Area Planning Commission, Wichita, Kansas.

Dated this _____ day of _____, 19__

Wichita-Sedgwick County Metropolitan Area Planning Commission

Chairman

Secretary

This plat approved and all dedications shown hereon accepted by the Board of Commissioners of the City of Wichita, Kansas, this _____ day of _____, 19__.

Mayor

City Clerk

This plat approved and all dedications shown hereon accepted by the Board of Commissioners of Sedgwick County, Kansas, this _____ day of _____, 19__.

Chairman

Commissioner

Commissioner

County Clerk

Entered on transfer record this _____ day of _____, 19__.

County Clerk