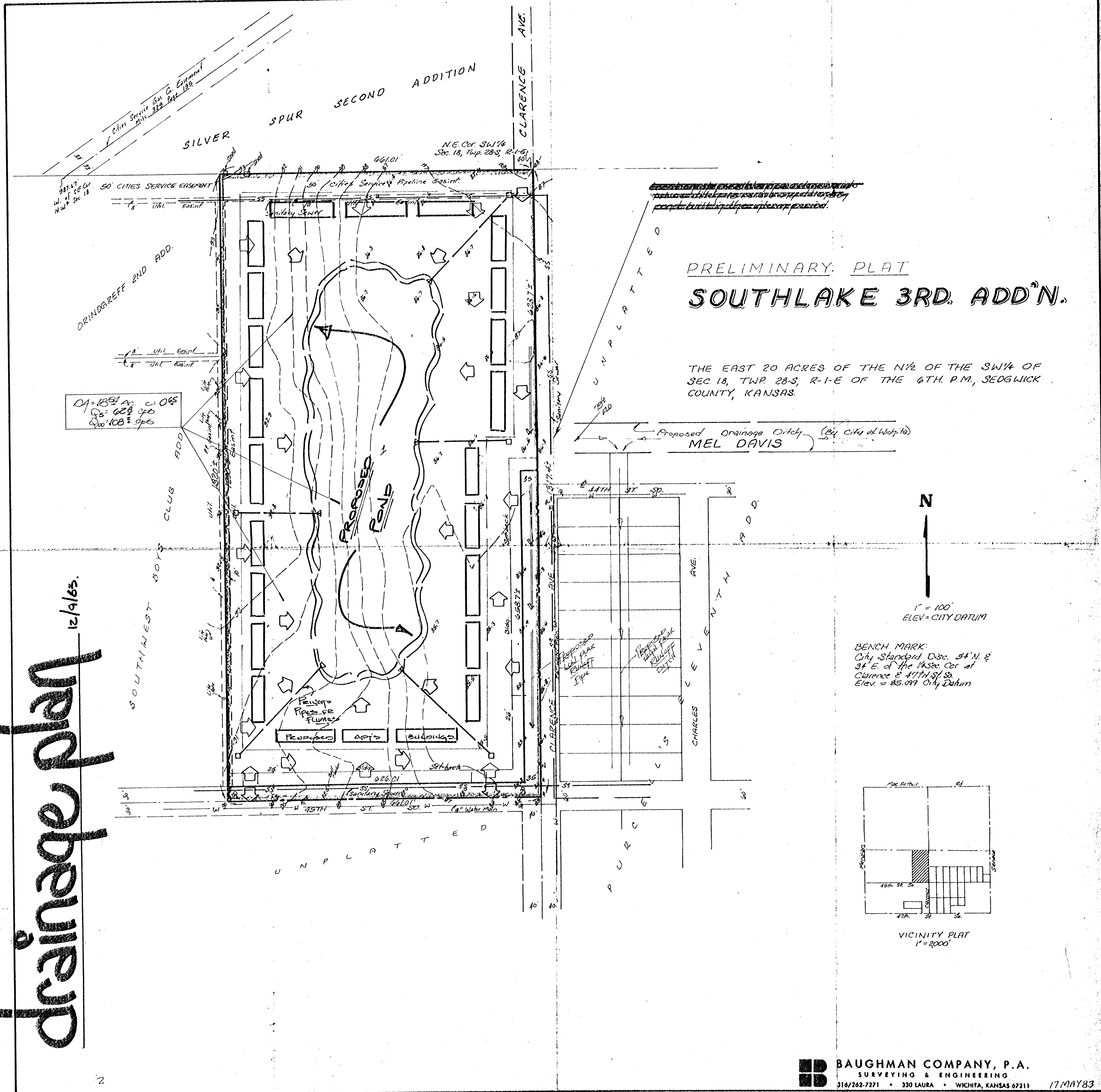


drainage plan 12/1/63.



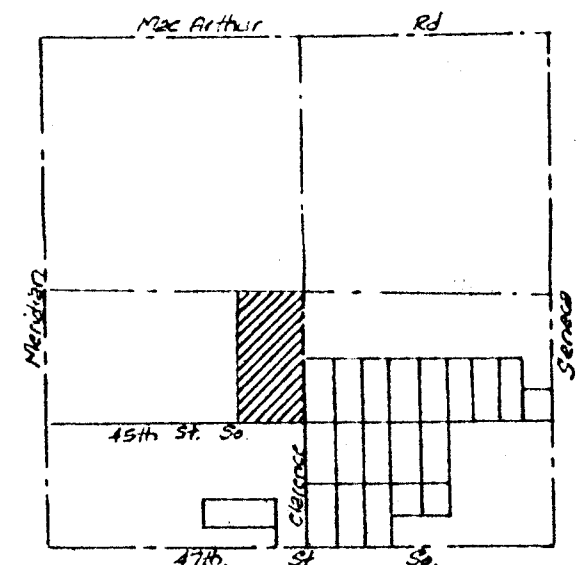
PRELIMINARY PLAT
SOUTHLAKE 3RD. ADD'N.

THE EAST 20 ACRES OF THE N¹/₂ OF THE SW¹/₄ OF SEC. 18, TWP. 28-S, R-1-E OF THE 6TH. P.M., SEDGWICK COUNTY, KANSAS.

Proposed Drainage Ditch (By City of Wichita)
MEL DAVIS

N
1" = 100'
ELEV = CITY DATUM

BENCH MARK:
City Standard Disc. 54" N. &
34" E. of the 14500. Cor. of
Clarence & 47th St. S.
Elev. = 85.099 City Datum



VICINITY PLAT
1" = 2000'