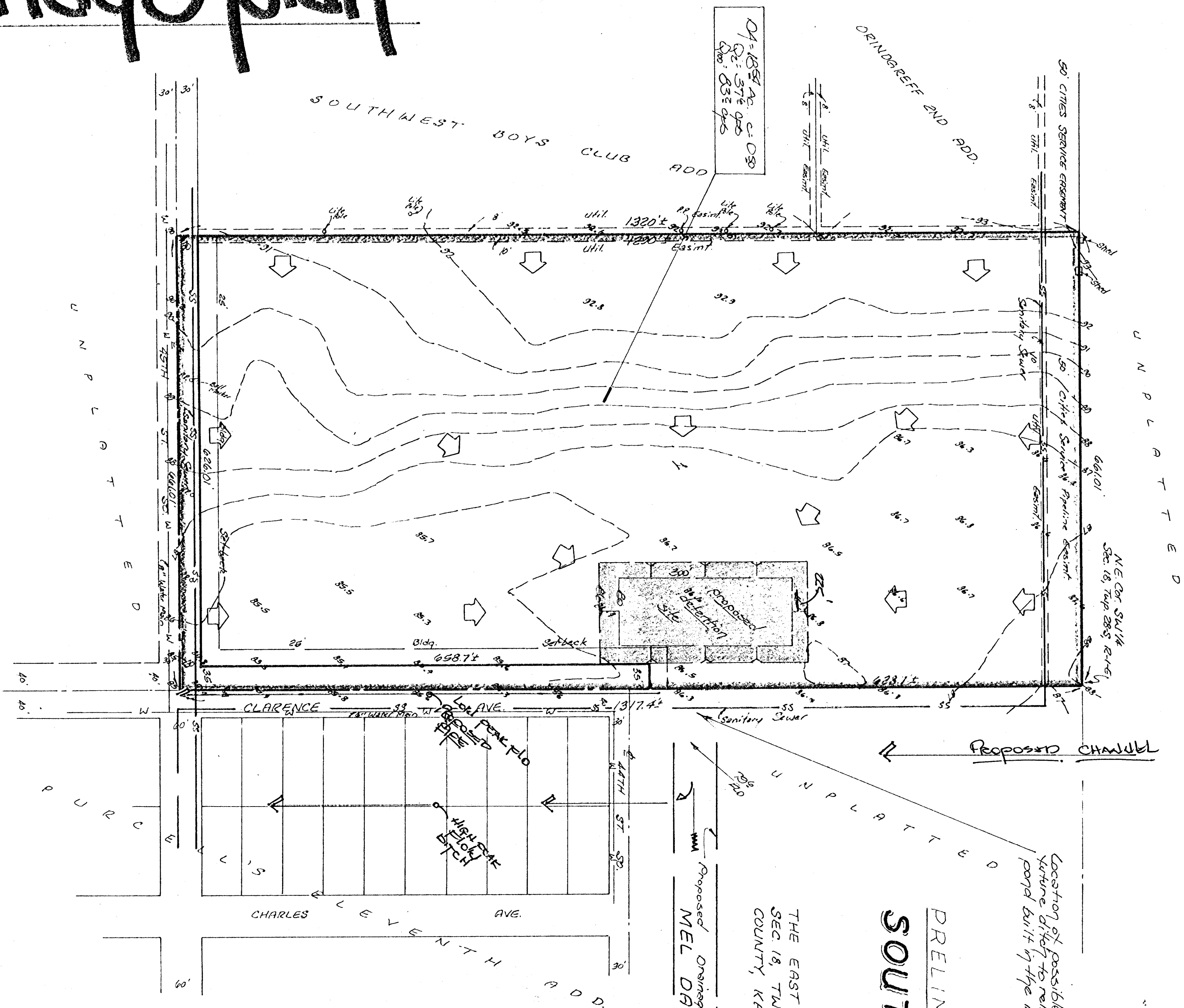


# drainage plan



Location of possible open expansion into  
 future ditch to receive any additional  
 pond built in the storm pond.

## PRELIMINARY PLAT SOUTHLAKE 3RD. ADD'N.

THE EAST 20 ACRES OF THE N1/4 OF THE SW1/4 OF  
 SEC. 18, TWP. 28-S, R-1-E OF THE 6TH. P.M., SEDGWICK  
 COUNTY, KANSAS

Proposed Drainage Ditch  
 MEL DAVIS

BENCH MARK:  
 City Standard D.M. #411, E  
 34 E. at 1st Ave. Cor. 2nd St.  
 Clarence E. 4477.01' S  
 Elev. = 85.679 City Datum

