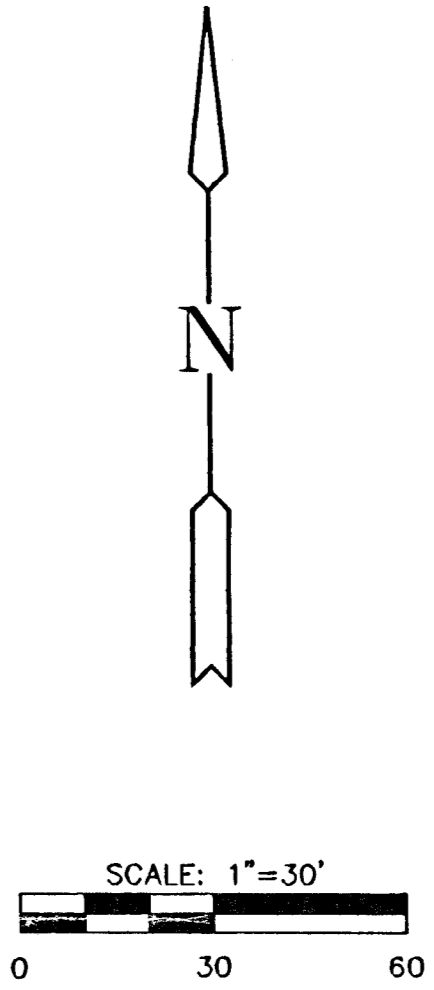
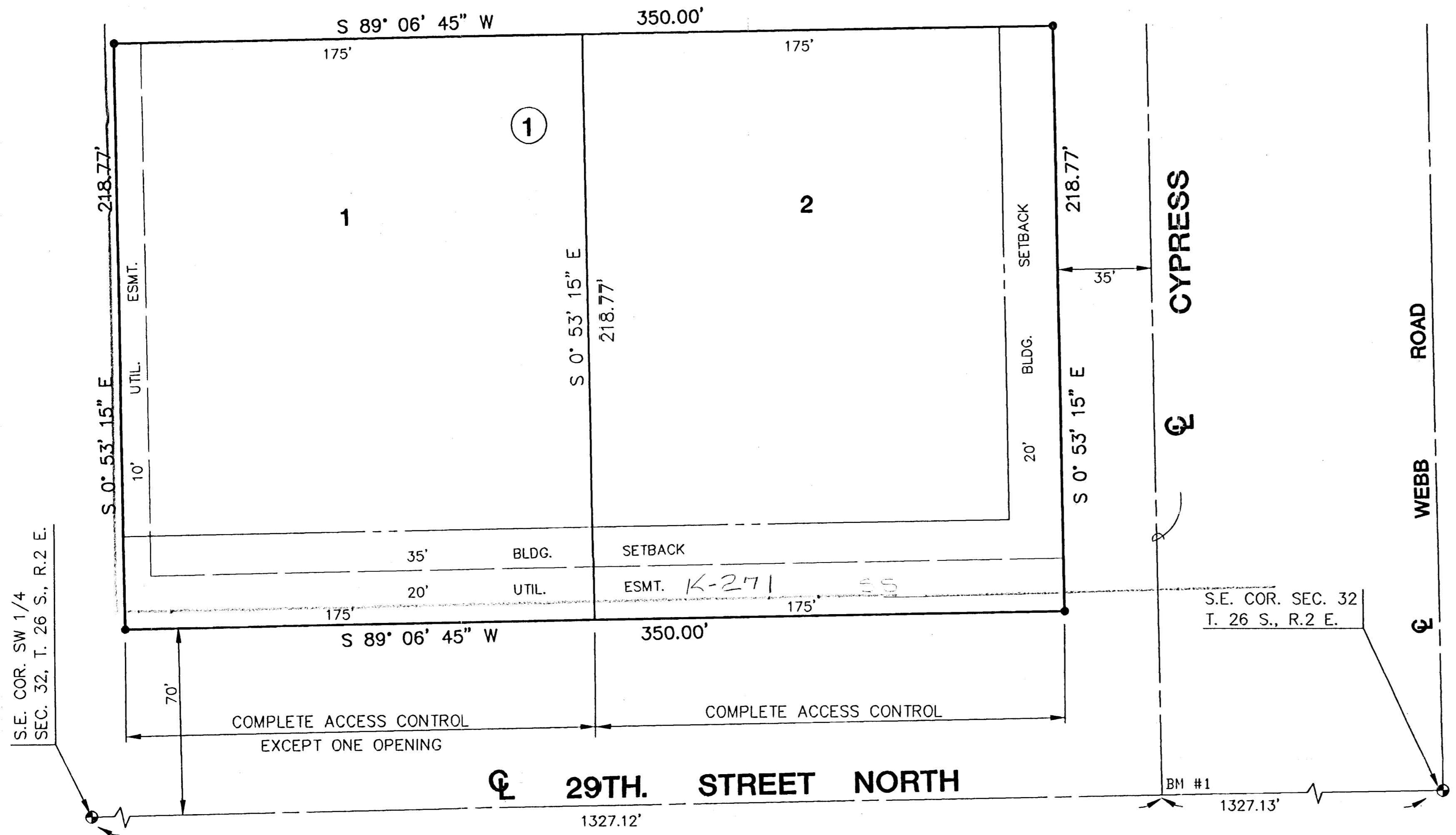


# FINAL PLAT MEDITERRANEAN DENTAL PLAZA ADDITION

AN ADDITION TO WICHITA, SEDGWICK COUNTY, KANSAS



I, Kenneth H. Bengtson, a Civil Engineer and Registered Land Surveyor in Kansas, do hereby certify that I have been in responsible charge of surveying and platting of "MEDITERRANEAN DENTAL PLAZA ADDITION", an addition to Wichita, Sedgwick County, Kansas, into lots and a block, the same being accurately set forth in the accompanying plat and described herein:

A replat of Lot 14, Block 1, Mediterranean Plaza, an addition to Wichita, Sedgwick County, Kansas.

All lots, blocks, easements, building setbacks lying within the above described property are hereby vacated and replatted by virtue of K.S.A. 12-512(b).

I hereby certify that the details of this plat are correct to the best of my knowledge and belief this \_\_\_\_\_ day of \_\_\_\_\_, 1997.

Kenneth H. Bengtson, P.E., R.L.S. #922  
Mid-Kansas Engineering Consultants, Inc.  
411 North Webb Road  
Wichita, KS 67206

Know all men by these presents that we the undersigned property owners of the lands as above set forth in the Civil Engineer's and Registered Land Surveyor's Certificate, have caused the same to be surveyed and platted into lot and block, the same to be known as "MEDITERRANEAN DENTAL PLAZA ADDITION" an addition to Wichita, Sedgwick County, Kansas. Easements for the construction and maintenance of public utilities and drainage as indicated on the accompanying plat are hereby granted.

All abutters rights to or from the North line of 29th Street North over and across the South line of Mediterranean Dental Plaza Addition, are hereby dedicated to the City of Wichita, except that Lot 1, Block 1 shall have access to 29th Street North at one location.

ANTHONY W. MARTIN, D.D.S., P.A.

ANTHONY W. MARTIN, D.D.S., PRESIDENT

STATE OF KANSAS )  
                          ) ss.  
SEDGWICK COUNTY)

BE IT REMEMBERED, that on this \_\_\_\_\_ day of \_\_\_\_\_, 1997, before me the undersigned, a Notary Public in and for the County and State aforesaid, came Anthony W. Martin, D.D.S., President, to me personally known to be the same person who executed the foregoing instrument of writing and duly acknowledged the execution of the same.

IN WITNESS WHEREOF, I have hereunto set my hand and affixed my official seal, the day and year last above written.

\_\_\_\_\_  
Notary Public  
My appointment expires:

This plat of "MEDITERRANEAN DENTAL PLAZA ADDITION", has been submitted to and approved by the Wichita-Sedgwick County Metropolitan Area Planning Commission, Wichita, Kansas.

Dated this \_\_\_\_\_ day of \_\_\_\_\_, 1997.

WICHITA-SEDGWICK COUNTY METROPOLITAN PLANNING COMMISSION

Richard Lopez \_\_\_\_\_, Chairman

Marvin S. Krout \_\_\_\_\_, Secretary

This plat approved and all dedications shown thereon, if any, accepted by the City Council of the City of Wichita, Kansas, this \_\_\_\_\_ day of \_\_\_\_\_, 1997.

Bob Knight \_\_\_\_\_, Mayor

Pat Burnett \_\_\_\_\_, City Clerk

Entered on transfer record this \_\_\_\_\_ day of \_\_\_\_\_, 1997.

James Alford \_\_\_\_\_, County Clerk

STATE OF KANSAS )  
                          ) ss:  
SEDGWICK COUNTY)

This is to certify that this instrument was filed for record in the Register of Deeds office this \_\_\_\_\_ day of \_\_\_\_\_, 1997.

Larry Consolver \_\_\_\_\_, Register of Deeds

Michael D. Hurtt \_\_\_\_\_, Deputy