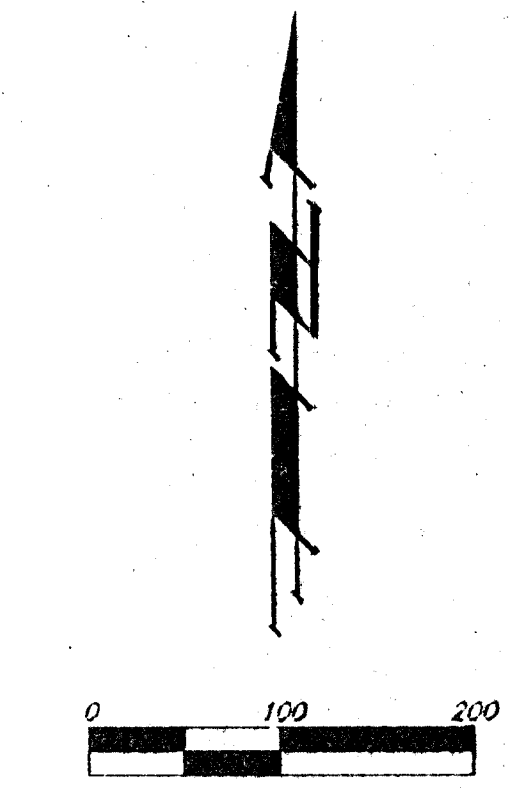
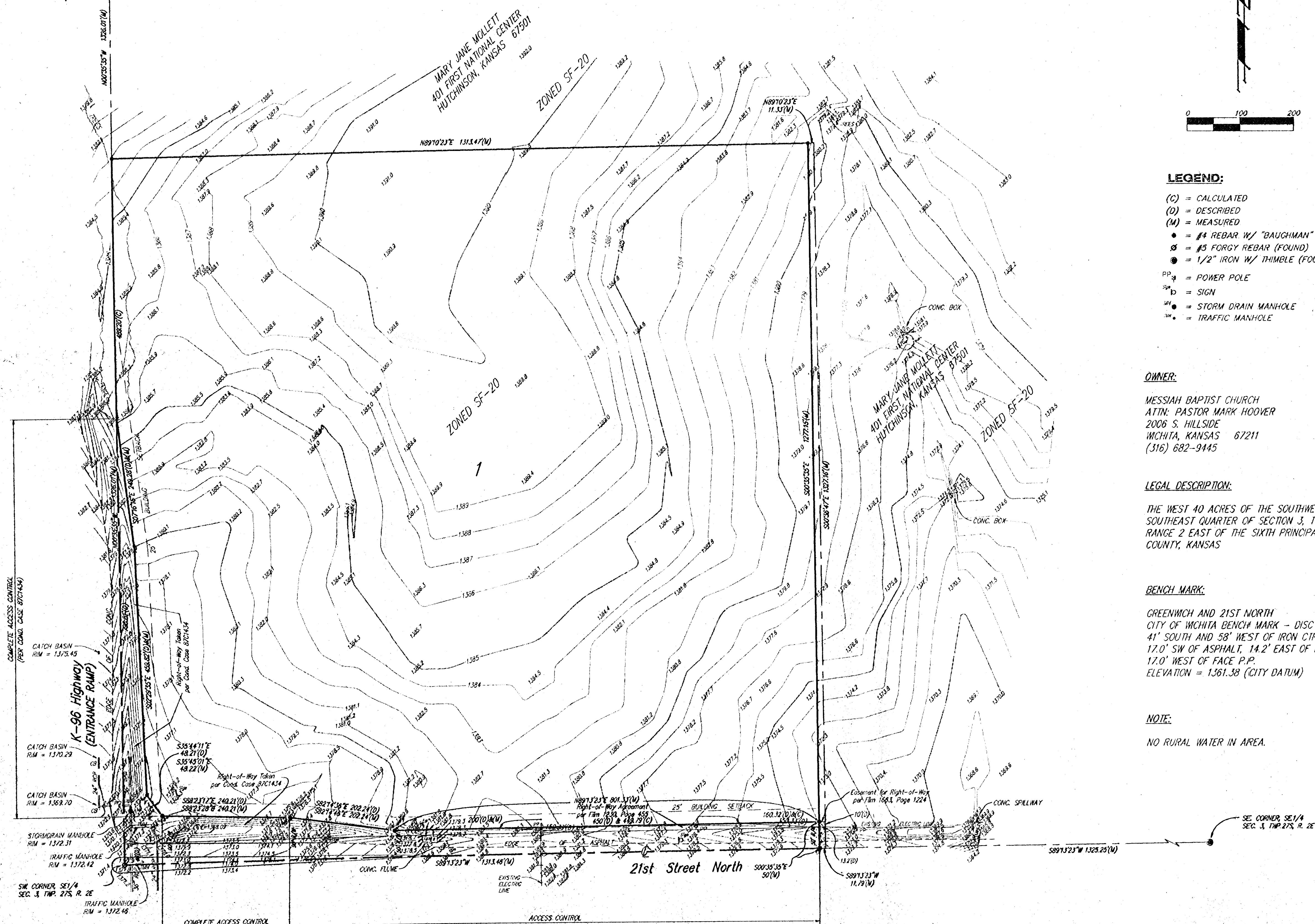


# PRELIMINARY PLAT

## MESSIAH BAPTIST CHURCH ADDITION

### SEDGWICK COUNTY, KANSAS

NW CORNER SE 1/4  
SEC. 3, TWP. 27S, R. 2E



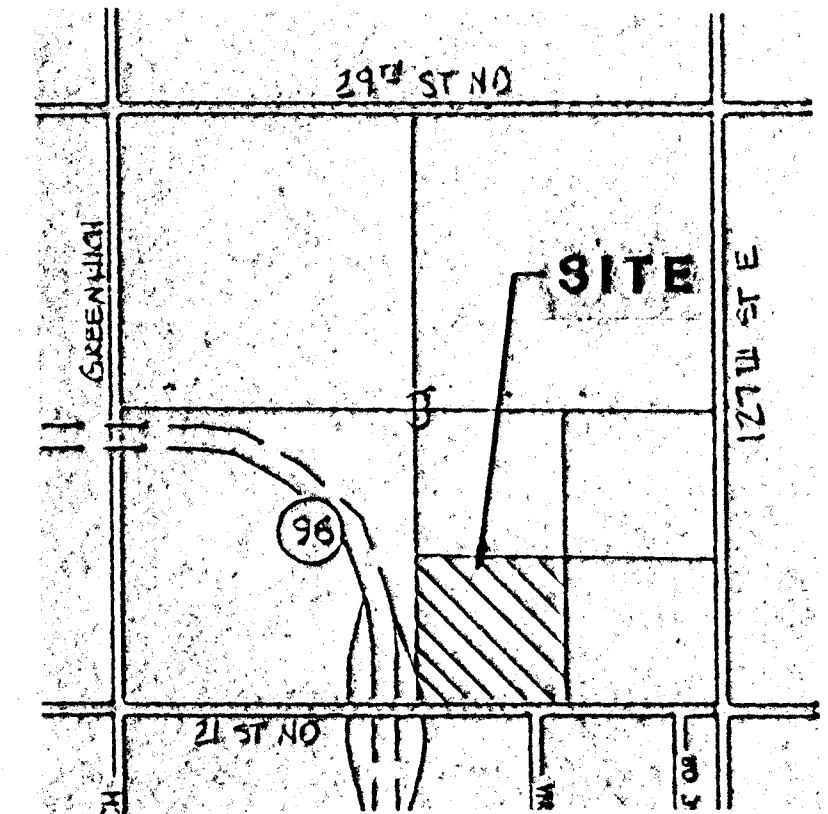
- LEGEND:**
- (C) = CALCULATED
  - (D) = DESCRIBED
  - (M) = MEASURED
  - = #4 REBAR W/ "BAUGHMAN" CAP (SET)
  - ⊗ = #5 FORGY REBAR (FOUND)
  - = 1/2" IRON W/ THIMBLE (FOUND)
  - PP = POWER POLE
  - SP = SIGN
  - SM = STORM DRAIN MANHOLE
  - TM = TRAFFIC MANHOLE

**OWNER:**  
MESSIAH BAPTIST CHURCH  
ATTN: PASTOR MARK HOOVER  
2006 S. HILLSIDE  
WICHITA, KANSAS 67211  
(316) 682-9445

**LEGAL DESCRIPTION:**  
THE WEST 40 ACRES OF THE SOUTHWEST QUARTER OF THE SOUTHEAST QUARTER OF SECTION 3, TOWNSHIP 26 SOUTH, RANGE 2 EAST OF THE SIXTH PRINCIPAL MERIDIAN, SEDGWICK COUNTY, KANSAS

**BENCH MARK:**  
GREENWICH AND 21ST NORTH  
CITY OF WICHITA BENCH MARK - DISC  
41' SOUTH AND 58' WEST OF IRON CTR LINE BOTH  
17.0' SW OF ASPHALT, 14.2' EAST OF FACE P.P.  
17.0' WEST OF FACE P.P.  
ELEVATION = 1361.38 (CITY DATUM)

**NOTE:**  
NO RURAL WATER IN AREA.



**VICINITY MAP**

29 MARCH 1997

**BAUGHMAN COMPANY P. A.**  
ENGINEERING, SURVEYING, & PLANNING  
(316)-282-7271 • 315 ELLIS • WICHITA, KANSAS 67211  
P:\ENTRANCE\SEDP0004