

DRAINAGE CONCEPT

MESSIAH BAPTIST CHURCH ADDITION

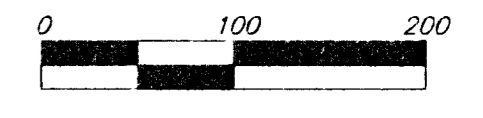
SEDGWICK COUNTY, KANSAS

NW CORNER SE 1/4
SEC. 3, TWP. 27S, R. 2E

Existing Conditions	Existing Conditions
Area = 3.3 acres	Area = 3.3 acres
Impervious Area = 0 acres	Impervious Area = 0.5 acres
Tc = 15 min.	Tc = 15 min.
C _s = 0.40	C _s = 0.48
Q ₁ = 5.1 cfs	Q ₁ = 6.1 cfs
Q ₁₀ = 6.9 cfs	Q ₁₀ = 8.1 cfs
Q ₁₀₀ = 9.7 cfs	Q ₁₀₀ = 11.7 cfs

Existing Conditions	Existing Conditions
Area = 15.1 acres	Area = 15.1 acres
Impervious Area = 0 acres	Impervious Area = 5 acres
Tc = 25 min.	Tc = 25 min.
C _s = 0.40	C _s = 0.56
Q ₁ = 17.9 cfs	Q ₁ = 25.0 cfs
Q ₁₀ = 24.9 cfs	Q ₁₀ = 34.9 cfs
Q ₁₀₀ = 35.6 cfs	Q ₁₀₀ = 49.9 cfs

Existing Conditions	Existing Conditions
Area = 19.7 acres	Area = 19.7 acres
Impervious Area = 0 acres	Impervious Area = 7 acres
Tc = 25 min.	Tc = 20 min.
C _s = 0.40	C _s = 0.40
Q ₁ = 23.3 cfs	Q ₁ = 47.2 cfs
Q ₁₀ = 32.5 cfs	Q ₁₀ = 65.2 cfs
Q ₁₀₀ = 46.5 cfs	Q ₁₀₀ = 92.6 cfs



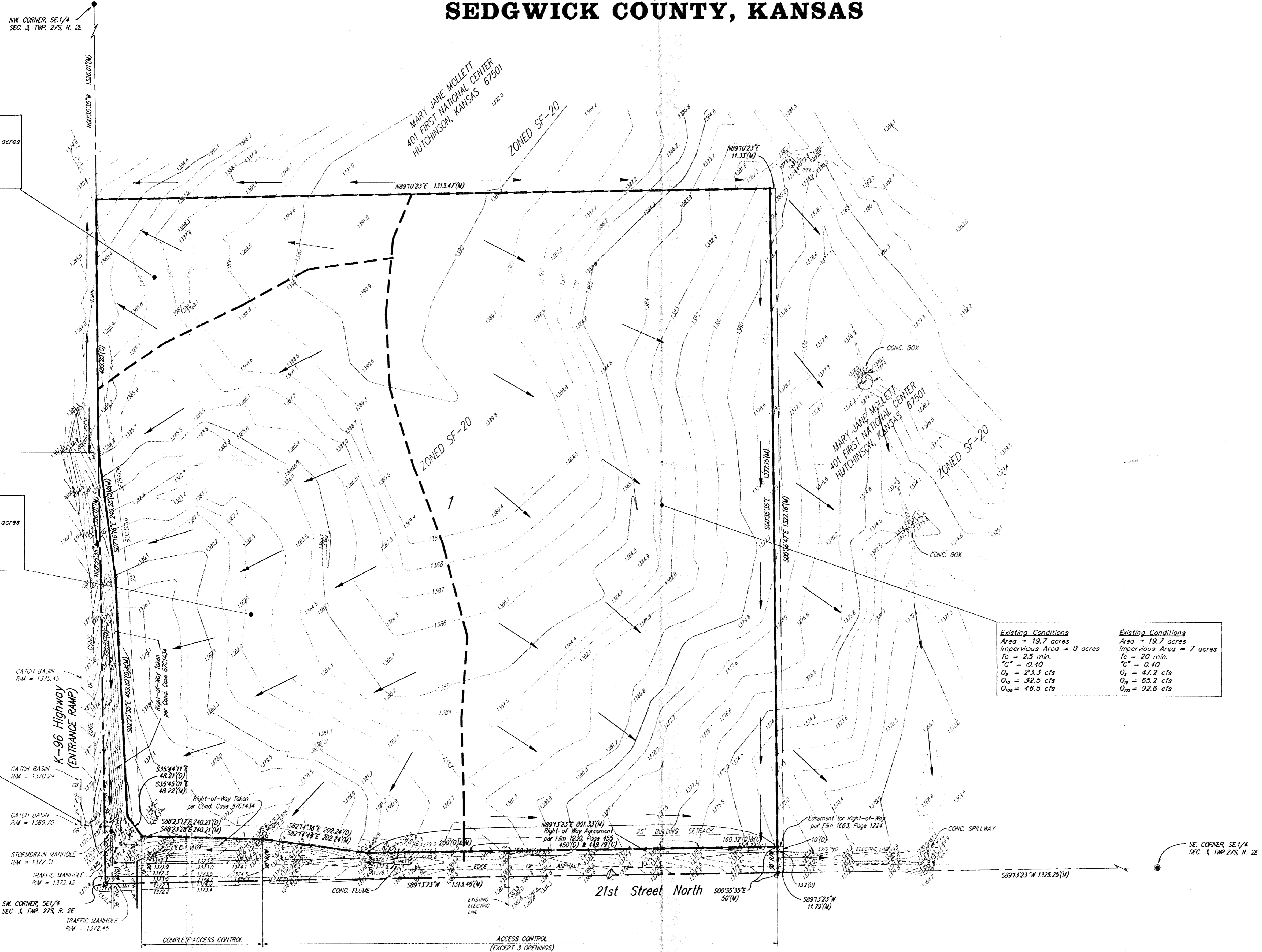
- LEGEND:**
- (C) = CALCULATED
 - (D) = DESCRIBED
 - (M) = MEASURED
 - = #4 REBAR W/ "BAUGHMAN" CAP (SET)
 - ⊙ = #5 FORGY REBAR (FOUND)
 - ⦿ = 1/2" IRON W/ THIMBLE (FOUND)
 - PP = POWER POLE
 - SP = SIGN
 - SM = STORM DRAIN MANHOLE
 - TM = TRAFFIC MANHOLE

OWNER:
MESSIAH BAPTIST CHURCH
ATTN: PASTOR MARK HOOVER
2006 S. HILLSIDE
WICHITA, KANSAS 67211
(316) 682-9445

LEGAL DESCRIPTION:
THE WEST 40 ACRES OF THE SOUTHWEST QUARTER OF THE
SOUTHEAST QUARTER OF SECTION 3, TOWNSHIP 26 SOUTH,
RANGE 2 EAST OF THE SIXTH PRINCIPAL MERIDIAN, SEDGWICK
COUNTY, KANSAS

BENCH MARK:
GREENWICH AND 21ST NORTH
CITY OF WICHITA BENCH MARK - DISC
41' SOUTH AND 58' WEST OF IRON CTR LINE BOTH
17.0' SW OF ASPHALT, 14.2' EAST OF FACE P.P.
17.0' WEST OF FACE P.P.
ELEVATION = 1361.58 (CITY DATUM)

NOTE:
NO RURAL WATER IN AREA.



System Capacity
65 cfs