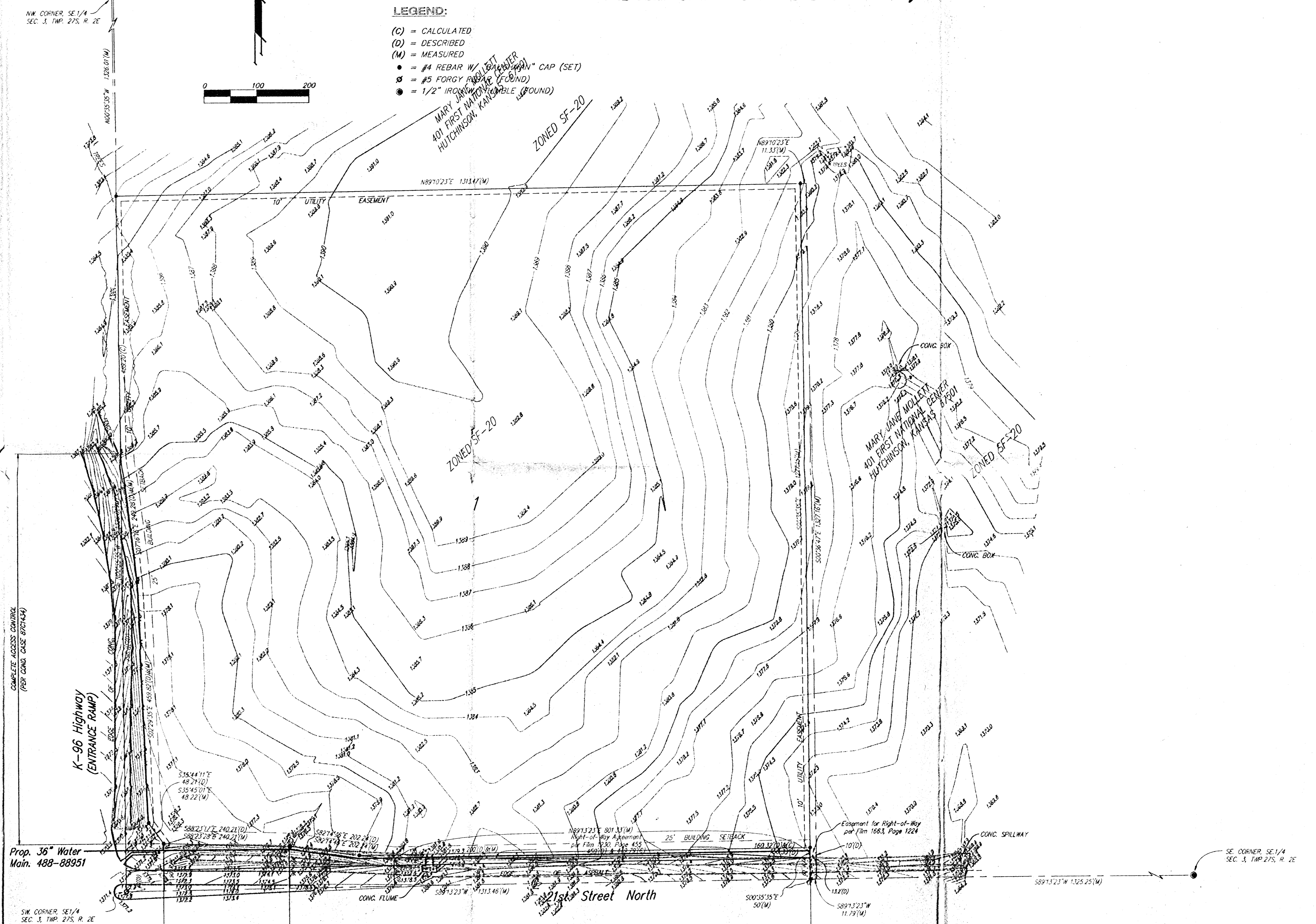


UTILITY PLAN

MESSIAH BAPTIST CHURCH 4th ADDITION

SEDGWICK COUNTY, KANSAS



- LEGEND:**
- (C) = CALCULATED
 - (D) = DESCRIBED
 - (M) = MEASURED
 - = #4 REBAR W/ 1/2" IRON PIPE (SET)
 - = #5 FORGY PIPE (FOUND)
 - = 1/2" IRON PIPE (FOUND)

Gravity Sanitary Sewer to be extended from the SE Corner of Lot 1, Kensington Gardens.

Prop. 8" S₁ Main
FL = 172.50

ACCESS CONTROL (EXCEPT 3 OPENINGS)

23 MAY 1997

BAUGHMAN COMPANY P. A.
ENGINEERING, SURVEYING, & PLANNING
(316)-282-7271 • 315 ELLIS • WICHITA, KANSAS 67211
F:\M\MESSIAH.DWG