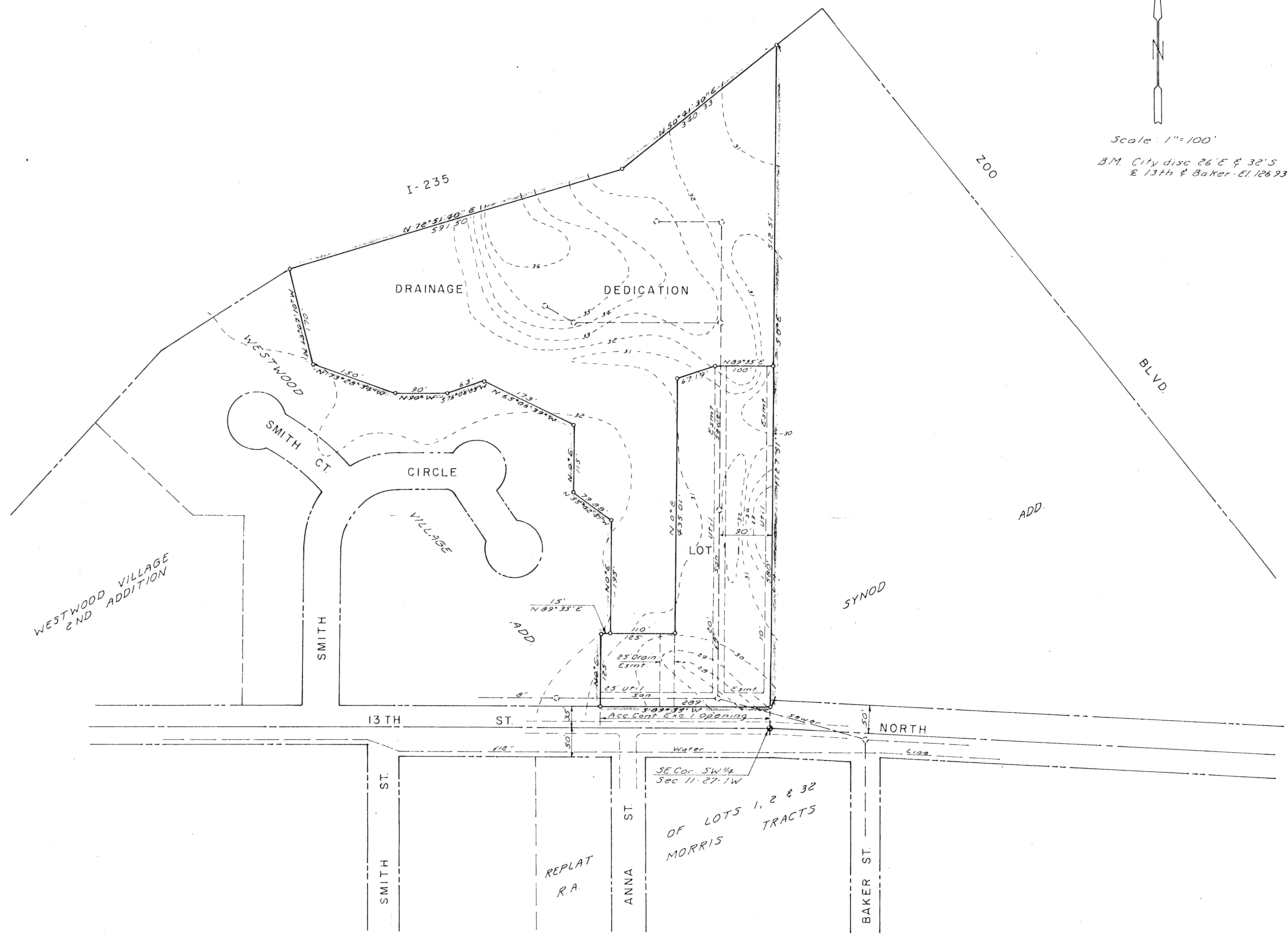




Scale: 1" = 100'
 B.M. City disc 26 E & 32 S
 & 13th & Baker - El. 126.93



SKETCH PLAT
WESTWOOD VILLAGE 3RD ADDITION

A REPLAT OF LOTS 1 THRU 7 & 14, BLK. 2, THE RESERVE & ANNA CIR. & CT. BEING VACATED, ALL IN WESTWOOD VILLAGE ADD.

Oct. 19, 1981