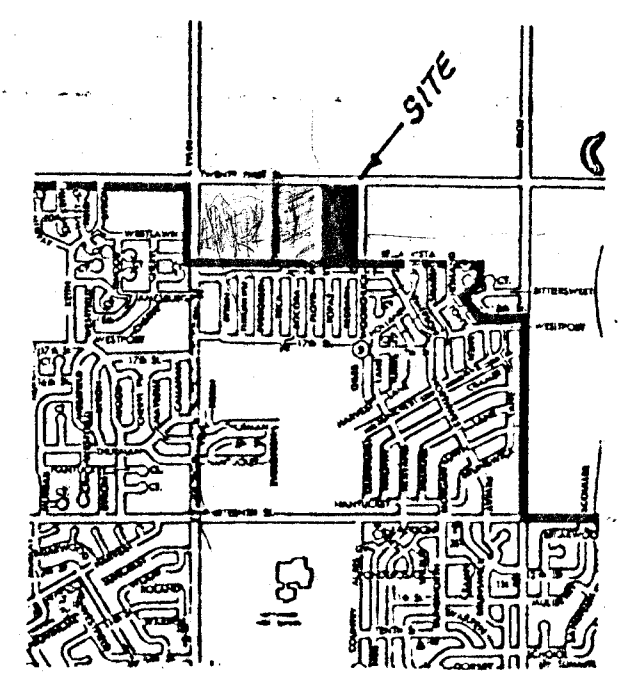
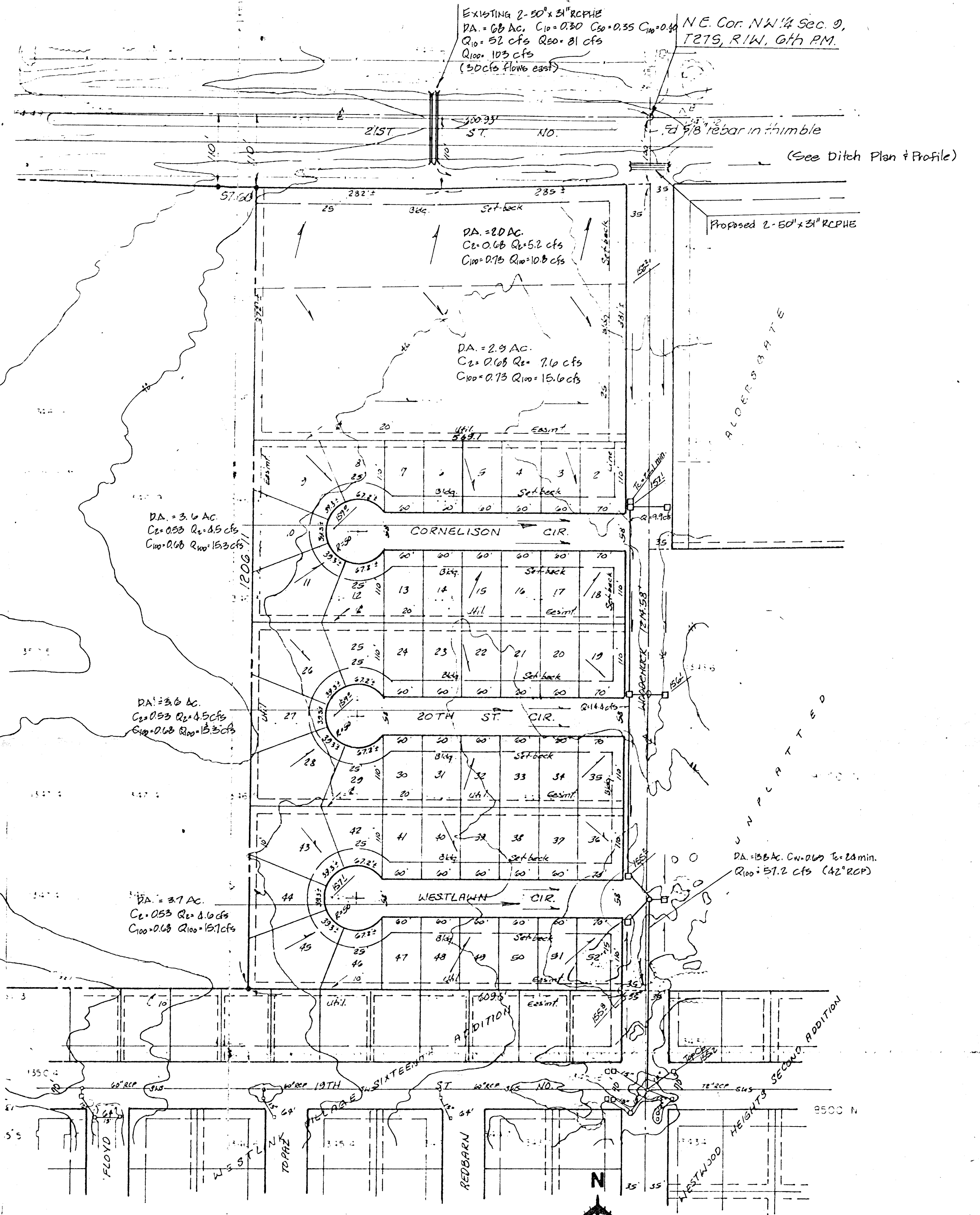


PRELIMINARY PLAT

WESTWIND ADDITION

PART OF THE NW 1/4 OF SEC 9 TWP 27-S
R-1-W SEDGWICK COUNTY KANSAS

WESTWIND ASSOCIATES II



Bench Mark Disc. 38 ft west
of 90 ft south intersection
centerlines Tyler Rd. & 21st St.
Elev = 1357.340 m.s.l.

ASSUMED AZIMUTH

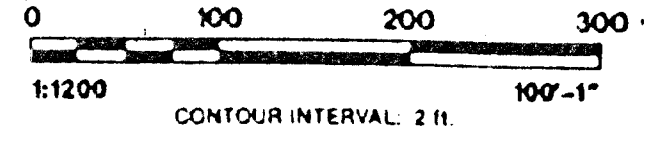
TOPOGRAPHIC MAP OF LANDS LOCATED AT
N. HALF OF N.W. QUARTER SECTION 8, 27S, 11W,
SEDGWICK COUNTY, KANSAS

SURVEYING & ENGINEERING
PROFESSIONAL ENGINEERING CONSULTANTS, P.A.
1440 EAST ENGLISH ST., WICHITA, KS 67211

PHOTOGRAMMETRY BY
MILES AIR PHOTO SURVEY
221 THURSTON STREET
MANHATTAN, KANSAS 66502
1963-308 FILE W 220 P 108

AERIAL PHOTOGRAPHY
TYPE VERTICAL AIRBORNE
ALTITUDE 3,000 A.M.S.L.
GATES OBTAINED 22 MAR 1968

DRAINAGE PLAN
November 21, 1988



4-22-80

BAUGHMAN COMPANY, P.A.
SURVEYING & ENGINEERING
316-262-7271 • 330 LAURA • WICHITA, KANSAS 67211

29 MAY 86