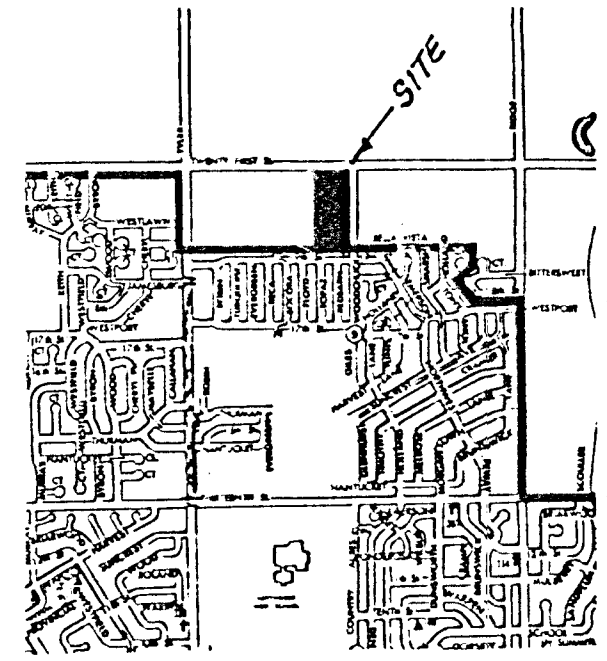
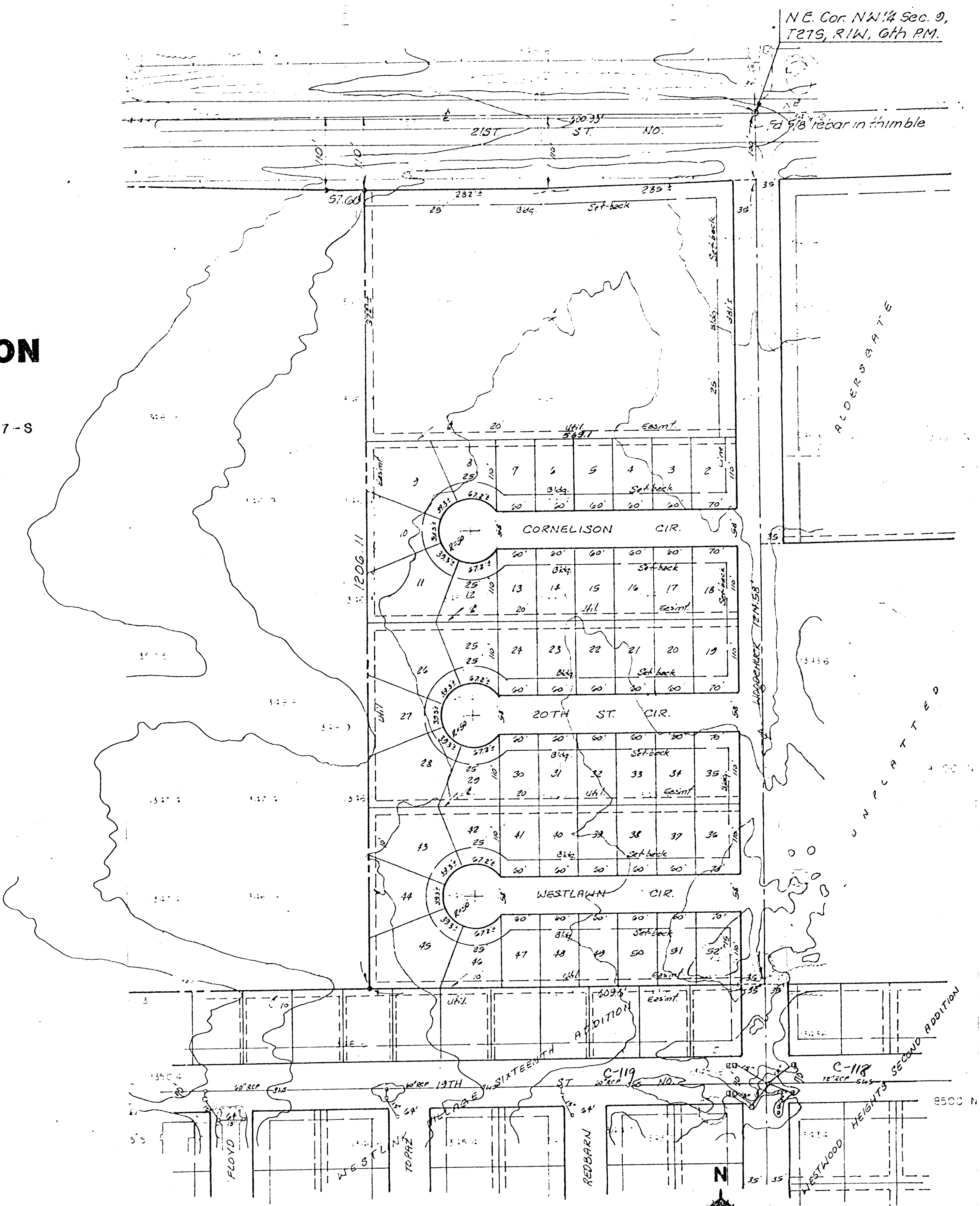


N.E. Cor. NW 1/4 Sec. 9,
T27S, R1W, 6th P.M.

PRELIMINARY PLAT WESTWIND ADDITION

PART OF THE NW 1/4 OF SEC 9 TWP 27-S
R-1-W SEDGWICK COUNTY KANSAS

WESTWIND ASSOCIATES II



VICINITY PLAT

Bench Mark Disc. 38 ft west
& 90 ft south intersection
centerlines Tyler Rd. & 21st St
Elev = 1357.340 m.g.l.

ASSUMED AZIMUTH

TOPOGRAPHIC MAP OF LANDS LOCATED AT
N. HALF OF N.W. QUARTER SECTION 9, T27S, R1W,
SEDGWICK COUNTY, KANSAS

SURVEYING & ENGINEERING
PROFESSIONAL ENGINEERING CONSULTANTS, P.A.
1440 EAST ENGLISH ST., WICHITA, KS 67211

0 100 200 300
1:1200 100'-1"

CONTOUR INTERVAL: 2 ft.

PHOTOGRAMMETRY BY
MILES AIR PHOTO SURVEY
121 THURSTON STREET
MANHATTAN, KANSAS 66502
903-539-3700 FILE # 208 P-108

AERIAL PHOTOGRAPHY
TYPE VERTICAL AT 80% OIL
ALTITUDE 3,000 A.M.G.L.
DATES OBTAINED 22 MAR 58

4-22-86