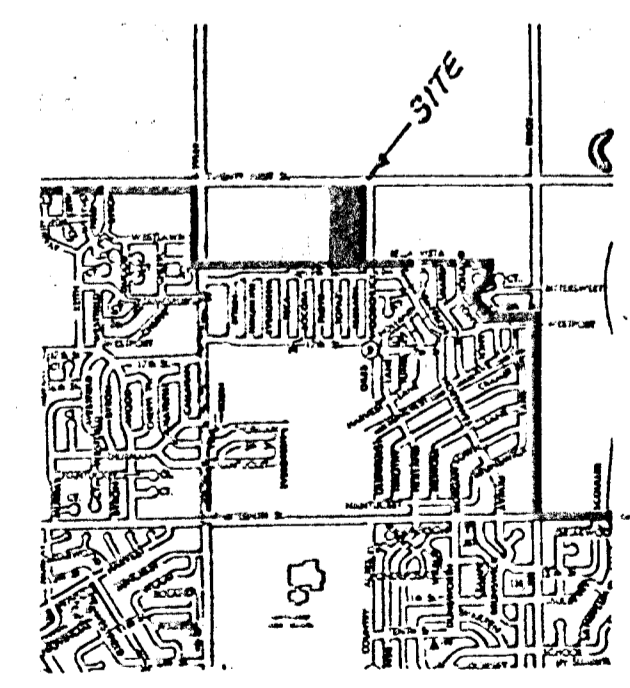
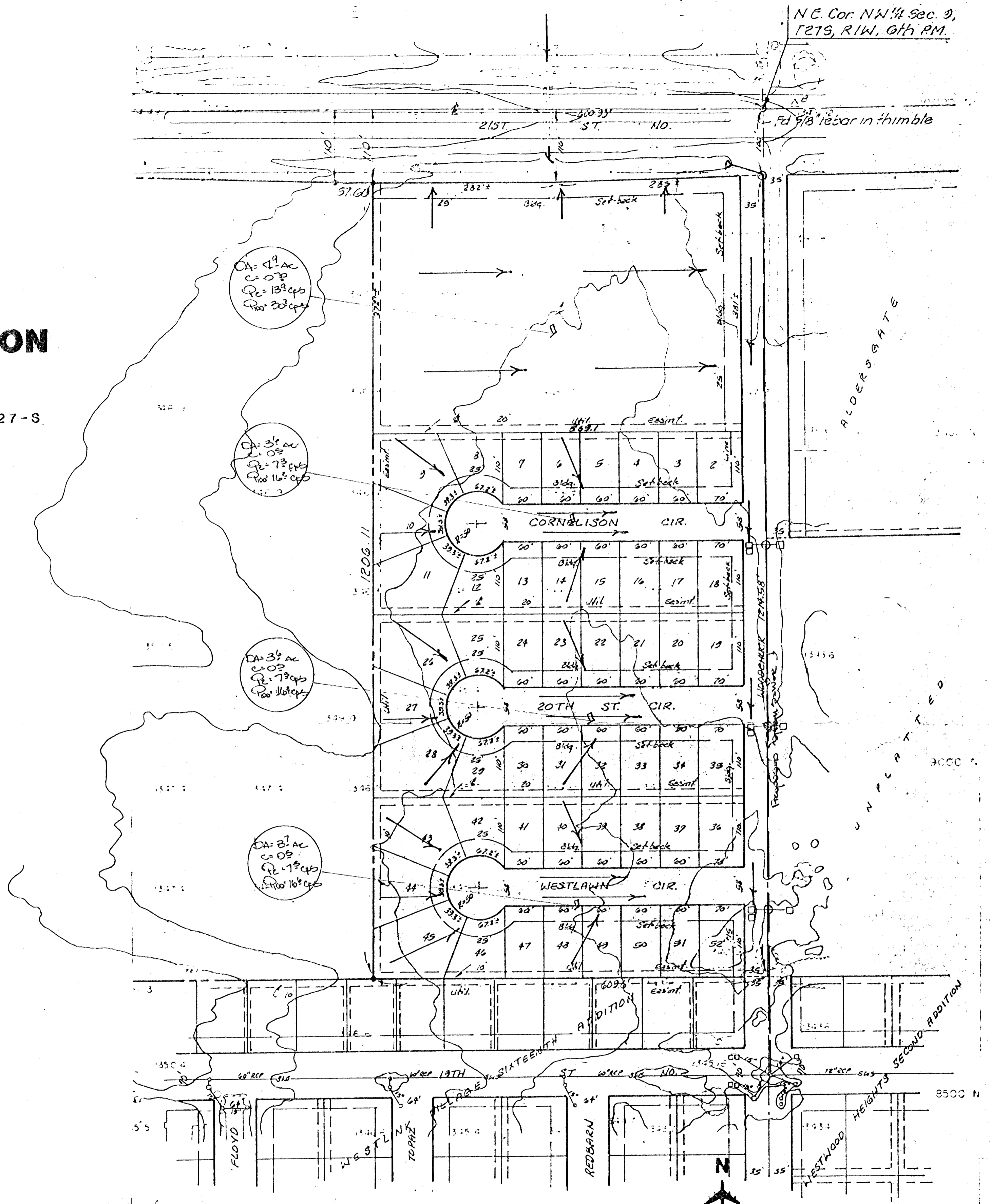


N.E. Cor. NW 1/4 Sec. 9,  
T27S, R1W, 6th PM.

PRELIMINARY PLAT  
**WESTWIND ADDITION**

PART OF THE NW 1/4 OF SEC 9 TWP 27-S,  
R-1-W SEDGWICK COUNTY KANSAS

WESTWIND ASSOCIATES II



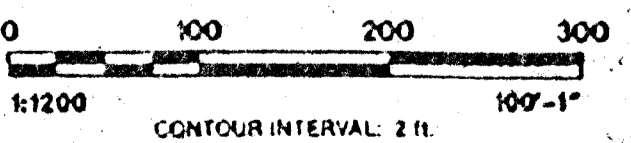
VICINITY PLAT

**GENERAL NOTES**  
 The residential lots in this plat will drain east as indicated by the cul-de-sacs. The church lot to the north of the three cul-de-sacs will drain basically east with some portions draining to 21st St. No. The runoff from these areas will be intercepted by Woodchuck which will drain south also, to 19th St.  
 Existing storm sewers in 19th St. will be extended to the north in Woodchuck and will drain also the ditch area within 21st St. No. which receives discharge from areas to the north of 21st St.  
 The average runoff factor for the residential lots is considered to be 0.59. Storm sewer pipes are indicated at the proposed locations in Woodchuck. Storm sewer pipe calculations, sizes and routing will be finalized at the time of the final plat.

Bench Mark Disc. 38 ft west  
& 90 ft south intersection  
centerlines Tyler Rd. & 21st St.  
Elev = 1357.340 m.g.l.

TOPOGRAPHIC MAP OF LANDS LOCATED AT  
N. HALF OF N.W. QUARTER SECTION 9, 27S.1W,  
SEDGWICK COUNTY, KANSAS

SURVEYING & ENGINEERING  
PROFESSIONAL ENGINEERING CONSULTANTS, P.A.  
1410 EAST ENGLISH ST., WICHITA, KS 67211



PHOTOGRAPHER BY  
MILES AIR PHOTO SURVEY  
127 PARSON STREET  
MANHATTAN, KANSAS 66506  
28 JAN 1978 FILE # 28 108

AERIAL PHOTOGRAPHY  
TYPE VERTICAL AT 90% OR  
ALTITUDE 1,300 ± M.S.L.  
DATES OBTAINED 22 MAR 1968

**DRAINAGE CONCEPT**

**BAUGHMAN COMPANY, P.A.**  
SURVEYING & ENGINEERING

316-262-7271 • 330 LAURA • WICHITA, KANSAS 67211

29 MAY 80