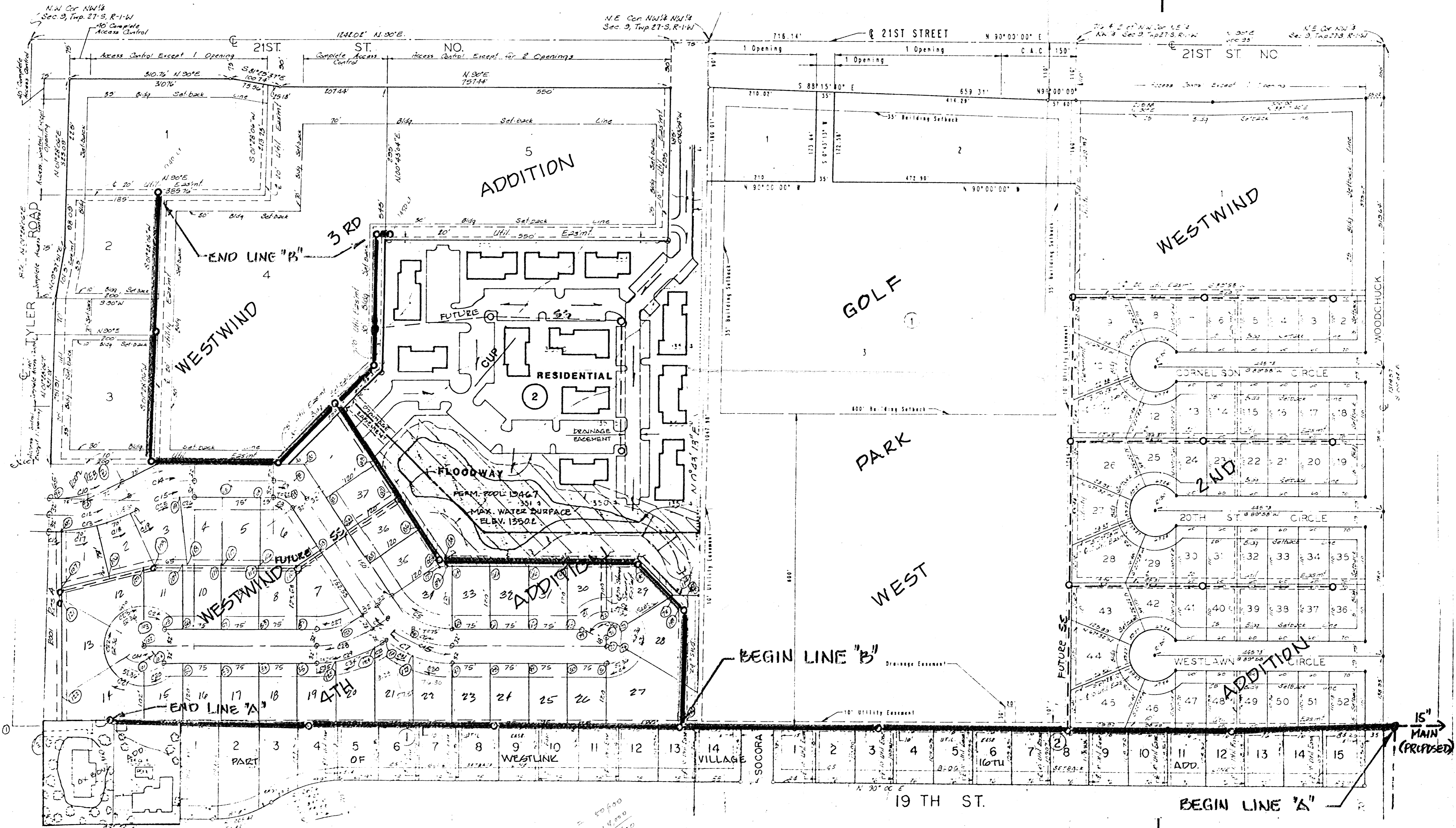


PREL. SANITARY SEWER LAYOUT WESTWIND 3RD ADDITION

WICHITA, KANSAS



$25,300 \times 20 = 506,000$
 $7 \times 2000 = 14,000$
 $14,000 \times 1.28 = 17,920$
 $506,000 + 17,920 = 523,920$
 $(523,920 \times 1.28) = 670,617.6$