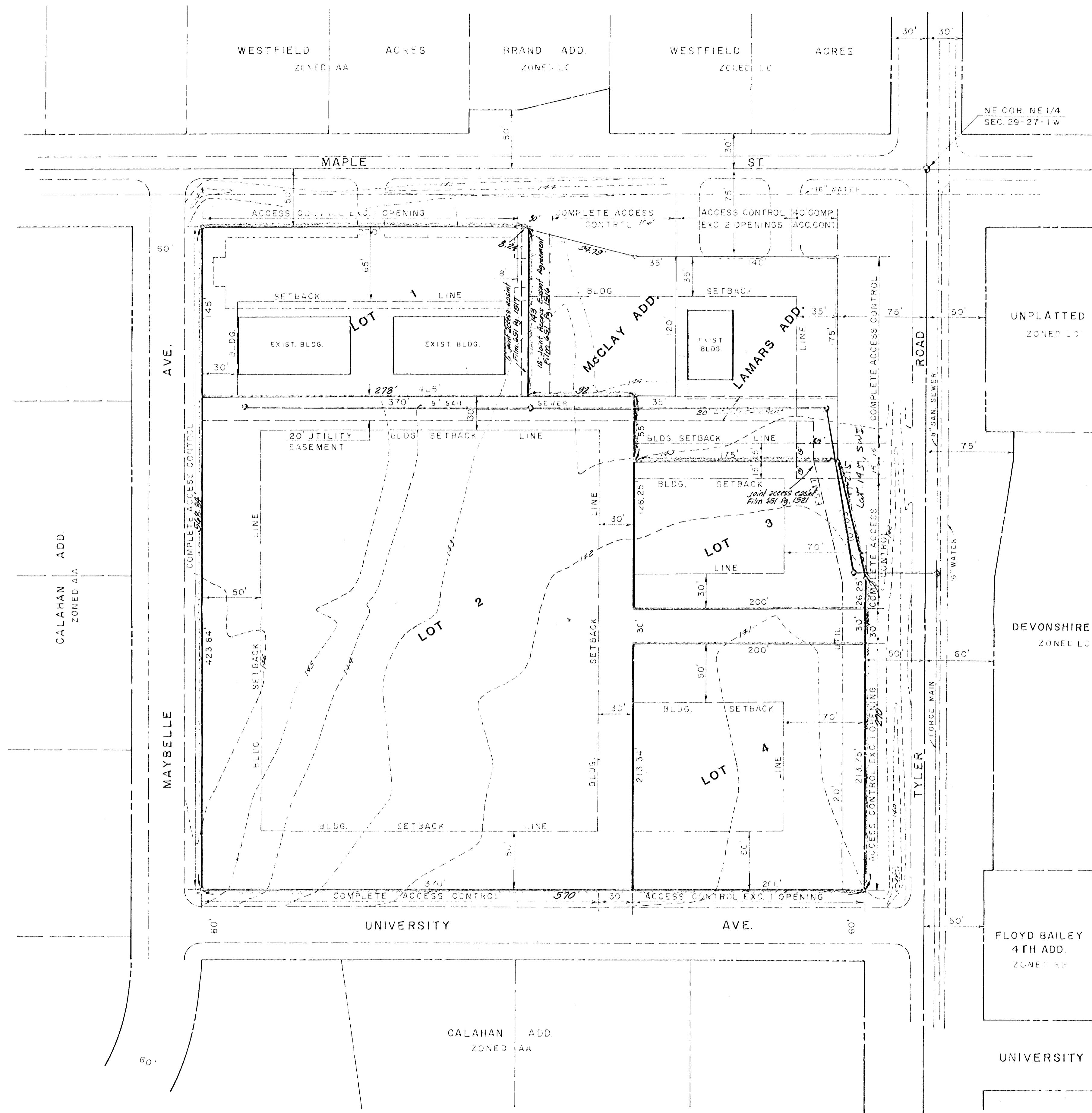


SCALE: 1" = 50'



**SKETCH PLAT
WESTWOOD HILLS ADDITION**

PART OF BLOCK Z, CALLAHAN ADDITION,
SEDGWICK COUNTY, KANSAS

OWNERS:
R. KELL HAWKINS and V. JERRY BLUE

BAUGHMAN COMPANY, P.A.
SURVEYING & ENGINEERING
316 262-7271 • 330 LAURA • WICHITA, KANSAS 67211

7-6-1984