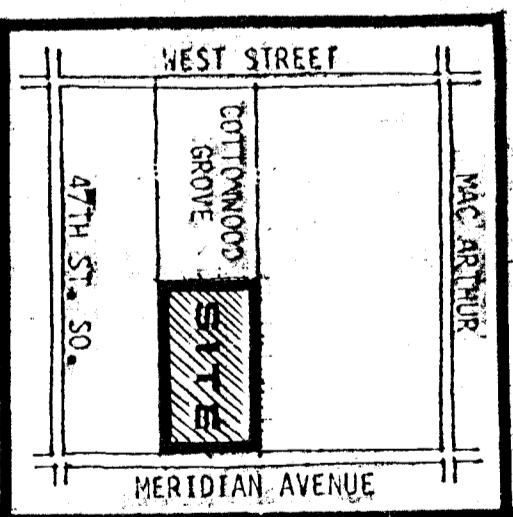


# PRELIMINARY PLAT

# SOUTH PARK 2ND ADDITION

OWNER: GLOBAL REDEVELOPMENT, INC., 290 W. ROCK ROAD, WICHITA, KS.

AREA MAP



NORTH

SCALE 1" = 100'

**NOTES:**  
 1. RESERVE FOR DRAINAGE, OPEN SPACE, DETENTION FACILITY AND RECREATION.  
 2. RESERVE 75' x 150' FOR DRAINAGE, OPEN SPACE AND RECREATION.  
 3. DRAINAGE CONCEPT TO BE PREPARED AND SUBMITTED BY ARCHITECT.

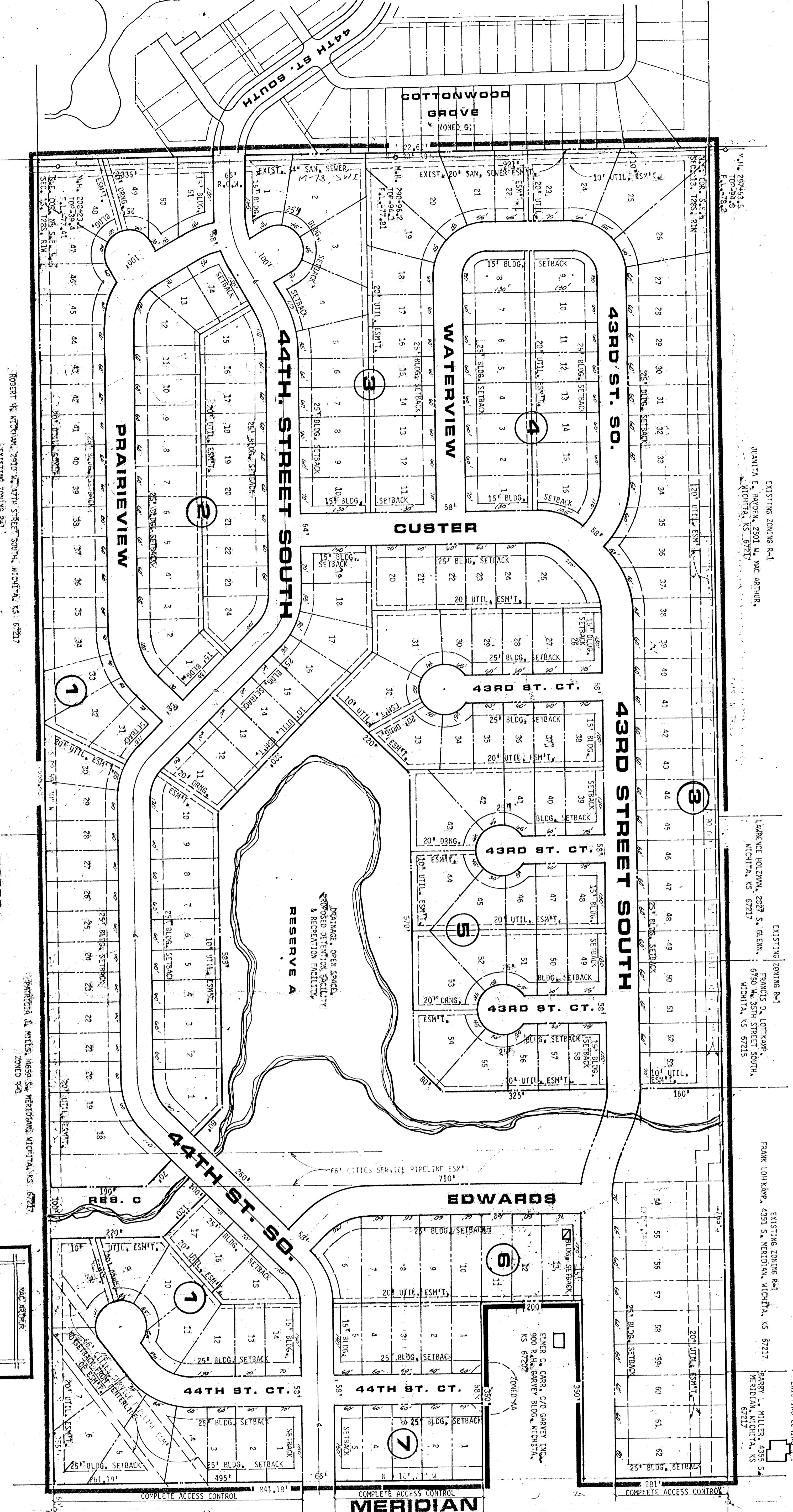
ROBERT H. WIDHORN, 2910 W. 57TH STREET SOUTH, WICHITA, KS. 67217  
 EXISTING ZONING R-1

WALTER A. WILLS, 4650 S. MERIDIAN, WICHITA, KS. 67217  
 EXISTING ZONING R-1

SEAN L. SMITH, 201 W. 11TH STREET, WICHITA, KS. 67217  
 ROBERT R. DAWSON, 4650 S. MERIDIAN, WICHITA, KS. 67217  
 ZONED M1

JAMES H. EBERHARDT, 4560 S. MERIDIAN, WICHITA, KS. 67217  
 ZONED M1

JOHN DUNN, 4650 S. MERIDIAN, WICHITA, KS. 67217  
 ZONED M1



EXISTING ZONING R-1  
 JUANITA E. BARDEN, 2901 W. WAC ARTHUR, WICHITA, KS. 67217

EXISTING ZONING R-1  
 LAWRENCE HOLZMAN, 2827 S. BLENN, 6750 S. MERIDIAN, WICHITA, KS. 67215

EXISTING ZONING R-1  
 FRANK LOU KAPP, 4351 S. MERIDIAN, WICHITA, KS. 67217

EXISTING ZONING R-1  
 SARRY L. WILDER, 4355 S. MERIDIAN, WICHITA, KS. 67217



**BILL G. YUNG DESIGN**  
 8225 E. 35TH ST. NORTH, WICHITA, KS. 67226 316-693-5567