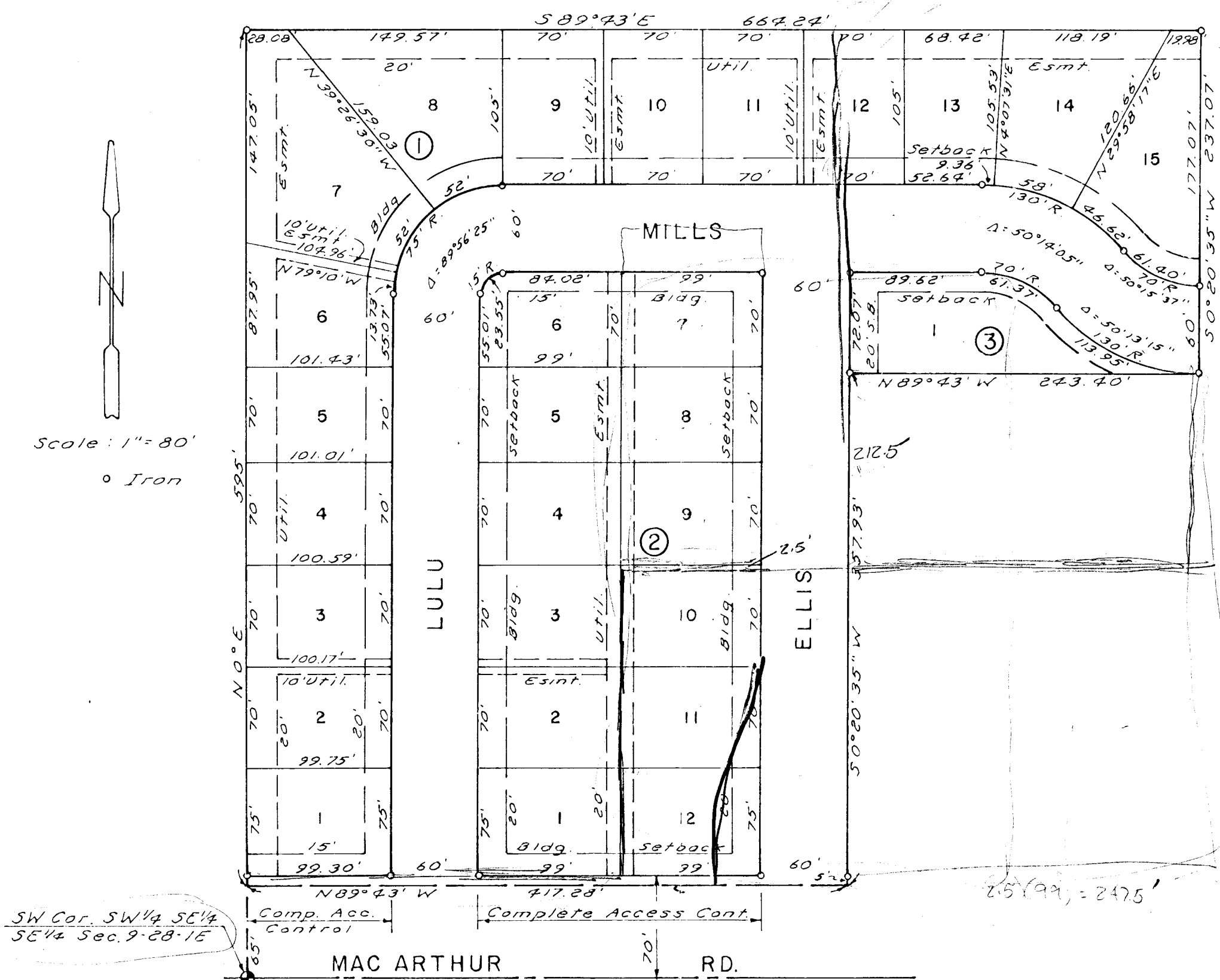


SOUTH FIELD ADDITION

WICHITA, KANSAS



State of Kansas } S.S.
 Sedgwick County } We, Baughman Company, P.A.,
 Surveyors in aforesaid county and state, do hereby
 certify that we have surveyed and platted "SOUTH
 FIELD ADDITION", Wichita, Kansas, and that the
 accompanying plat is a true and correct exhibit
 of the property surveyed described as the SW 1/4
 of the SE 1/4 of the SE 1/4 of Section 9, T.28 S., R. 1 E.,
 Sedgwick County, Kansas, except the south 422.93
 feet of the east 243.40 feet thereof, and except
 ing the south 65 feet for street.

Date _____ Baughman Company, P.A.

 John E. Lundolada Surveyor

Know all men by these presents that we,
 the undersigned, have caused the land described
 in the surveyors certificate to be platted into
 lots, blocks and streets to be known as "SOUTH
 FIELD ADDITION", Wichita, Kansas. The easements
 are hereby granted as indicated for the construction
 and maintenance of public utilities. The streets
 are hereby dedicated to and for the use of the
 public. All abutters rights of access to MacArthur
 Road over and across the south line of Blocks 1
 and 2 are hereby granted to the City of Wichita,
 Kansas.

_____ Jerome D. Holt _____ Yvonne Holt

State of Kansas } S.S.
 Sedgwick County } The foregoing instrument was
 acknowledged before me this _____ day of _____
 1980, by Jerome D. Holt and Yvonne Holt, his wife.

_____ Notary Public
 My Commission Expires _____

This plat of "SOUTH FIELD ADDITION",
 Wichita, Kansas, has been submitted to and
 approved by the Wichita-Sedgwick County
 Metropolitan Area Planning Commission,
 Wichita, Kansas. Dated this _____ day of _____,
 1980.

Wichita-Sedgwick County Metropolitan
 Area Planning Commission

_____ Chairman
 William J. Gabel

_____ Secretary
 Robert A. Lakin

This plat approved and all dedications
 shown hereon accepted by the Board of City
 Commissioners, Wichita, Kansas, this _____
 day of _____, 1980.

_____ Mayor
 Robert B. Knight

_____ City Clerk
 Donald C. Glick

This plat approved and all dedications
 shown hereon accepted by the Board of County
 Commissioners, Sedgwick County, Kansas,
 this _____ day of _____, 1980.

_____ Chairman
 Everett Patrick

_____ Commissioner
 Tom Scott

_____ Commissioner
 Donald E. Gragg

_____ County Clerk
 Dorothy K. White

Entered on transfer record this
 _____ day of _____, 1980.

_____ County Clerk
 Dorothy K. White

State of Kansas } S.S.
 Sedgwick County } This is to certify that
 this plat has been filed for record in the
 Office of the Register of Deeds this _____
 day of _____, 1980, at _____ o'clock _____ M.,
 and is duly recorded.

_____ Register of Deeds
 Bertie K. McCart

_____ Deputy
 Pat Kettler

422.93
 2475
 102,789 ft²