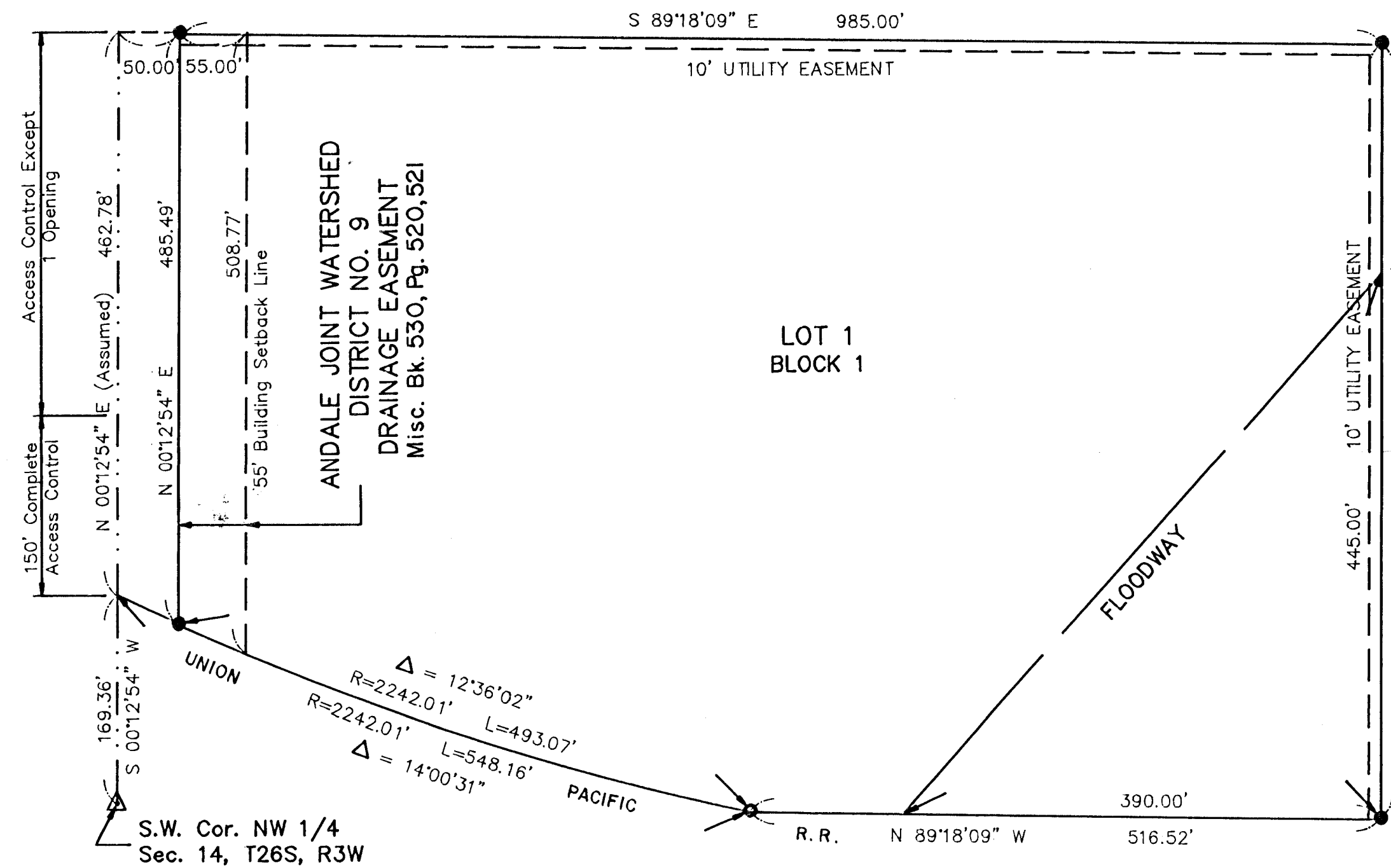


# SEDGWICK COUNTY ANDALE YARD

## SEDGWICK COUNTY, KANSAS

ANDALE ROAD  
(K-296)



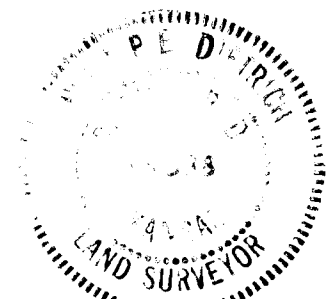
Minimum 1st Floor Elevation=1435.00 Mean Sea Level  
 Benchmarks:  $\odot$  U.S.G.S. "□" on Center of West Hubguard R.C.B.C. 225' S. of S.W. Cor. Sec. 14, T26S, R2W. Elev. 1449.86 Mean Sea Level  
 $\odot$  Spike Step in HLP 85.7' N.W. of W. 1/4 Cor. Sec. 14, T26S, R2W. Elev. 1436.94 Mean Sea Level

### LEGAL

STATE OF KANSAS }  
 COUNTY OF SEDGWICK } ss:

I, Phillip E. Dietrich, a Registered Land Surveyor in said State and County, do hereby certify that I have surveyed and platted "SEDGWICK COUNTY ANDALE YARD ADDITION", Sedgwick County, Kansas, into a Lot, a Block, a Street, and a Floodway, the same being accurately set forth on the accompanying plat and described as: Commencing at the Southwest corner of the Northwest Quarter of Section 14, Township 26 South, Range 3 West of the 6th P.M., Sedgwick County, Kansas; thence North along the West line of said Quarter with an assumed bearing of N 00°12'54" E, a distance of 169.36 feet to the North Right of Way line of the Union Pacific Railroad for a place of beginning; thence continuing along said West line bearing N 00°12'54" E, a distance of 462.78 feet; thence bearing S 89°18'09" E and parallel to the South line of said Northwest Quarter, a distance of 1035.00 feet; thence bearing S 00°12'54" W and parallel to the West line of said Northwest Quarter, a distance of 632.14 feet to the South line of said Northwest Quarter; thence Westerly along South line of said Northwest Quarter on a bearing S 89°18'09" W, a distance of 516.52 feet to the Northerly Right of Way of the Union Pacific Railroad; thence along said Northerly Right of Way on a curve to the right with a Central Angle of 14°00'31", a radius of 2242.01 feet, a distance of 548.16 feet to the place of beginning.

*Phillip E. Dietrich*  
 Phillip E. Dietrich  
 Reg. No. 538  
 Surveyor



● = IRON SET  
 ○ = EXISTING IRON



Board of County Commissioners of Sedgwick County, Kansas

*Billy Q. McCray* Chairman  
 Billy Q. McCray  
 Attest: *Don Wright* County Clerk  
 Don Wright

SCALE: 1 in. = 100 ft.

STATE OF KANSAS

COUNTY OF SEDGWICK

The foregoing instrument acknowledged before me this 22<sup>nd</sup> day of April, 1991, by Billy Q. McCray, Chairman of the Board of County Commissioners of Sedgwick County, Kansas, on behalf of Sedgwick County.

*Darlene J. Clawson* Notary Public  
 Darlene J. Clawson  
 My Commission Expires August 18, 1993

This plat of "SEDGWICK COUNTY ANDALE YARD" has been submitted to and approved by the Wichita-Sedgwick County Metropolitan Area Planning Commission.

Dated this 25<sup>th</sup> day of April, 1991.

WICHITA-SEDGWICK COUNTY METROPOLITAN AREA PLANNING COMMISSION

*George Sherman* Chairman  
 George Sherman  
*Marvin S. Krout* Secretary  
 Marvin S. Krout

This plat has been approved and all dedications shown hereon, if any, accepted by the Board of Commissioners of Sedgwick County, Kansas this \_\_\_\_\_ day of \_\_\_\_\_, 1991.

\_\_\_\_\_  
 Billy Q. McCray Chairman  
 \_\_\_\_\_  
 Betsy Gwin Chair Pro Tem  
 \_\_\_\_\_  
 Paul W. Hancock Commissioner  
 \_\_\_\_\_  
 Bernard A. Hentzen Commissioner  
 \_\_\_\_\_  
 Mark F. Schroeder Commissioner

Attest: \_\_\_\_\_  
 Don Wright County Clerk

STATE OF KANSAS, COUNTY OF SEDGWICK, SS:

This is to certify that this instrument was filed for record in the Register of Deeds Office at \_\_\_\_\_ on the \_\_\_\_\_ day of \_\_\_\_\_, 1991.

\_\_\_\_\_  
 Pat Kettler Register of Deeds  
 \_\_\_\_\_  
 Ed Resa Deputy  
 Entered on transfer record this \_\_\_\_\_ day of \_\_\_\_\_, 1991.  
 \_\_\_\_\_  
 Don Wright County Clerk

