

PRELIMINARY PLAT SEDGWICK COUNTY CLONMELL YARD

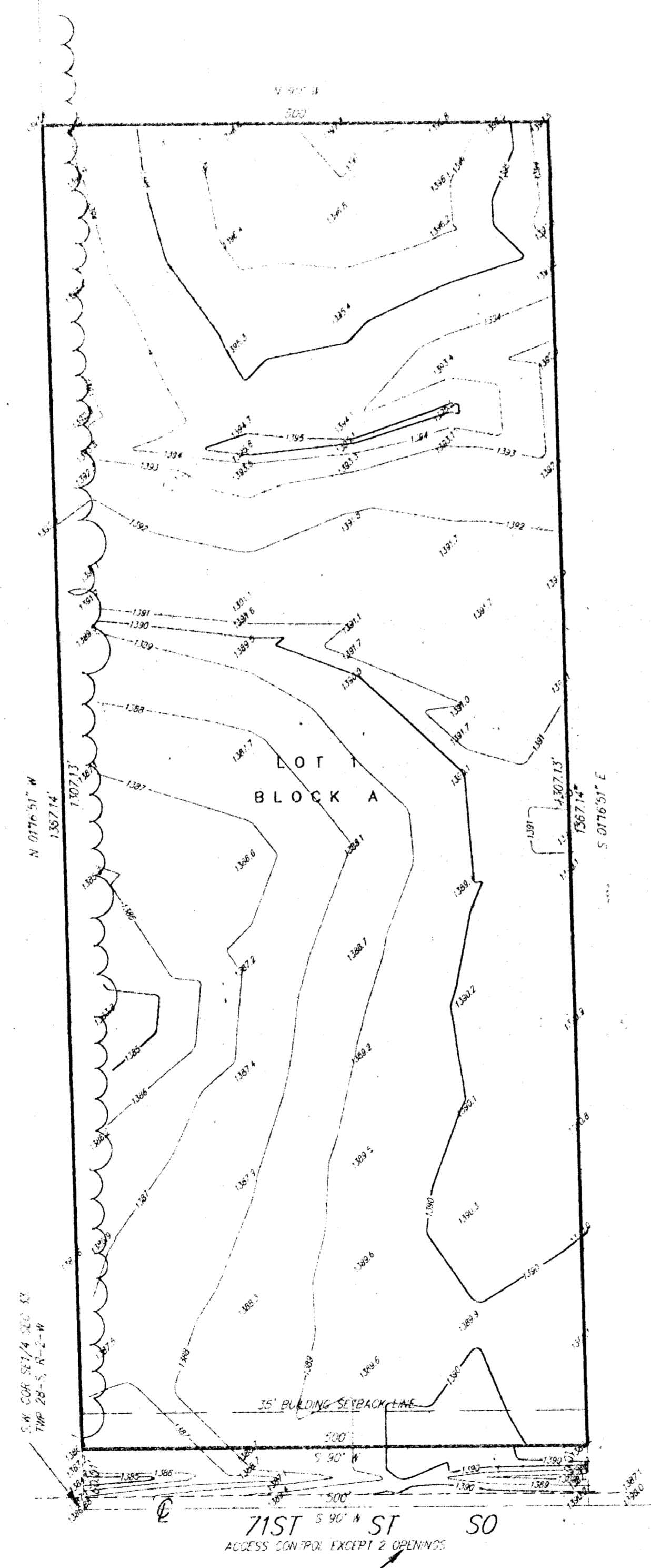
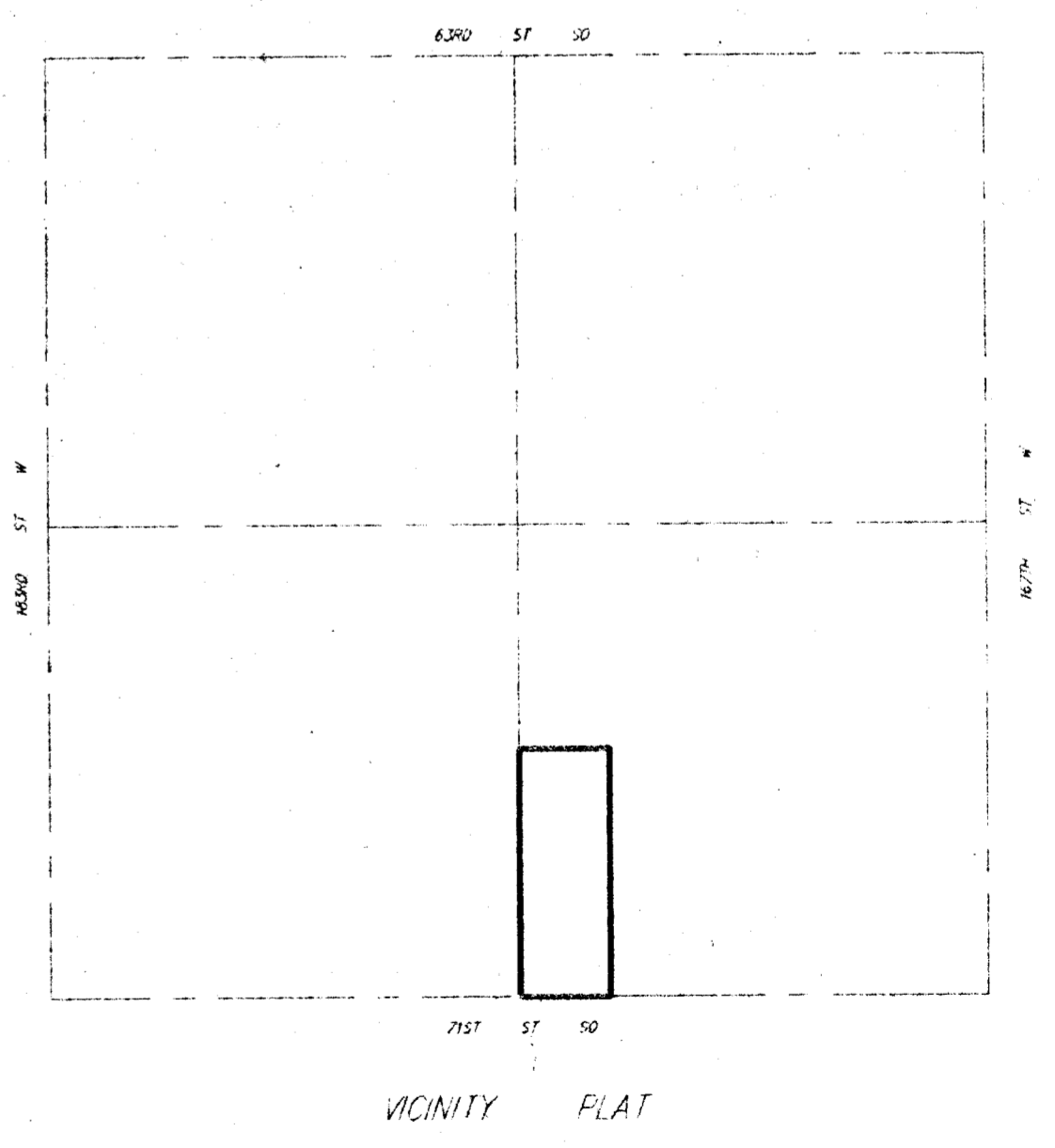
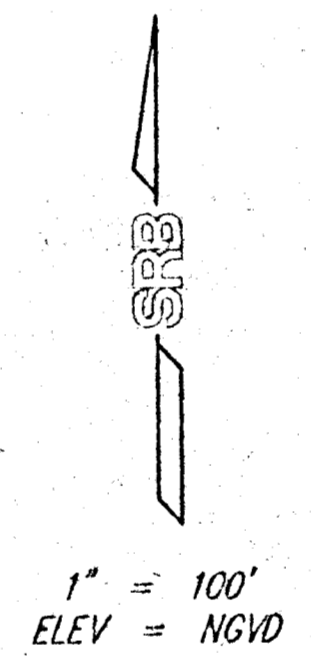
AN ADDITION TO SEDGWICK COUNTY, KANSAS

Beginning at the S.W. Corner of the SE1/4 of Sec. 33, Twp. 28-S, R-2-W of the 6th P.M., Sedgwick County, Kansas; thence N01°16'51"W, along the west line of said SE1/4, 1367.14 feet; thence N90°E, parallel with the south line of said SE1/4, 500 feet; thence S01°16'51"E, parallel with the west line of said SE1/4, 1367.14 feet to the south line of said SE1/4; thence S90°W, along the south line of said SE1/4, 500 feet to the place of beginning.

SEDGWICK COUNTY
% Sedgwick County Public Works
ATTN: Jim Webber
1250 S. Seneca
Wichita, KS 67213
PH 383-7901

BENCH MARK:
RR Spike in N.E. Face of HLP
50' S.W. of Sec. Corner @
167th St. W. & 71st St. So.
Elevation = 1386.72 NGVD

Bench Mark: (SET)
Elevation = 1388.14 NGVD



BENCH MARK:
ELEV = 1388.14 NGVD

SRB 324 NORTH MAIN 316-264-8008
WICHITA, KANSAS 67203 FAX 264-4621
SAVOY, RUGGLES & BOHM, P. A.
ENGINEERING & SURVEYING

FEB 1994