

STONEBOROUGH

AN ADDITION TO WICHITA,
SEDGWICK COUNTY, KANSAS



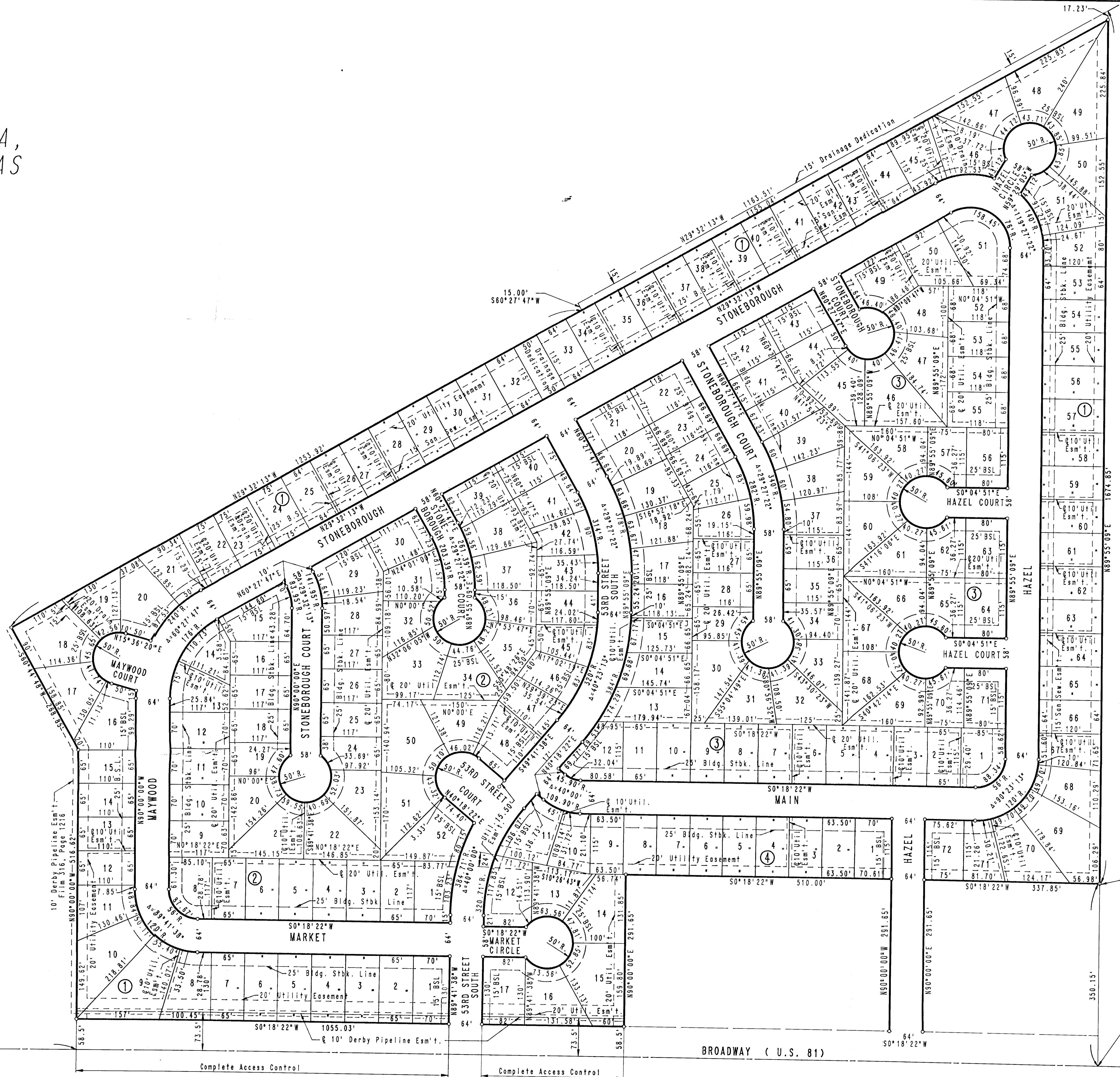
SCALE: 1"=100'

o = SET IRON
B.S.L. = BUILDING SETBACK LINE

B.M. - CITY OF WICHITA BENCH MARK DISC 44' EAST AND
52' SOUTH OF THE INTERSECTION OF THE
CENTERLINES OF BROADWAY AND 55TH STREET
SOUTH.

ELEV. +83.575 CITY DATUM
ELEV. +1270.975 M.S.L.

MINIMUM PAD ELEVATION AS FOLLOWS:
(LOWEST OPENING)
LOTS 18 THROUGH 56, BLOCK 1 -
84.2 CITY DATUM OR 1271.6 M.S.L.



S.E. CORNER S.E. 1/4
SEC. 20, T28S, R1E
OF THE 6TH P.M.

N.E. CORNER S.E. 1/4
SEC. 20, T28S, R1E
OF THE 6TH P.M.

679.66'

Complete Access Control

Complete Access Control

BROADWAY (U.S. 81)

POINT OF BEGINNING