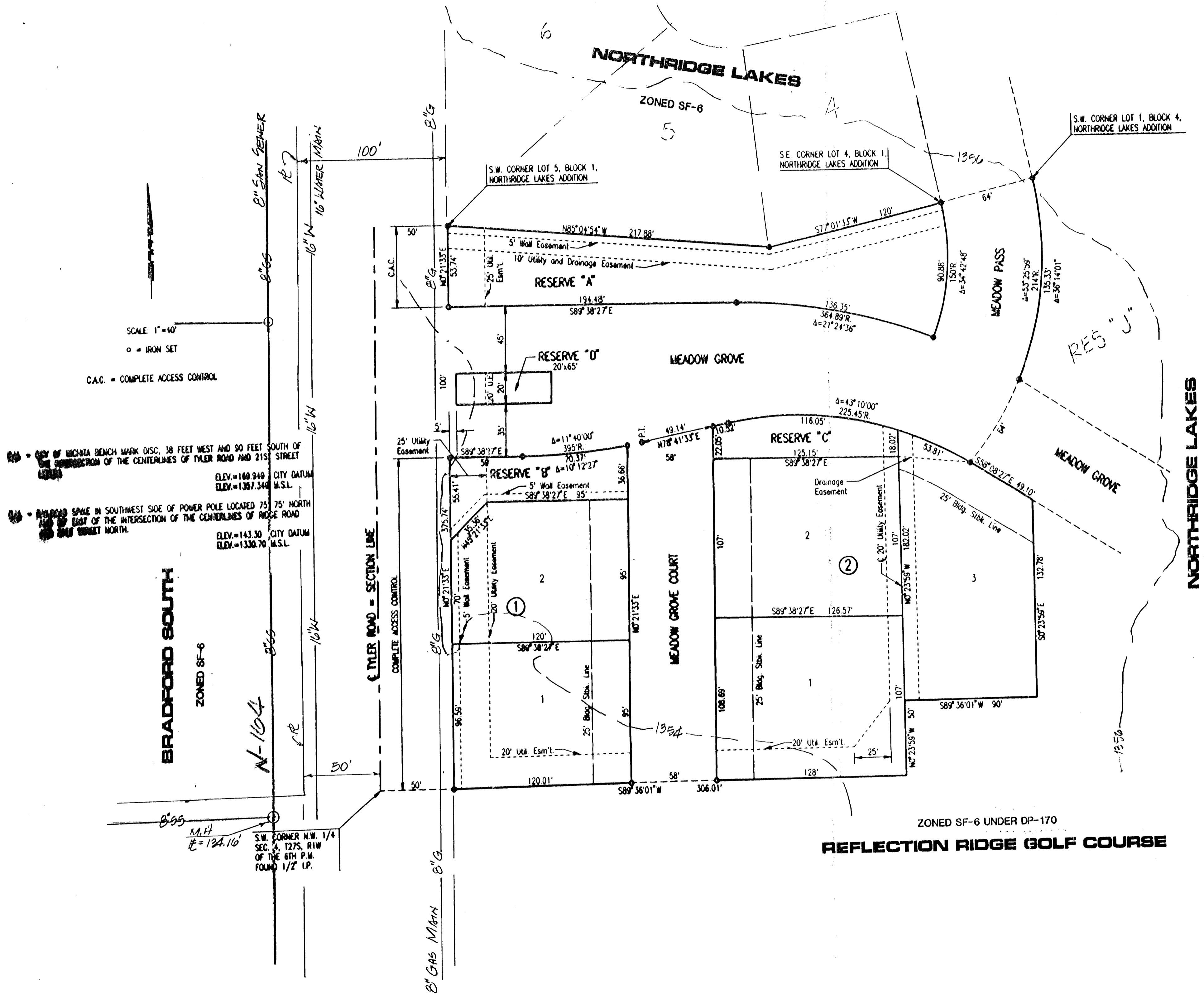


NORTHRIDGE LAKES 2ND ADDITION

TO WICHITA, SEDGWICK COUNTY, KANSAS

VICINITY MAP



SCALE: 1" = 40'
 ○ = IRON SET
 C.A.C. = COMPLETE ACCESS CONTROL

• CITY OF WICHITA BENCH MARK DISC, 38 FEET WEST AND 90 FEET SOUTH OF THE INTERSECTION OF THE CENTERLINES OF TYLER ROAD AND 215' STREET
 ELEV. = 180.940 CITY DATUM
 ELEV. = 1387.340 M.S.L.

• AN IRON SPIKE IN SOUTHWEST SIDE OF POWER POLE LOCATED 75' 75" NORTH AND 80' EAST OF THE INTERSECTION OF THE CENTERLINES OF RIDGE ROAD AND 215' STREET NORTH.
 ELEV. = 143.30 CITY DATUM
 ELEV. = 1330.70 M.S.L.

ZONED SF-6 UNDER DP-170
REFLECTION RIDGE GOLF COURSE