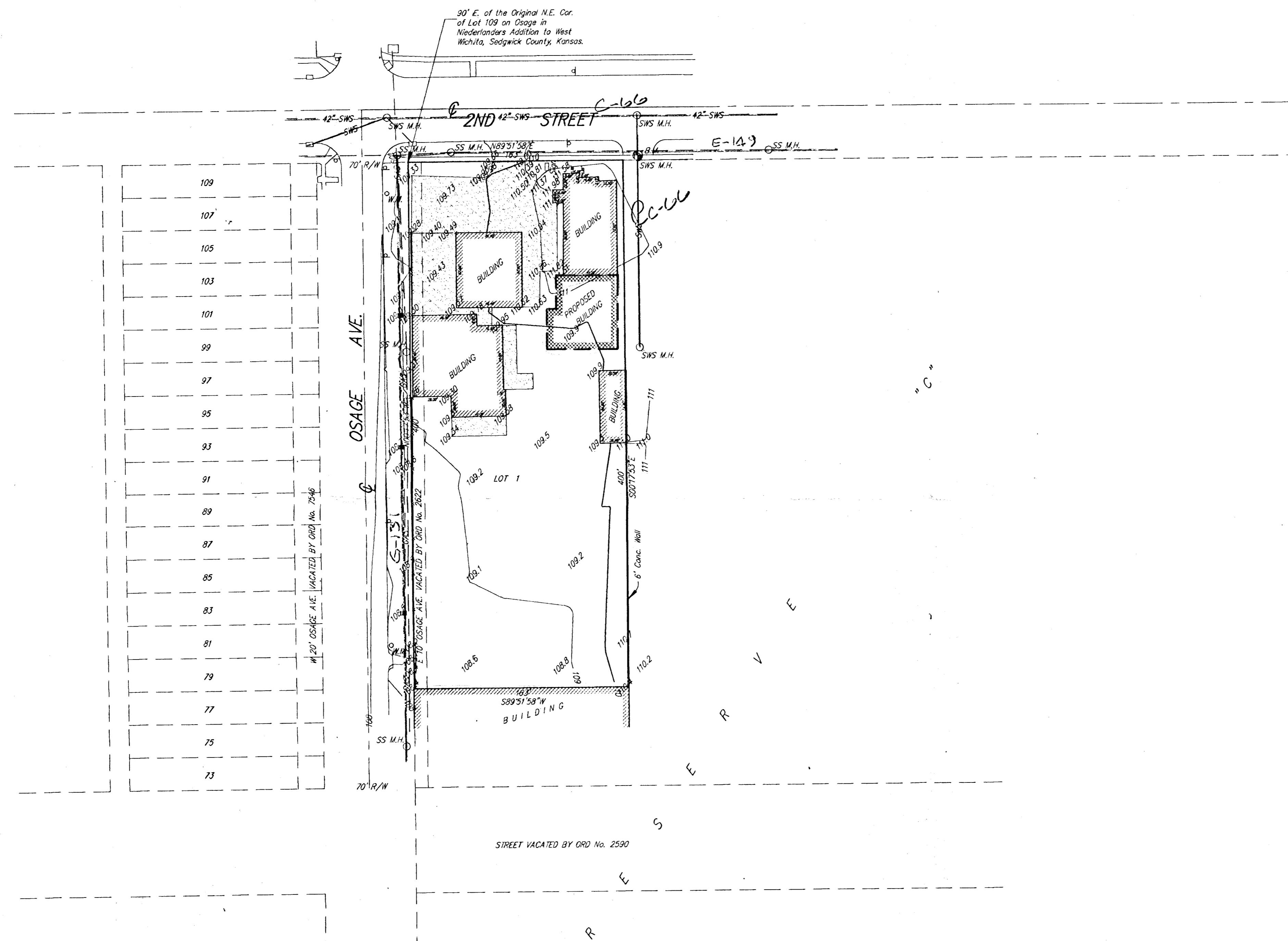


# SKETCH PLAT KEY CONSTRUCTION ADDITION

WICHITA, SEDGWICK COUNTY, KANSAS



That Part of Reserve C, in Niederlander's Addition to West Wichita, Sedgwick County, Kansas, described as:

Beginning at the intersection of the South Line of Second Street extended east, and the East Line of Osage as platted in Niederlander's Addition; thence east along said South Line of Second Street, 153 feet; thence south parallel with the East Line of said Osage Street, 400 feet; thence west 153 feet to the East Line of Osage Street as platted in Niederlander's Addition to West Wichita; thence north along, said East Line of Osage Street, 400 feet to the place of beginning, together with the vacated east 10 feet of Osage Street adjacent of the west.

GROSS SIZE  
65,199.73 SQ. FT ±  
1.497 ACRES ±

NET SIZE  
65,199.73 SQ. FT ±  
1.497 ACRES ±

Kenneth A. Wells  
David E. Wells  
741 W. 2nd St.  
Wichita, Kansas 67203

Ph. (316) 263-9515



1" = 50'

Min. Pad Elev. for lowest  
Floor = 1324 MSL

BENCH MARK:  
N. Rim of Manhole  
12' NE of NE Corner of Property  
Elev. = 110.52 (City of Wichita, Datum)  
Elev. = 1297.92 (MSL)