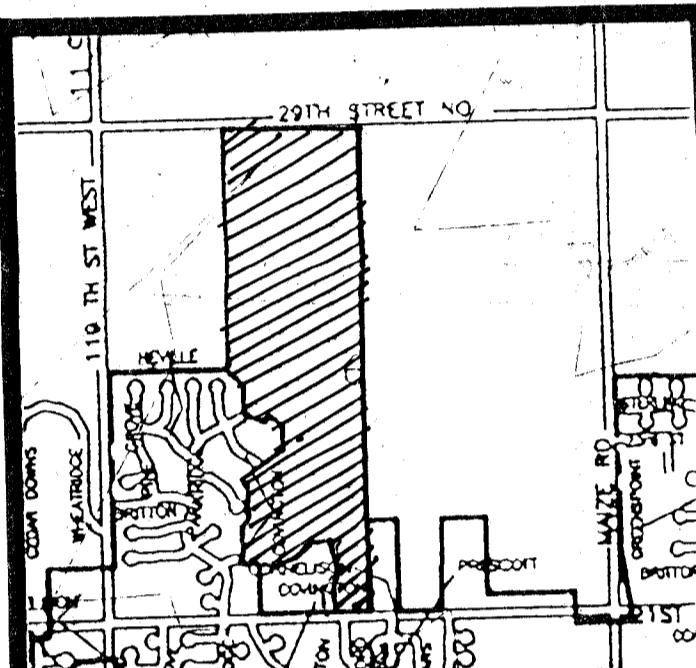
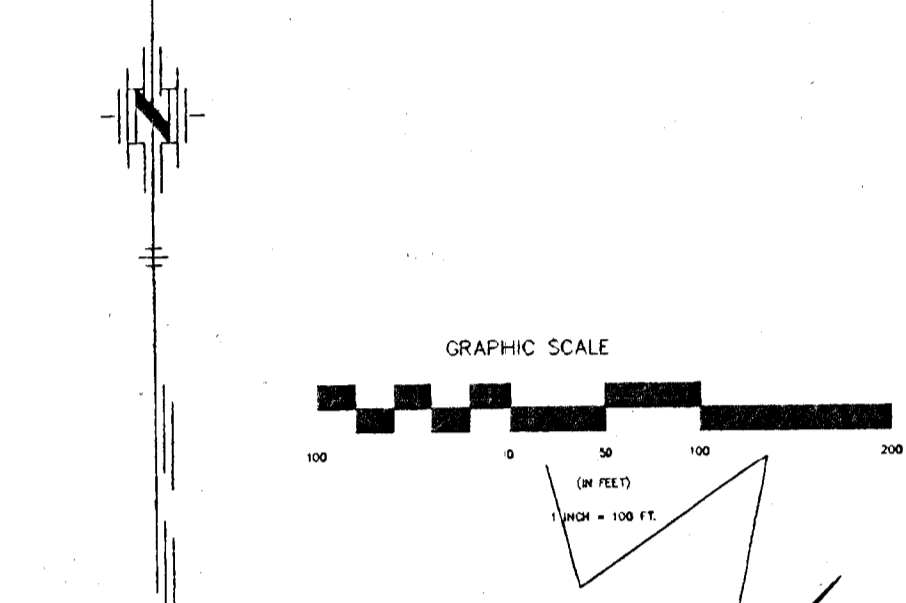
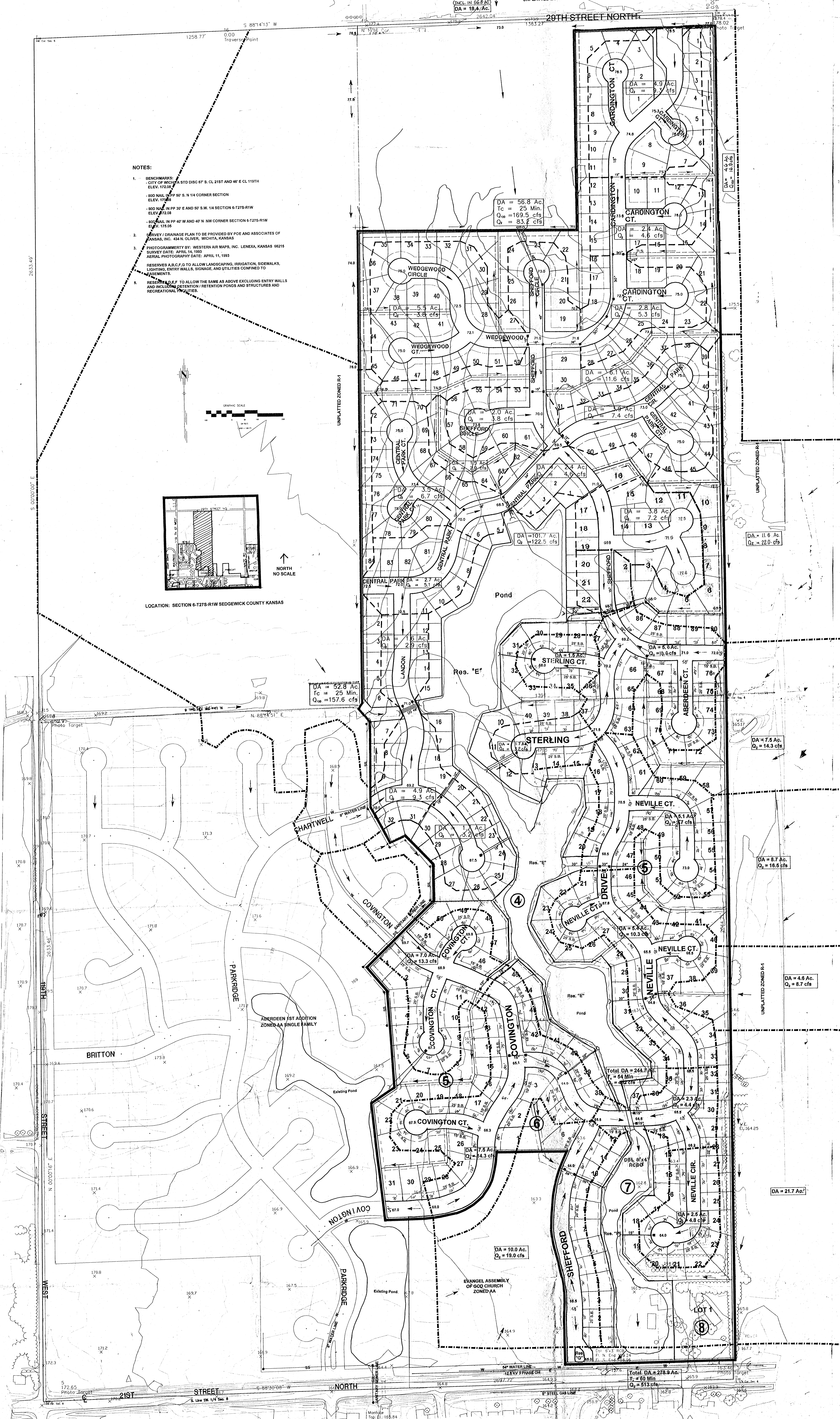


NOTES:

- BENCHMARKS:
CITY OF WICHITA STD DISC 87 S. CL 2187 AND 48' E CL 119TH ELEV. 1720.9
800 NAL IN PP 37 S. N 14 CORNER SECTION ELEV. 1718.4
800 NAL IN PP 37 E AND 50' S.W. 14 SECTION 8-1278-R1W ELEV. 1720.8
800 NAL IN PP 40' W AND 40' N NW CORNER SECTION 8-1278-R1W ELEV. 1720.9
- SURVEY / DRAINAGE PLAN TO BE PROVIDED BY POE AND ASSOCIATES OF KANSAS, INC. 434 N. OLIVER, WICHITA, KANSAS
- PHOTOGRAMMETRY BY: WESTERN AIR MAPS, INC. LENEXA, KANSAS 66215
SURVEY DATE: APRIL 14, 1993
AERIAL PHOTOGRAPHY DATE: APRIL 11, 1993
- RESERVES A, B, C, F, G TO ALLOW LANDSCAPING, IRRIGATION, SIDEWALKS, LIGHTING, ENTRY WALLS, SIGNAGE, AND UTILITIES CONFORM TO PERMITS.
- RESERVE F, G, H TO ALLOW THE SAME AS ABOVE EXCLUDING ENTRY WALLS AND INCLUDING RETENTION / RETENTION PONDS AND STRUCTURES AND RECREATIONAL FACILITIES.

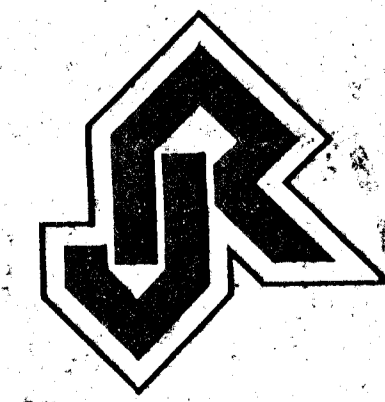


LOCATION: SECTION 8-1278-R1W SEDGEWICK COUNTY KANSAS



PRELIMINARY PLAT DRAINAGE PLAN
ABERDEEN 2ND ADDITION

DATE: APRIL 1, 1998



POE & ASSOCIATES OF KANSAS, INC.
 CONSULTING ENGINEERS
 434 N. Oliver, Suite 110 • Wichita, Kansas 67208
 Phone 316-688-4114 • FAX 316-688-4144

OWNER: JAH CORP. 466 N. WALDE ROAD WICHITA, KANSAS 67211 (316) 732-2417

RUSSELL
 HOMES