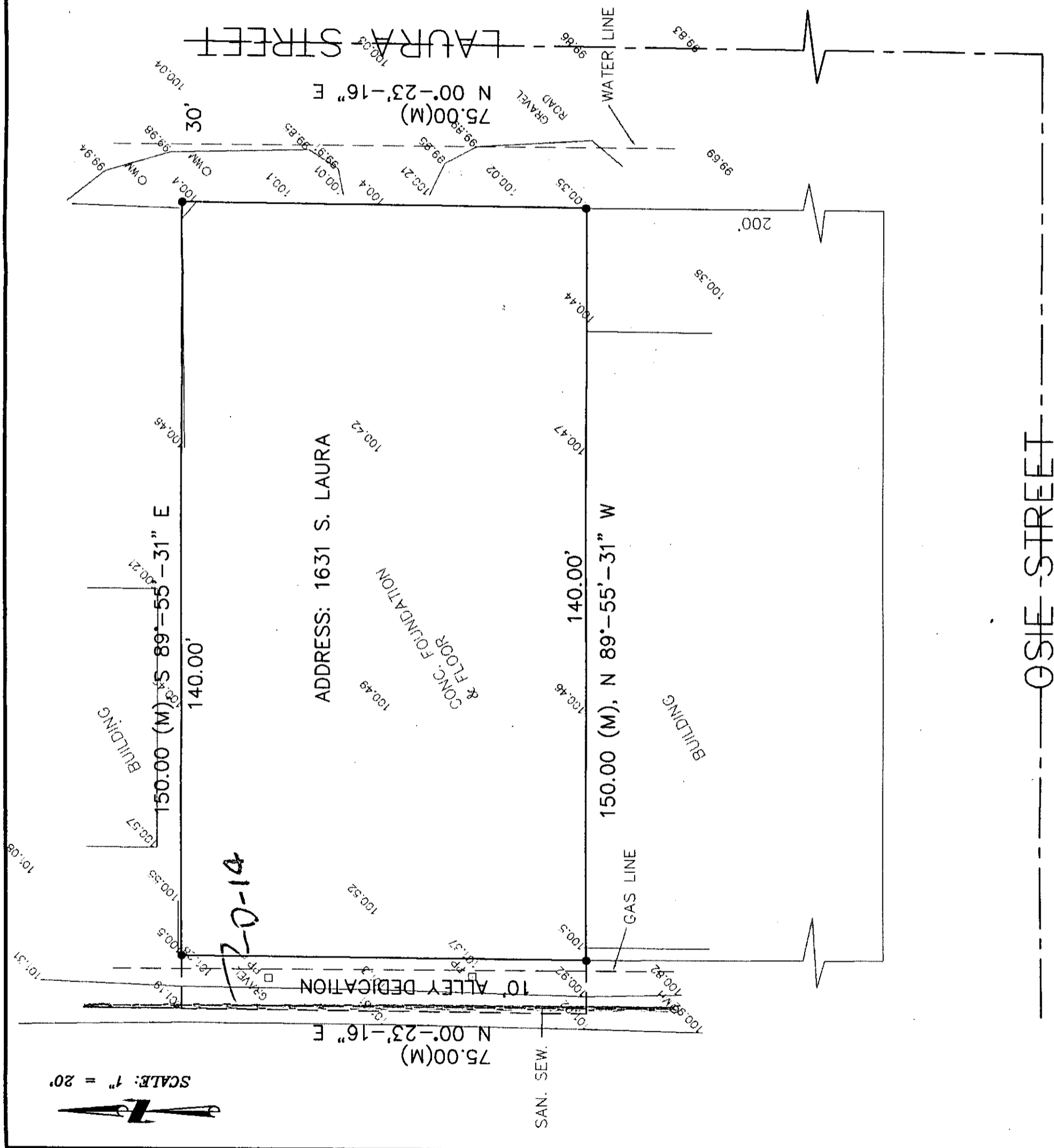


SCALE: 1" = 20'



SUBDIVIDER:

G.O. CHAMP
CHAMP WIPING RAG COMPANY
P.O. BOX 361
GODDARD, KANSAS 67052

SURVEYOR:

BABAR M. KHAN, L.S.
MUNICIPAL ENGINEERS, P.A.
254-LAURA, SUITE 201
WICHITA, KANSAS 67211

AREA:

GROSS = 0.26 ACRES
NET = 0.24 ACRES

NO. OF LOTS = 1

LEGAL DESCRIPTION:

THE SOUTH 75 FEET OF THE NORTH 125 FEET OF THE FOLLOWING DESCRIBED TRACT: BEGINNING 553 FEET EAST AND 315 FEET SOUTH OF THE NORTHWEST CORNER OF THE NORTHEAST QUARTER OF SECTION 33, TOWNSHIP 27 SOUTH, RANGE 1 EAST OF THE 6TH PRINCIPAL MERIDIAN, SEDGWICK COUNTY, KANSAS; THENCE SOUTH 275 FEET; THENCE EAST 150 FEET; THENCE NORTH 275 FEET; THENCE WEST 150 FEET TO PLACE OF BEGINNING.

VICINITY MAP
LESTER ADDITION TO WICHITA,
SEDGWICK COUNTY, KANSAS

OSIE STREET

5-20-95; 94-94

ME MUNICIPAL ENGINEERS
254-LAURA, SUITE 201
WICHITA, KANSAS 67211
316-262-3842