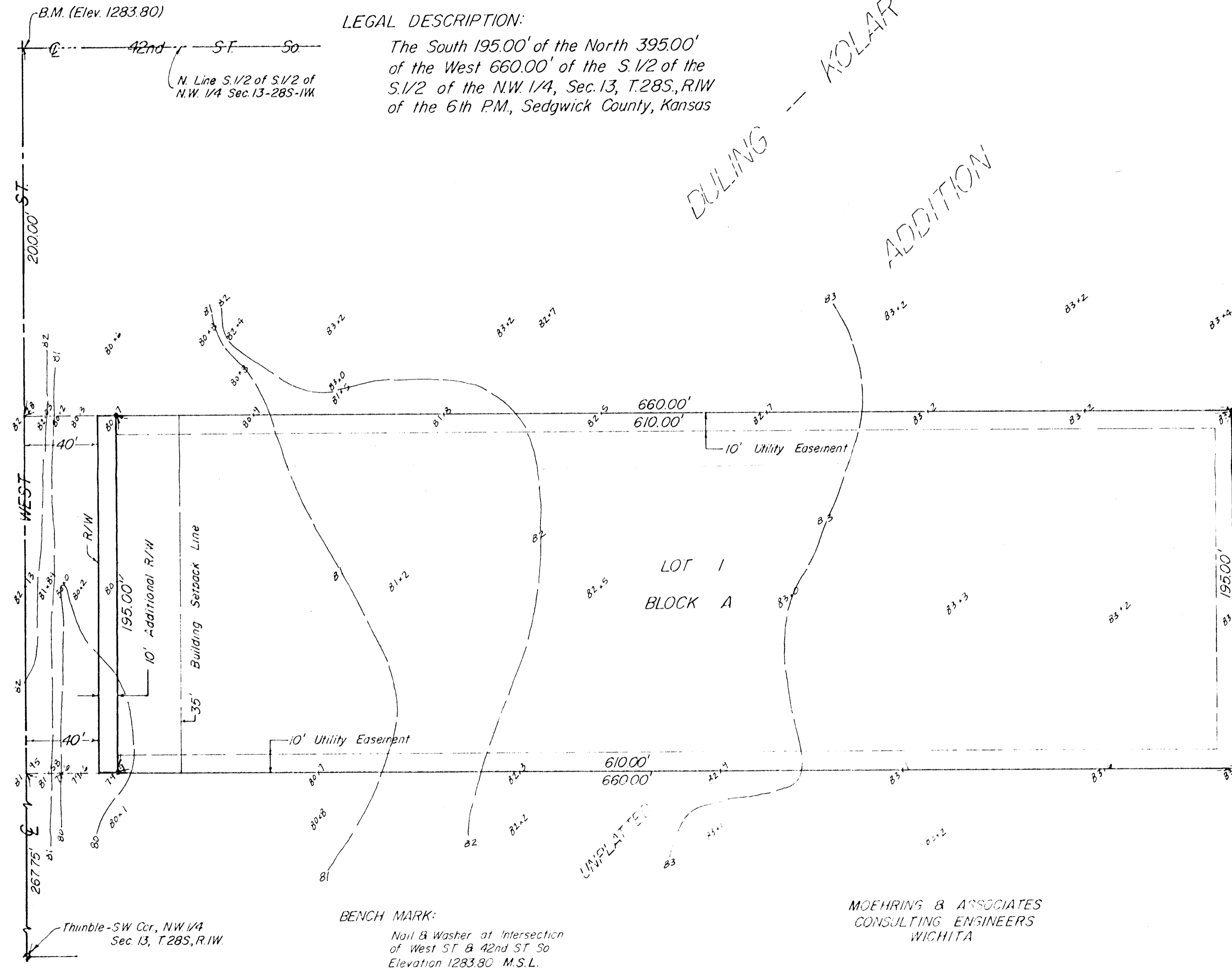


PRELIMINARY PLAT
OF
MEEK FIRST ADDITION
TO SEDGWICK COUNTY, KANSAS

LEGAL DESCRIPTION:

The South 195.00' of the North 395.00'
of the West 660.00' of the S 1/2 of the
S 1/2 of the N.W. 1/4, Sec. 13, T.28S., R.1W
of the 6th P.M., Sedgwick County, Kansas

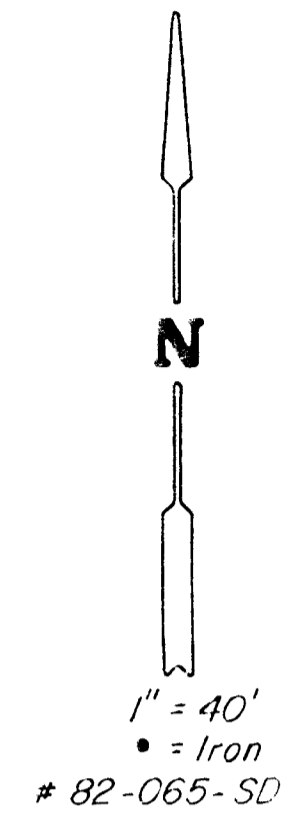
DULING -- KOLAR
ADDITION



BENCH MARK:

Nail & Washer at Intersection
of West St & 42nd St So
Elevation 1283.80 M.S.L.

MOEHRING & ASSOCIATES
CONSULTING ENGINEERS
WICHITA



UNPLATTED

VICINITY MAP

