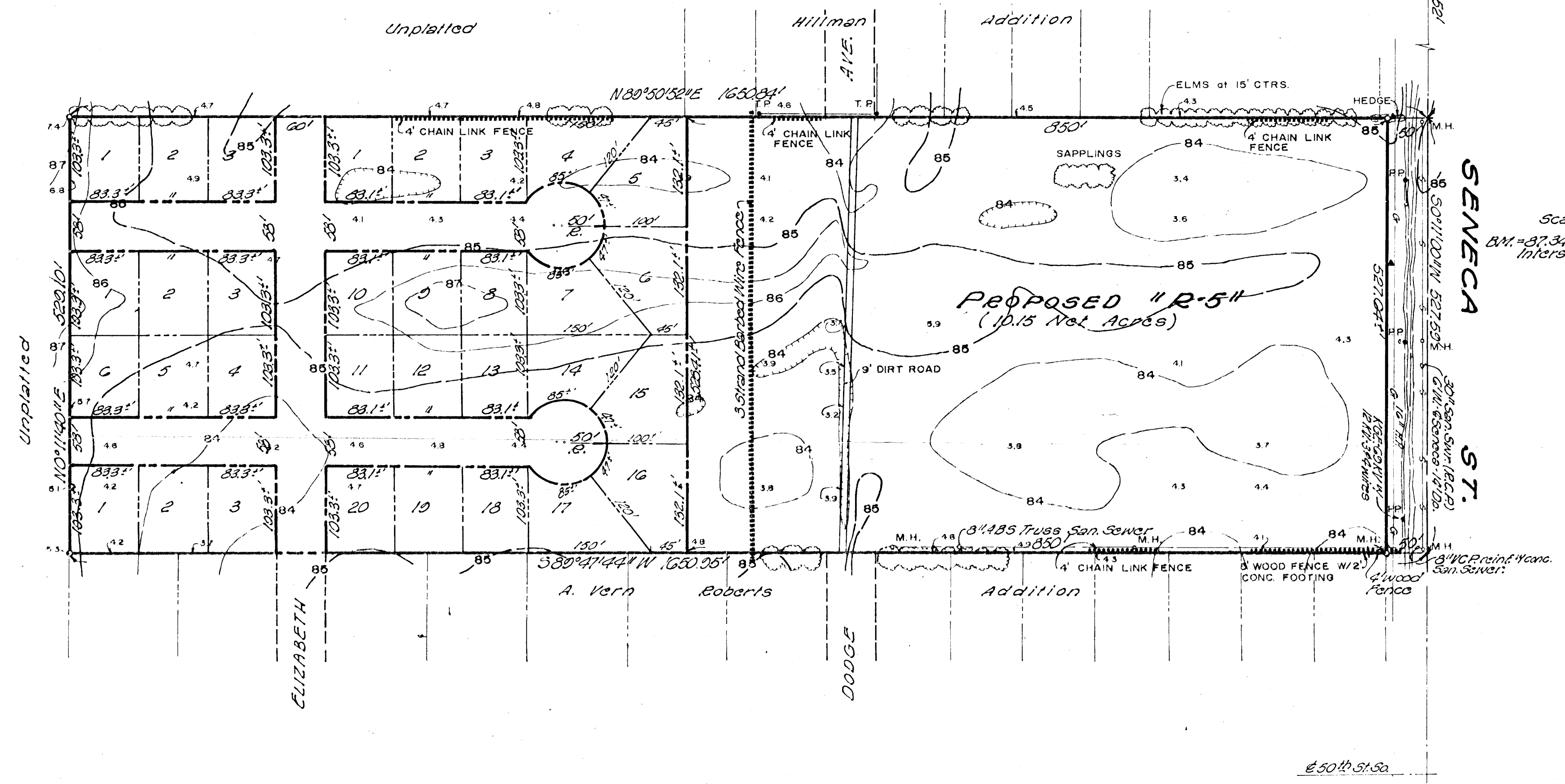


N.E. Cor. NE 1/4,  
Sec. 19, T28S, R1E



Scale: 1" = 100'  
B.M. = 87.34 Brass Cap - 74' N. 84.4' E.  
Intersection of Seneca & 47th St. So.

See  
Schultz  
Pur  
Johnson

# SENECA HILLS ADDITION

## "SKETCH PLAT"