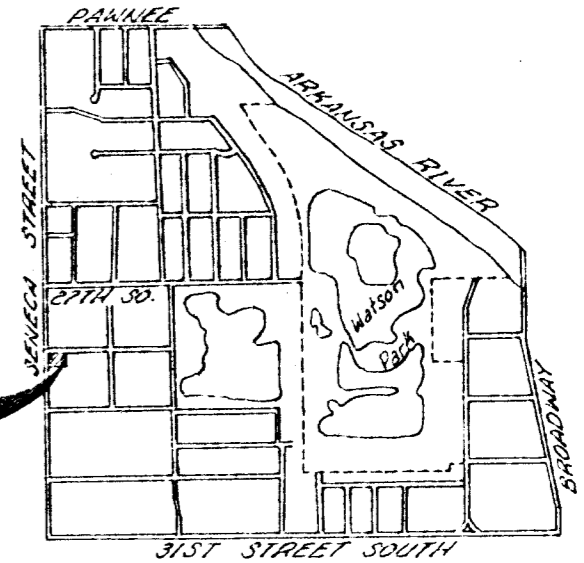


# LOCATION SKETCH FOR PROPOSED "SEDONA ADDITION", WICHITA, SEDGWICK COUNTY, KANSAS

VICINITY MAP

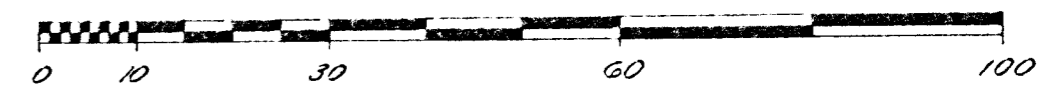
PART OF SEC. 5,  
T28S, R1E



Proposed location of  
"SEDONA ADDITION",  
Wichita, Sedgwick County,  
Kansas.



SCALE: 1"=20'



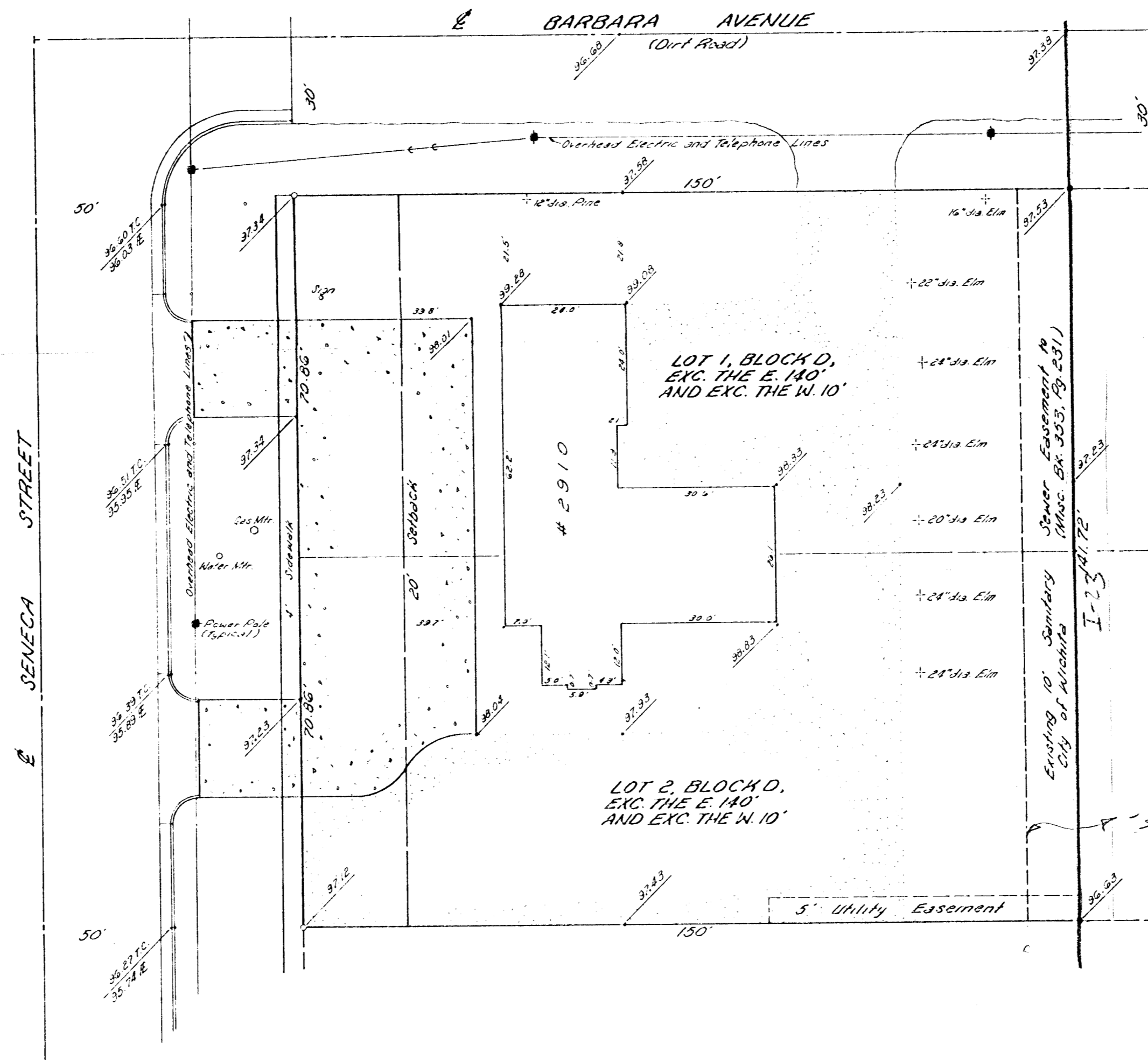
FILE #873302  
18 DEC, 1987

**GENERAL NOTES:**

- An 8" VCD Sanitary Sewer Line lies in the easement provided along the rear of subject property.
- A 12" Gas Line lies in the West right-of-way of Seneca Street.
- Water Lines are in place approximately 5' South of the South curb of Barbara - 2 1/2" cast & 2 1/2" plastic.
- BENCH MARK used for spot elevations was rim of sanitary sewer manhole at the rear of Lot A, Block D, "F.A. BROWN ADDITION". Elev. 36.50 City Datum

**OWNERS:**

Donald L. Harter 8430 Lakeland Ct. Wichita, Kansas 67207	Bethel Jo Harter P.O. Box 100 Sedona, Arizona 86336
--	---



TERRA TECH  
LAND SURVEYING INC.

245 West Dewey  
Wichita, Kansas 67202-3607  
(316) 287-0744 / 287-2348