

**NOTES:**

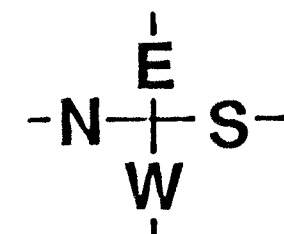
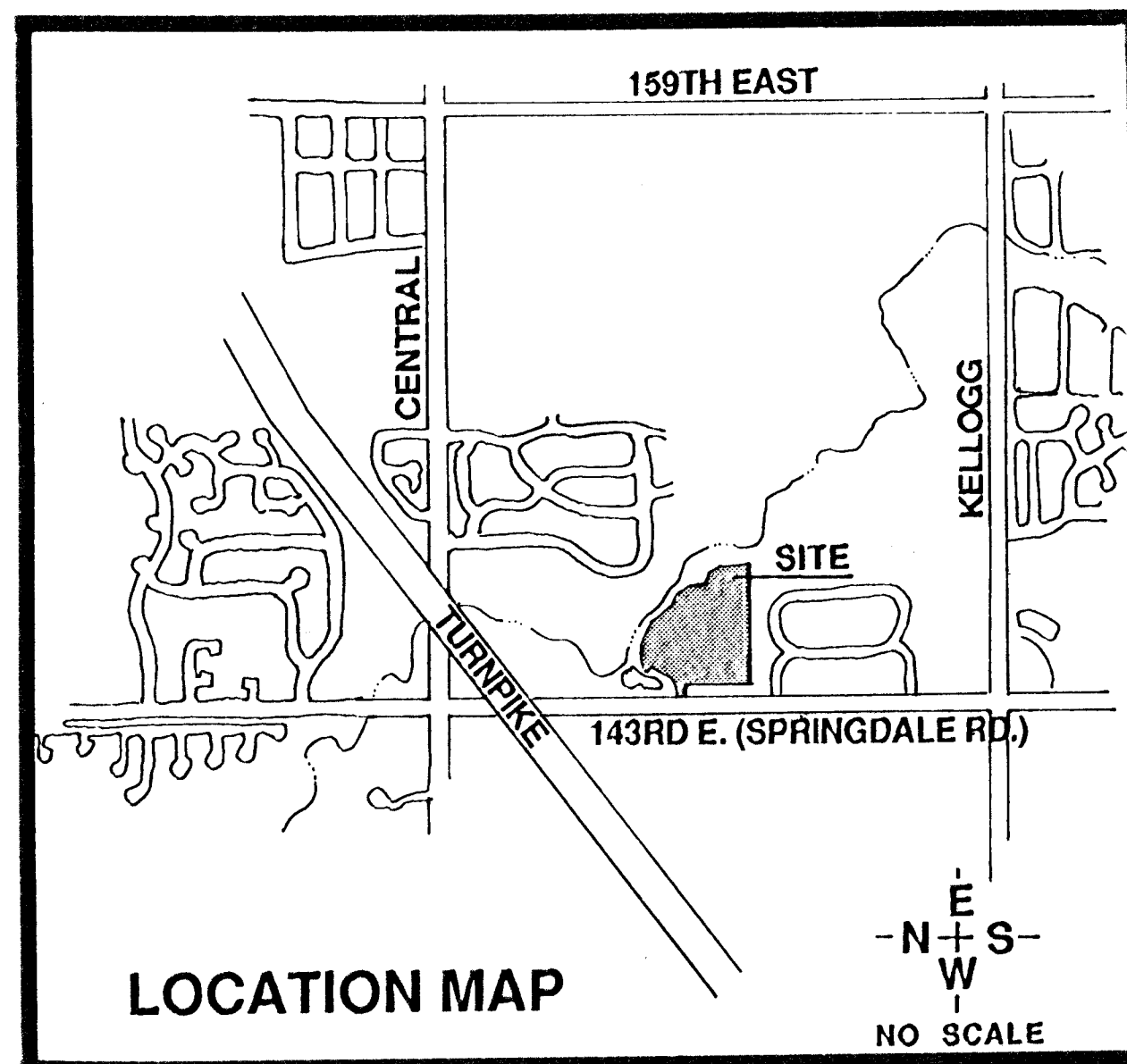
1. A DRAINAGE CONCEPT FOR THIS PROJECT HAS BEEN PREPARED BY MID KANSAS ENGINEERING CONSULTANTS.
2. FINAL PLAT SHALL BE PREPARED BY MID KANSAS ENGINEERING CONSULTANTS.
3. BENCH MARK : □ ON SW CORNER OF RCB ON STAGECOACH , ELEV. =1311.02
4. RESERVE DESCRIPTIONS :  

RESERVE 'A': SHALL PERMIT ENTRANCE MONUMENTS, LIGHTING, LANDSCAPING, WALKWAYS, DRAINAGE/DRAINAGE STRUCTURES, FENCING, AND UTILITIES CONFINED TO EASEMENTS.

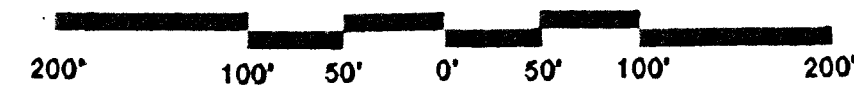
RESERVE 'B': SHALL PERMIT ALL USES IN RESERVE 'A' PLUS GAZEBOS, LAKES, AND PLAYGROUND EQUIPMENT.

RESERVE 'C': SHALL PERMIT LIGHTING, LANDSCAPING, WALKWAYS, DRAINAGE/DRAINAGE STRUCTURES, FENCING, GAZEBOS, PLAYGROUND EQUIPMENT, AND UTILITIES CONFINED TO EASEMENTS.
5. PROPOSED PAD ELEVATIONS, AS APPLICABLE, SHALL BE ESTABLISHED AT THE TIME OF PLATTING.

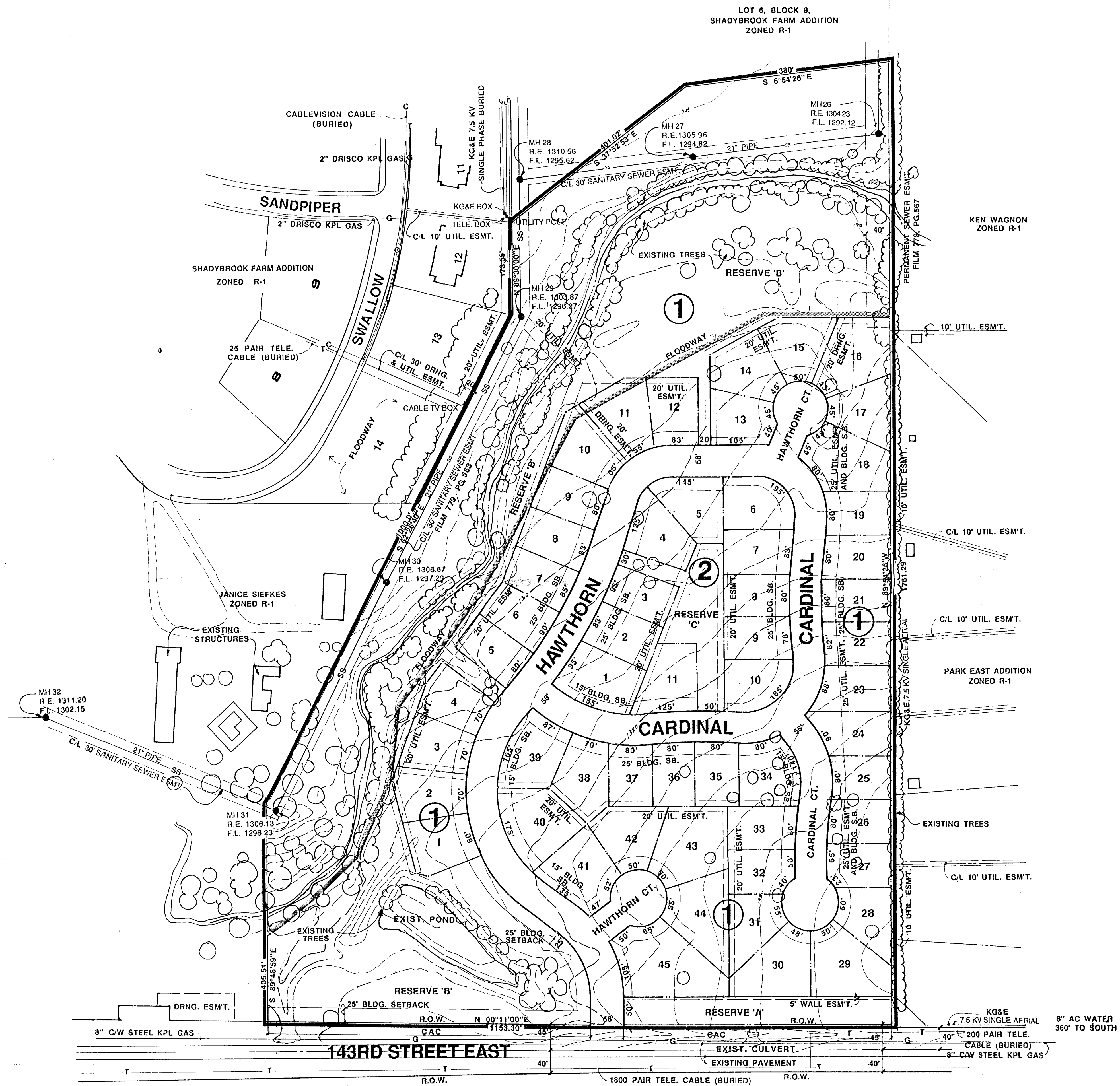
NOTE: EXISTING PROPERTY ZONED R-1, TO BE REZONED AA BY VIRTUE OF FINAL PLAT.



CONTOUR INTERVAL = 2'



SCALE : 1" = 100'



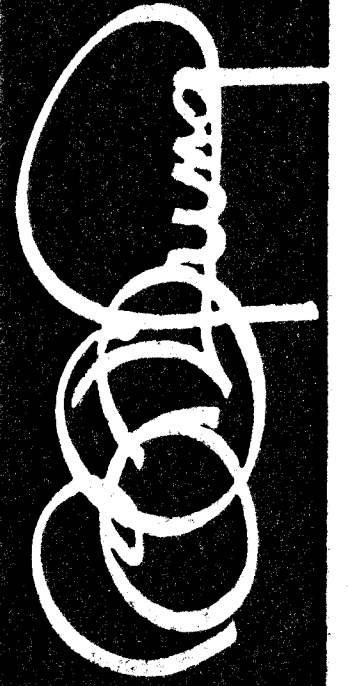
TOTAL SQ. FT. = 1547761.4411

TOTAL ACRES = 35.53

AETHA TRUST  
IN C/O W.E. LUSK JR.  
TRUSTEE

ZONED R-1

PRELIMINARY PLAT  
**SHADYBROOK MEADOW ADDITION**



**BILL G. YUNG DESIGN**  
4912 E. 29TH STREET NORTH, WICHITA, KS 67220  
316-683-5567

date: JUNE 30, 1989  
rev.

sheet title: PRELIMINARY PLAT

project: SHADYBROOK MEADOW

sheet 1 of 1