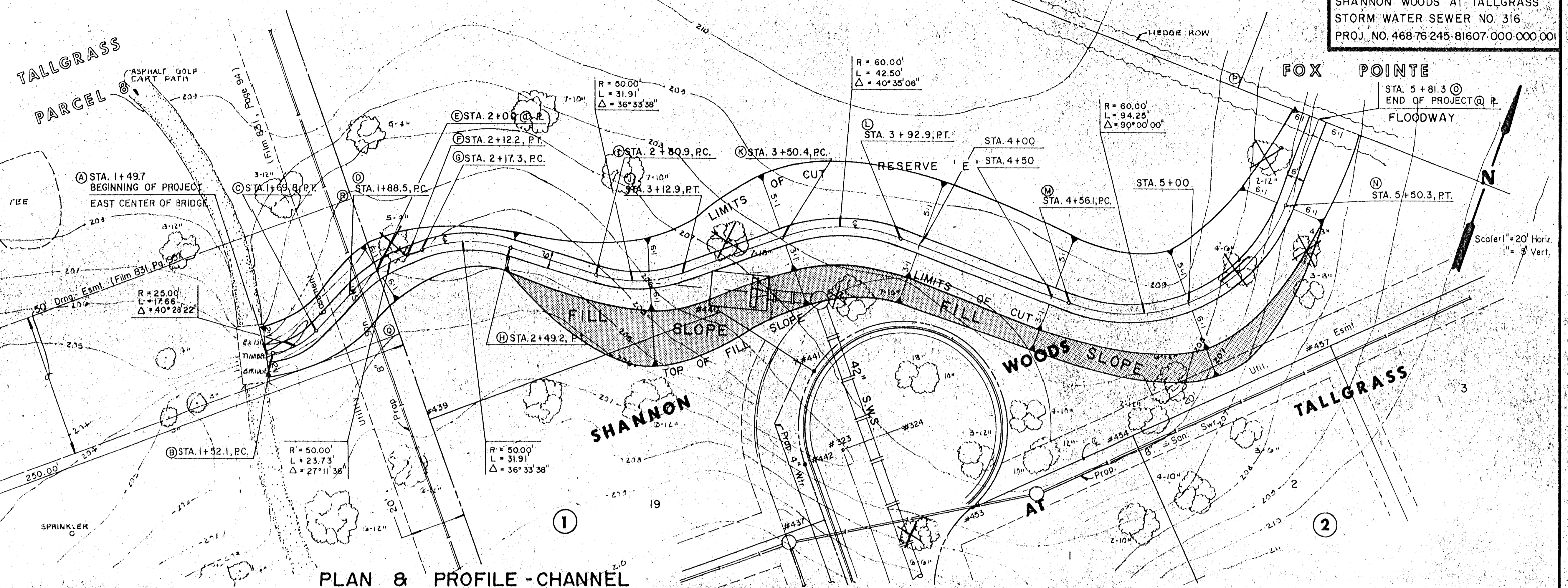


COORDINATE SYSTEM AS USED BY MKEC ON FINAL PLAT

SHANNON WOODS AT TALLGRASS

POINT #	NORTH COORDINATE	EAST COORDINATE	COMMENTS
323	10981.9267	7717.3256	Shannon Woods Circle
324	10997.1669	7734.5516	Cul-de-Sac
437	10957.2563	7720.4593	Lot Corner
439	10937.6584	7577.5751	Lot Corner
440	11010.5466	7659.9602	Lot Corner
441	11003.6995	7698.1328	Lot Corner
442	10972.6500	7706.8402	Lot Corner
453	10979.5410	7767.0835	Lot Corner
454	11024.6159	7810.7410	Lot Corner
457	11079.8925	7864.2795	Lot Corner
(A)	10937.2589	7515.3276	Sta 1+49.7, Beginning
(B)	10938.3828	7517.4219	Sta 1+52.1, P.C.
(C)	10951.3271	7528.8914	Sta 1+69.8, P.T.
(D)	10968.7648	7535.6925	Sta 1+88.5, P.C.
(E)	10978.9196	7541.0703	Sta 2+00, P.C.
(F)	10988.0445	7549.1435	Sta 2+12.2, P.T.
(G)	10991.4244	7552.9642	Sta 2+17.3, P.C.
(H)	11003.7910	7581.7901	Sta 2+49.2, P.T.
(I)	11006.5227	7613.3990	Sta 2+80.9, P.C.
(J)	11018.8892	7642.2249	Sta 3+12.9, P.T.
(K)	11043.7638	7670.3405	Sta 3+50.4, P.C.
(L)	11058.8188	7709.1395	Sta 3+92.9, P.T.

Wilderness Detention Reservoir  
 Normal Pool 202.00 Ft. (Wichita)  
 100-Yr. Design W.S.E. 206.80 Ft. (Wichita)  
 19-May 1989 - 201.84 Ft. (Wichita)



PLAN & PROFILE - CHANNEL

