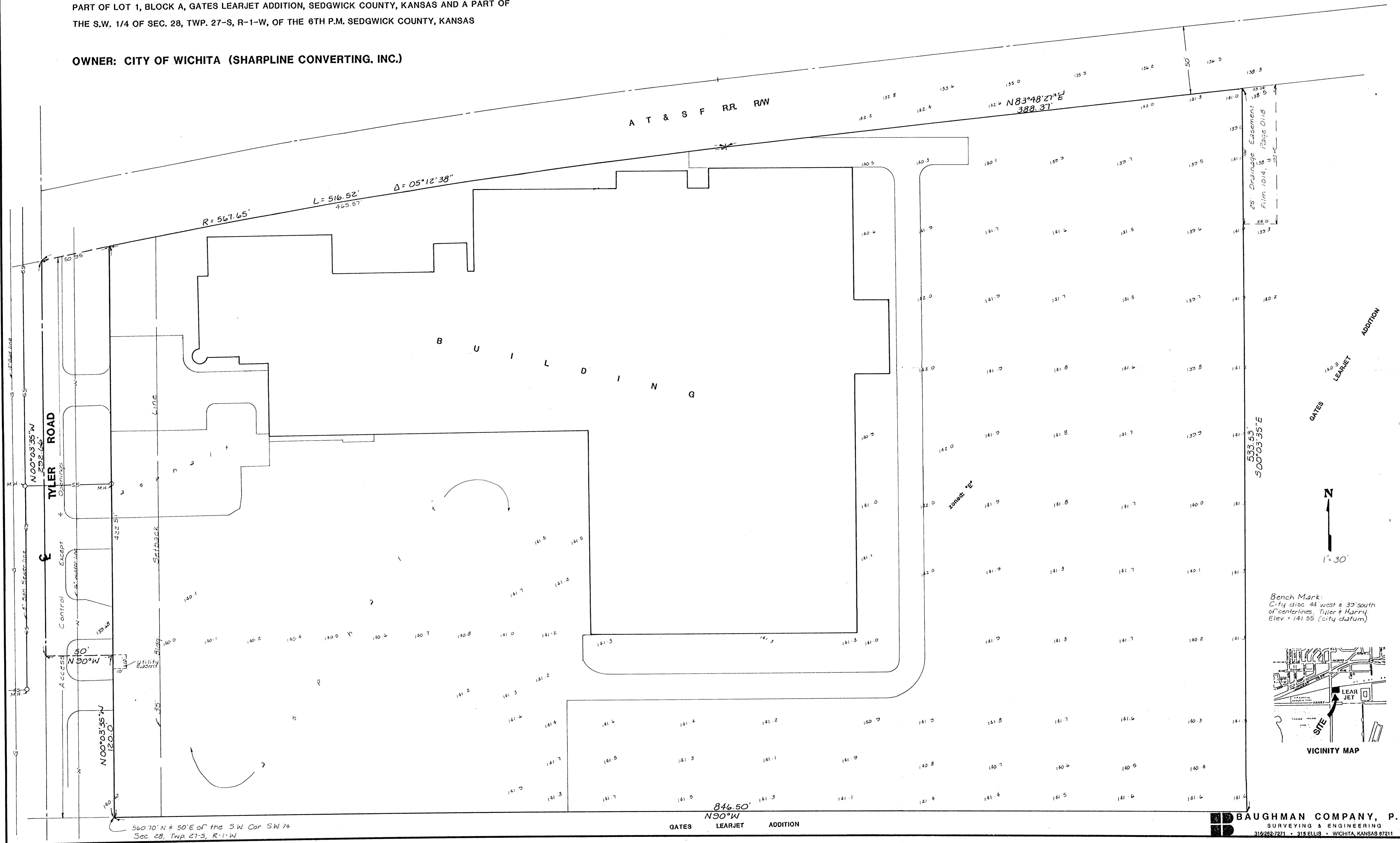


SKETCH PLAT

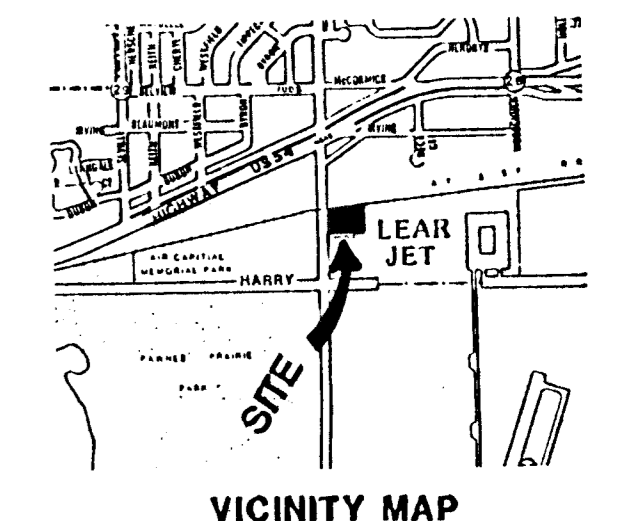
SHARPLINE FIRST ADDITION

PART OF LOT 1, BLOCK A, GATES LEARJET ADDITION, SEDGWICK COUNTY, KANSAS AND A PART OF THE S.W. 1/4 OF SEC. 28, TWP. 27-S, R-1-W, OF THE 6TH P.M. SEDGWICK COUNTY, KANSAS

OWNER: CITY OF WICHITA (SHARPLINE CONVERTING, INC.)



Bench Mark:  
City disc 44 west & 39 south  
of centerlines, Tyler & Harry.  
Elev = 141.55 (city datum)



VICINITY MAP

560.70' N & 50' E of the SW Cor SW 1/4  
Sec. 28, Twp. 27-S, R-1-W

846.50'  
N 90° W  
GATES LEARJET ADDITION