

Drainage Plan of HONG'S VILLAGE

SEDGWICK COUNTY, KANSAS

Legal Description

Tract 1-W of Survey of the West half of the West half of the Northwest Quarter of the Northeast Quarter, Section 6, T28S, R2E, of the 6th P.M., Kansas, said tract containing 10.12 acres, more or less.

OWNERS

Dean L. Bussart
Rebecca P. Bussart
5050 E. Central
67208

Gary D. Bussart
Terry L. Bussart
Route 2
Wichita, Kansas
67208

Il Sik Hong
Deborah K. Hong
233 N. Ash
67214

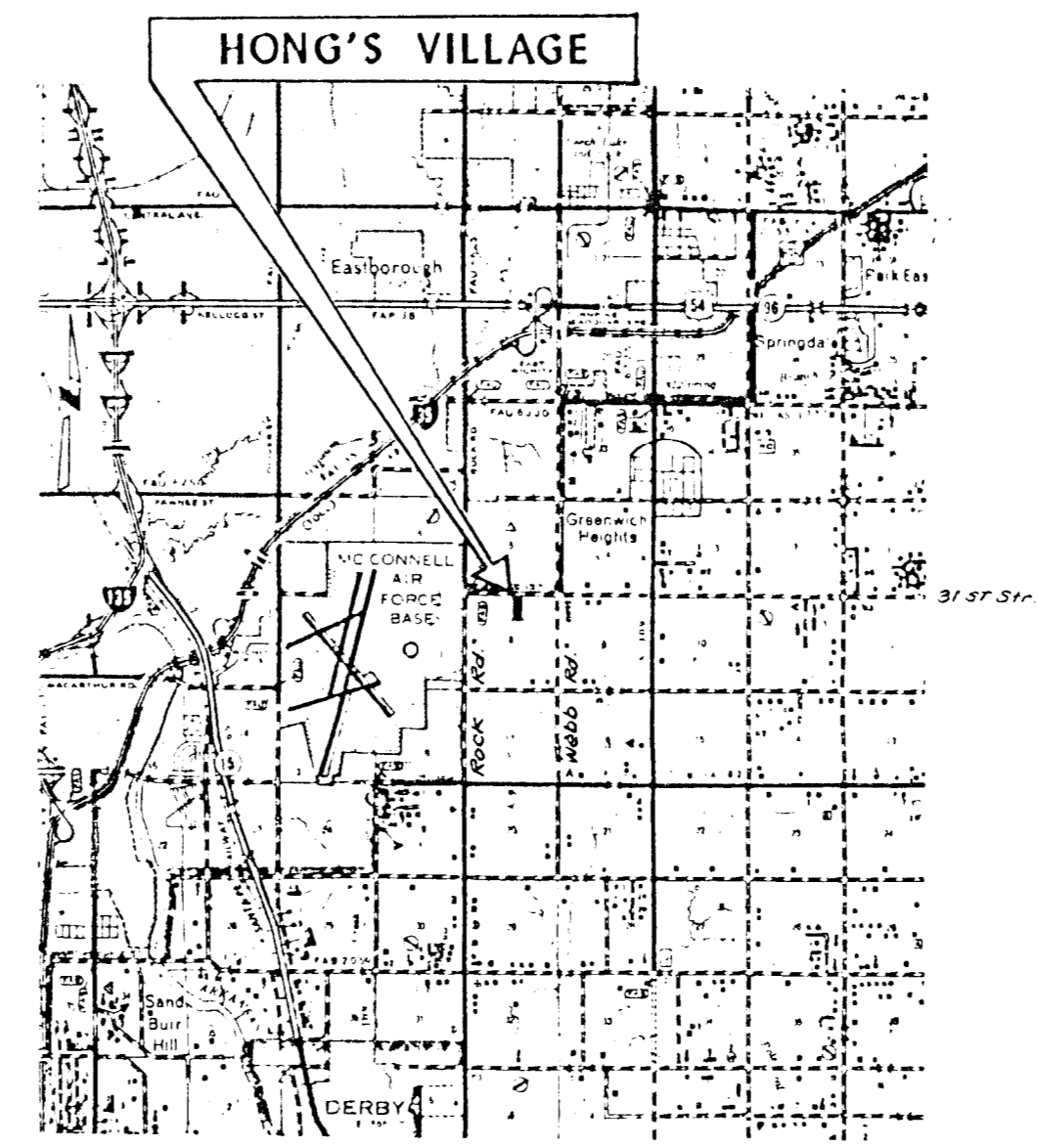
DEVELOPER

Il Sik Hong
Deborah K. Hong
233 N. Ash
67214

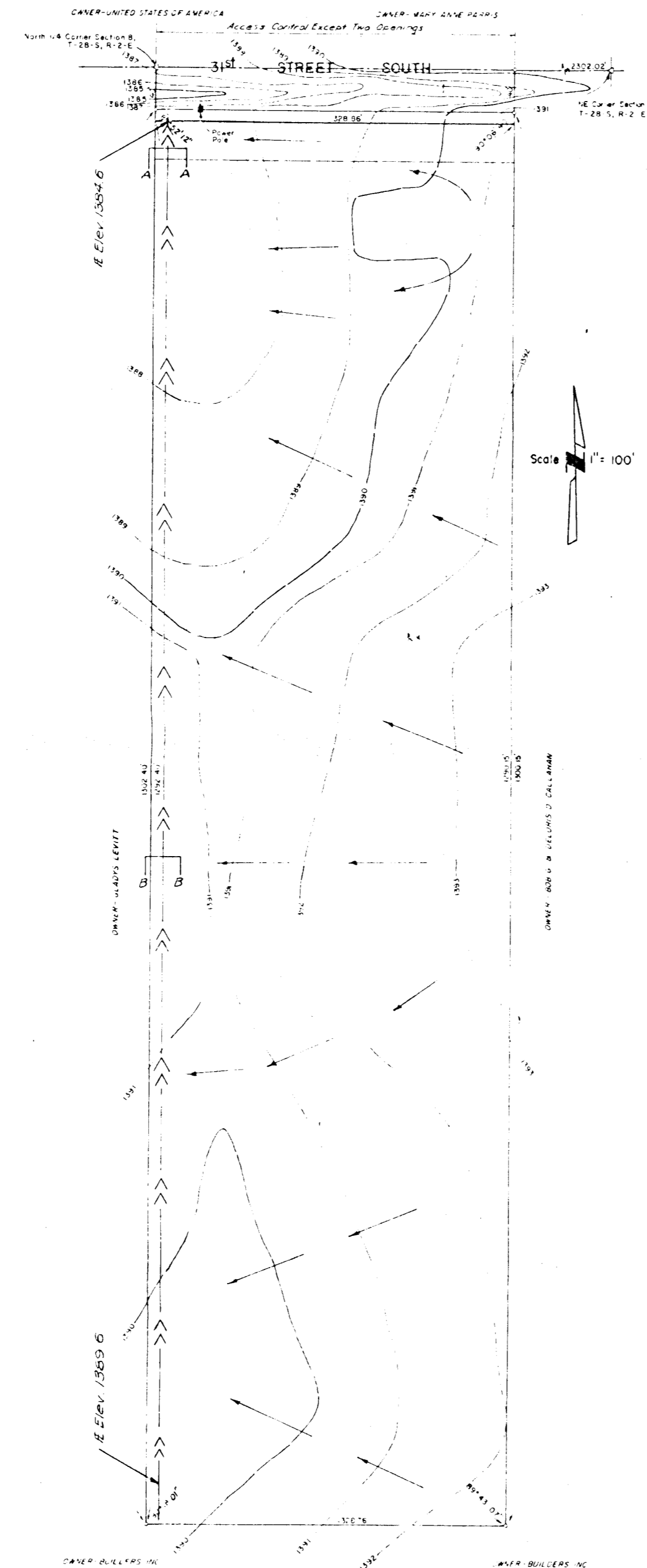
BENCH MARK

Railroad Spike in
Highline Pole
10' S and 40' E of
1/4 Corner
Elevation 1388.81

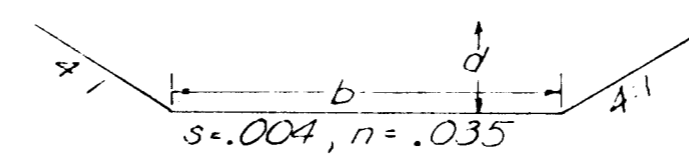
TOPOGRAPHY
December, 1983



VICINITY MAP



TYPICAL SECTION OF DRAINAGE CHANNEL



SECTION A-A
 $b = 10', d = 0.9', Q = 19.3 \text{ cfs.}$

SECTION B-B
 $b = 6', d = 1.2', Q = 27.6 \text{ cfs.}$