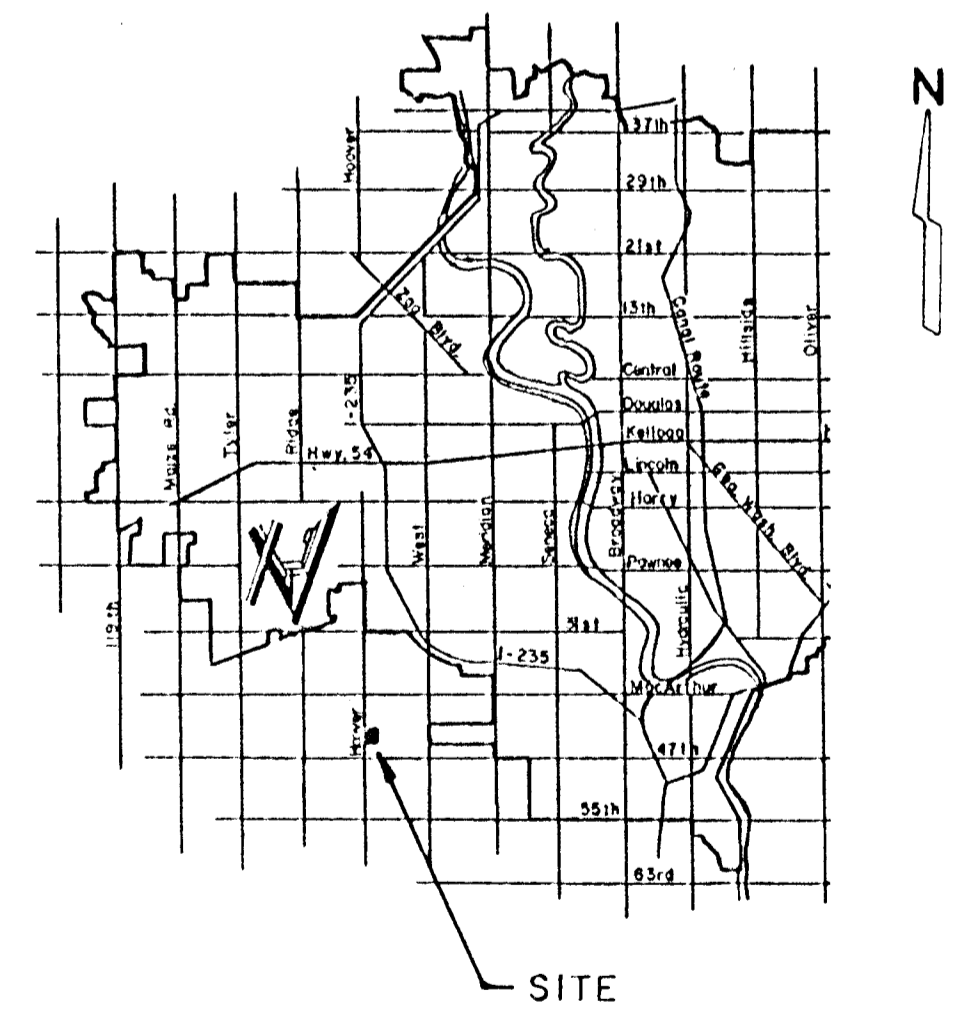
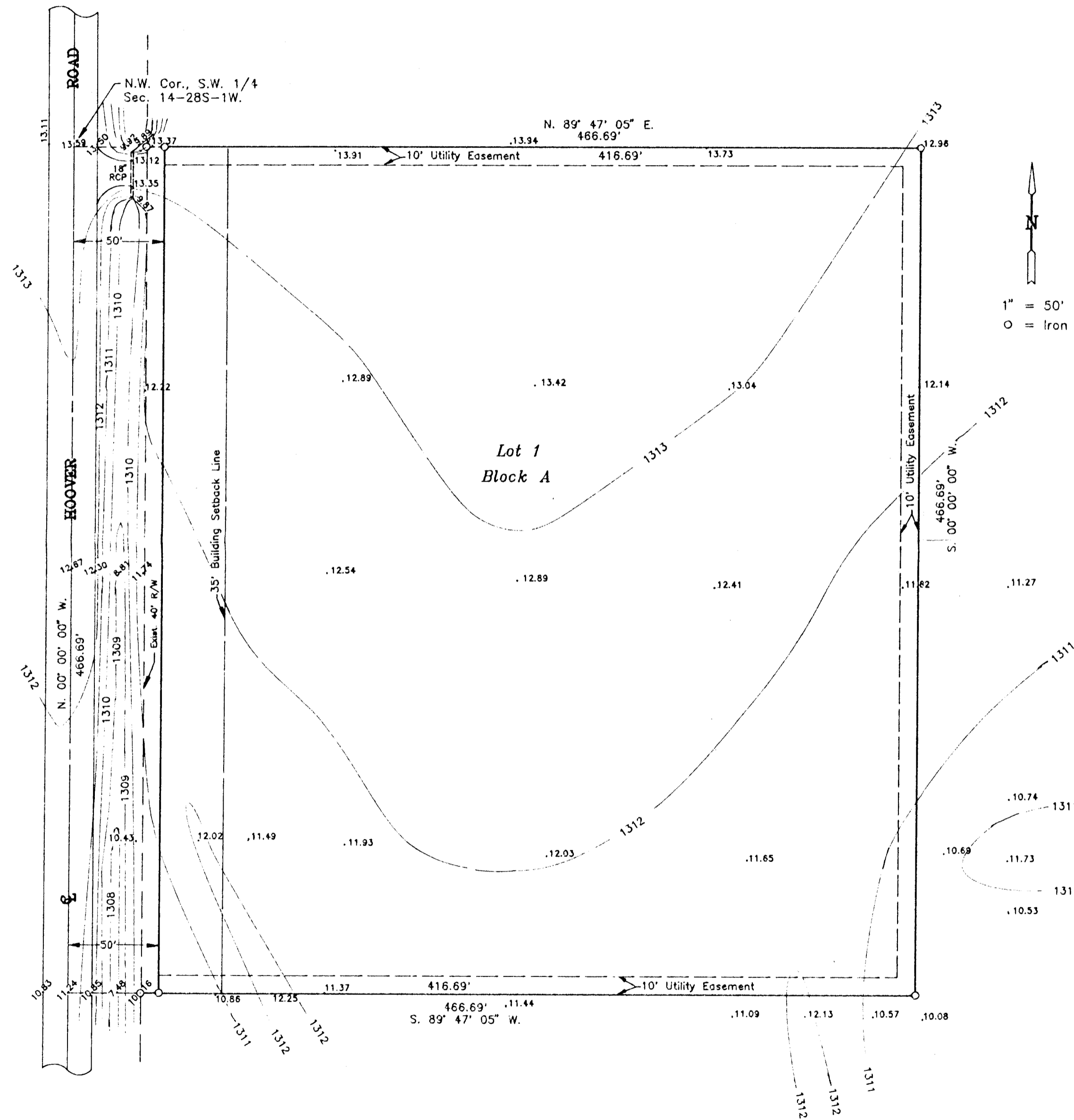


PRELIMINARY PLAT
of
HOPE COMMUNITY BAPTIST CHURCH ADDITION
SEDGWICK COUNTY, KANSAS



NOTE:
Add 1300.00 to spot elevations
to convert to Mean Sea Level.

BENCHMARK
RR Spike in UP 100' N. of
NE Cor Oatville School on
West side of Hoover Road.
Elev. = 1318.09 M.S.L.

LEGAL DESCRIPTION
The N. 466.69' of the W. 466.69'
of the SW 1/4 of Sec. 14, T.28S.,
R.1W. of the 6th P.M., Sedgwick
County, Kansas.

MOEHRING & ASSOCIATES
CONSULTING ENGINEERS
WICHITA
October 26, 1993