

DRAINAGE CONCEPT 6/5/95

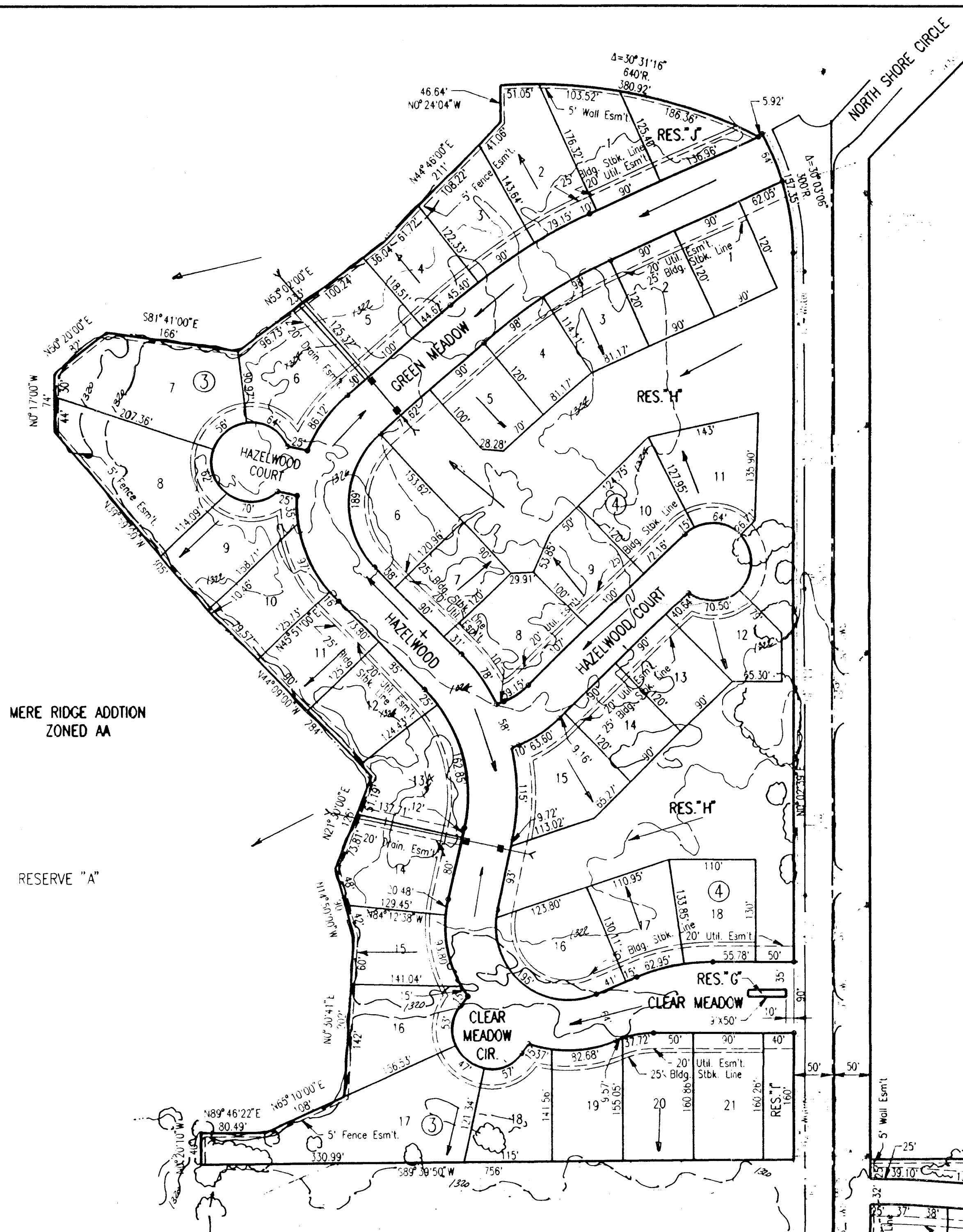
# HORSESHOE LAKE (REPLAT OF NORTH LAKES ADD.)

PREPARED FOR: GRANDVIEW INC.  
8100 E. 22ND ST. NORTH, BLDG. 1000  
WICHITA, KANSAS 67226

ENGINEER: PROFESSIONAL ENGINEERING CONSULTANTS, P.A.  
303 S. TOPEKA  
WICHITA, KANSAS 67207

NOTES: SEE HORSESHOE LAKE C.U.P. (DP-75) FOR ADDITIONAL REQUIREMENTS  
ALL RESERVES SHALL BE OWNED AND MAINTAINED BY A HOMEOWNERS ASSOCIATION  
RESERVES A, B, C, E, G, H, I AND J SHALL PERMIT ENTRY MONUMENTS, LANDSCAPING, WALKS, AND UTILITIES CONFINED TO EASEMENTS. RESERVES A, C, D, E AND J SHALL ALSO PERMIT WALLS CONFINED TO EASEMENTS.  
RESERVES D, F AND H SHALL PERMIT DRAINAGE, DRAINAGE STRUCTURES, LAKES, LANDSCAPING, WALKS, RECREATIONAL USE, UTILITIES AND WALLS CONFINED TO EASEMENTS.

**LEGEND**  
→ Direction of Flow  
— SHS Inlet & Pipe

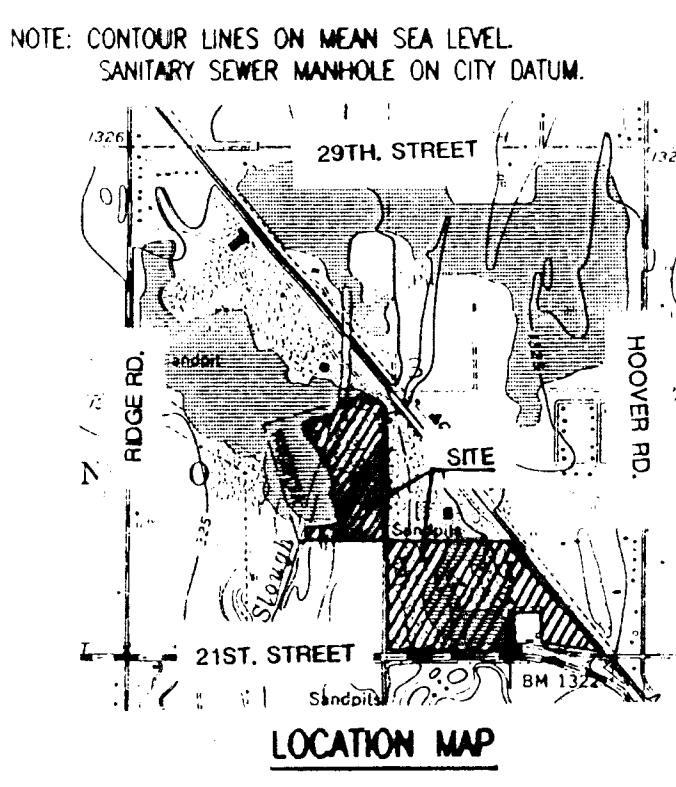


MERE RIDGE ADDITION  
ZONED AA

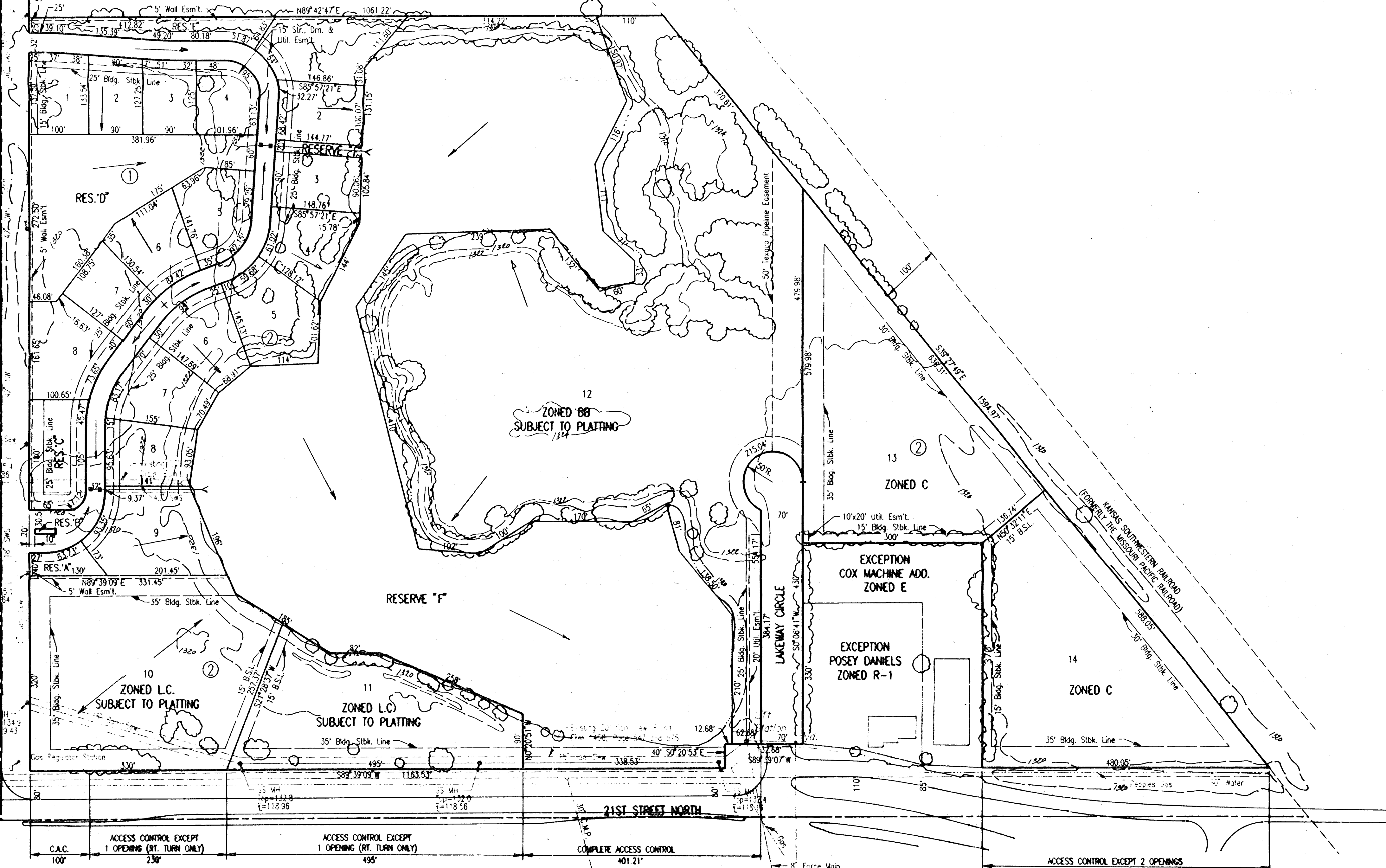
RESERVE "A"

RITCHIE CORPORATION  
ZONED "E" LIGHT IND.  
UNPLATTED

SCALE: 1"=100'  
JUNE, 1995  
TOPD FEBRUARY, 1986  
A.C. = ACCESS CONTROL  
C.A.C. = COMPLETE ACCESS CONTROL  
B.S.L. = BUILDING SETBACK LINE  
BENCH MARK: CITY OF WICHITA BENCH MARK DISC, 30 FEET NORTH AND 37 FEET EAST OF THE INTERSECTION OF THE CENTERLINES OF HOOPER AND 21ST ST. W.  
ELEV.=139.991 CITY DATUM  
ELEV.=1327.17 M.S.L.



LAKE RIDGE 2ND ADDITION  
ZONED AA



ZONED BB  
SUBJECT TO PLATTING

ZONED C

EXCEPTION  
COX MACHINE ADD.  
ZONED E

EXCEPTION  
POSEY DANIELS  
ZONED R-1

ZONED C

ZONED L.C.  
SUBJECT TO PLATTING

ZONED L.C.  
SUBJECT TO PLATTING

ACCESS CONTROL EXCEPT 1 OPENING (RT. TURN ONLY) 100' 230' 495' 401.21'  
COMPLETE ACCESS CONTROL