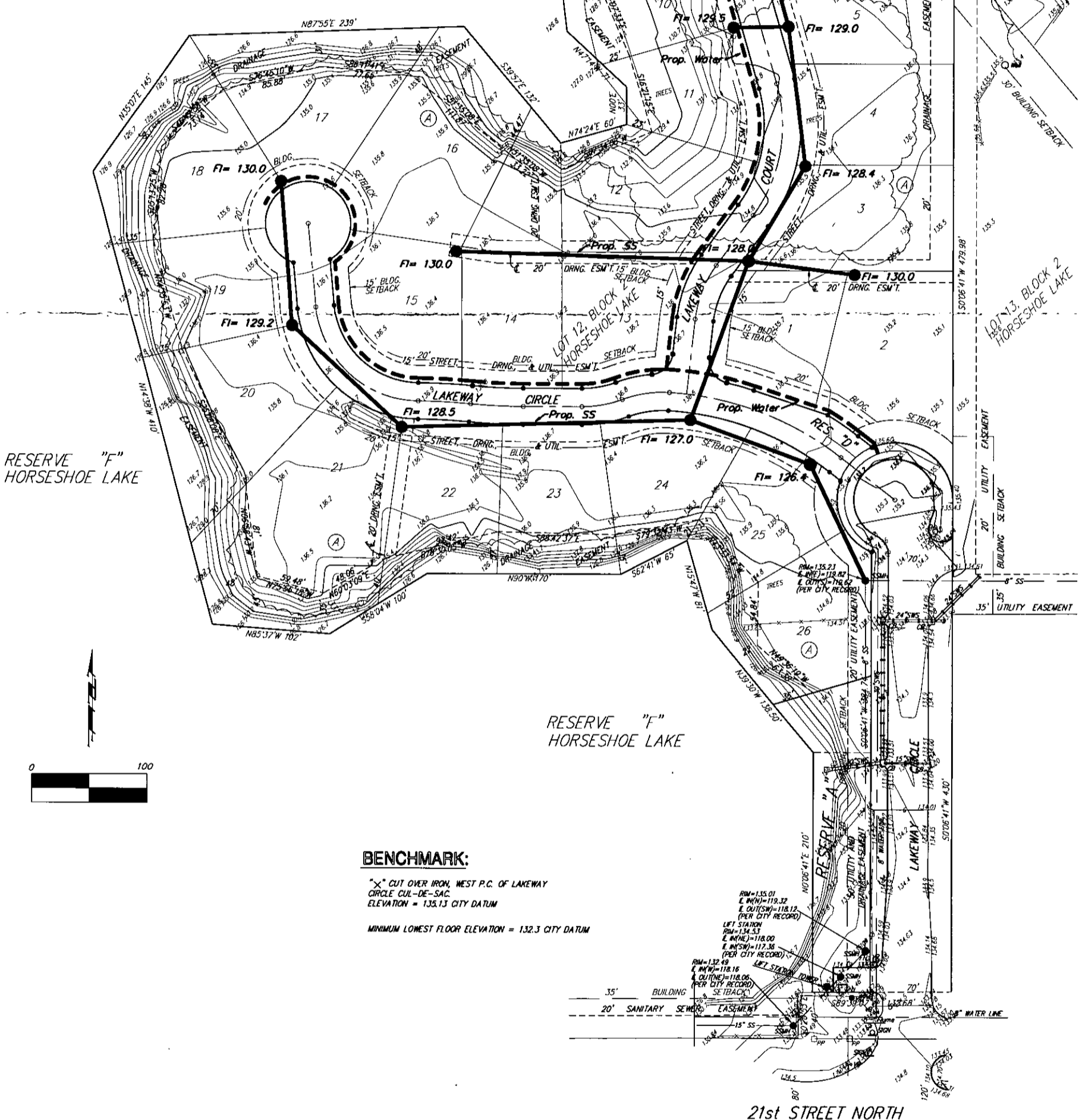


Utility Plan
HORSESHOE LAKE 2ND ADDITION
 WICHITA, SEDGWICK COUNTY, KANSAS

MINIMUM BUILDING PAD ELEVATION FOR LOWEST OPENING TO THE STRUCTURES			
LOT	BLOCK	ELEVATION	
		CITY DATUM	MSL
1-26	A	136.0	1323.4

RESERVE "F"
HORSESHOE LAKE



BENCHMARK:
 "X" CUT OVER IRON, WEST P.C. OF LAKEWAY
 CIRCLE CUL-DE-SAC
 ELEVATION = 135.13 CITY DATUM
 MINIMUM LOWEST FLOOR ELEVATION = 132.3 CITY DATUM

BAUGHMAN COMPANY P. A.
 ENGINEERING, SURVEYING, & PLANNING
 (316)-282-7271 • 315 ELLIS • WICHITA, KANSAS 67211