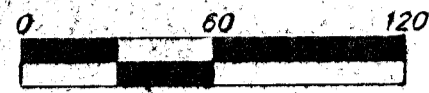


# PRELIMINARY PLAT HORSESHOE LAKE 2ND ADDITION WICHITA, SEDGWICK COUNTY, KANSAS



MINIMUM BUILDING PAD ELEVATION FOR LOWEST OPENING TO THE STRUCTURES			
LOT	BLOCK	ELEVATION	
		CITY DATUM	MSL
1-28	A	1,38.0	1,323.4

**LEGEND:**

- = 3/4" PEG IRON (FOUND)
- = 1/2" IRON (FOUND)
- X = CROSS (SET)
- EB = Electric Box
- FH = Fire Hydrant
- WM = Gas Meter
- GY = Gas Anchor
- PP = Power Pole
- SSM = Sanitary Sewer Manhole
- SSMW = Stormwater Sewer Manhole
- WH = Cased Well
- WV = Water Valve

**LEGAL DESCRIPTION:**

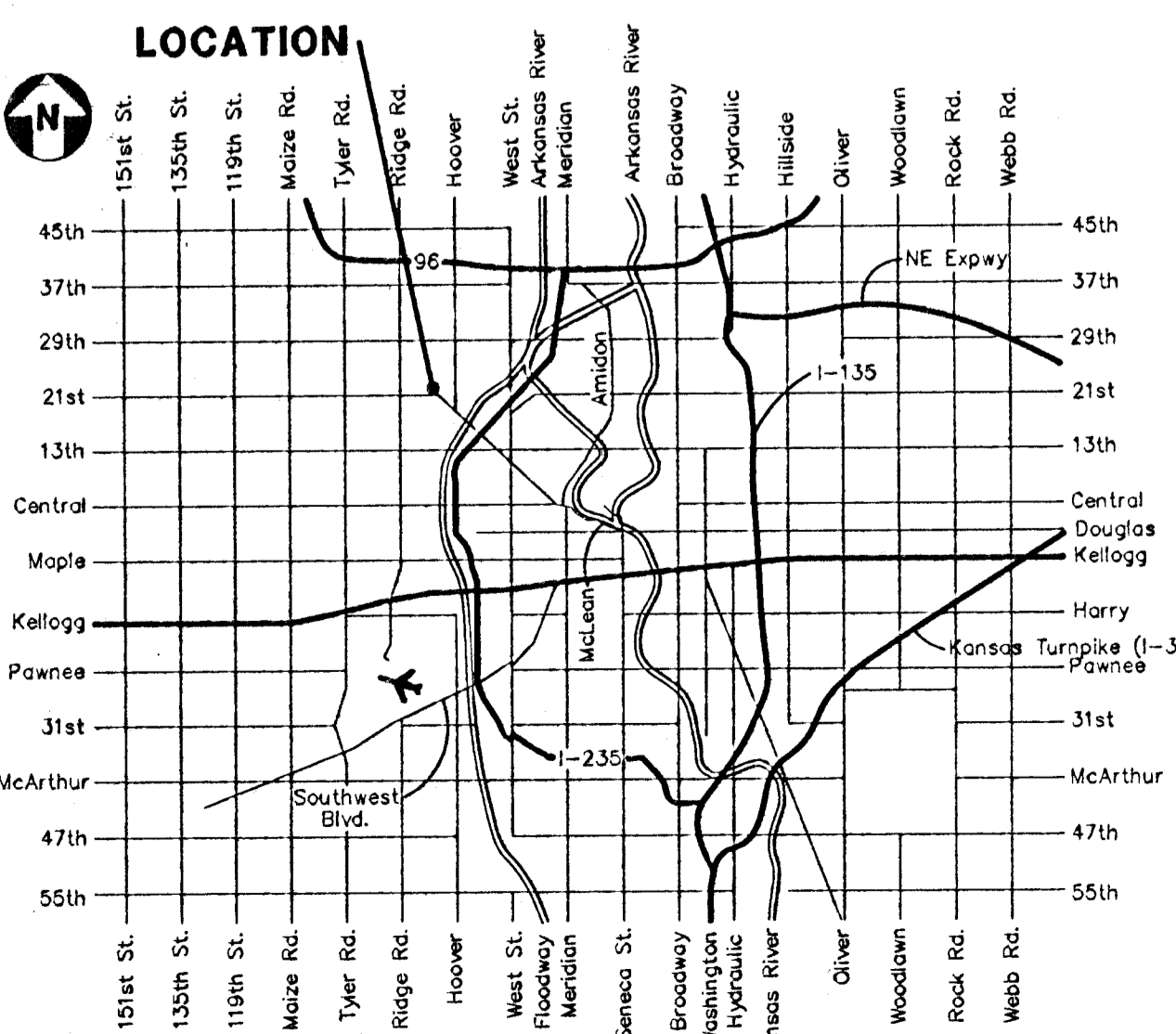
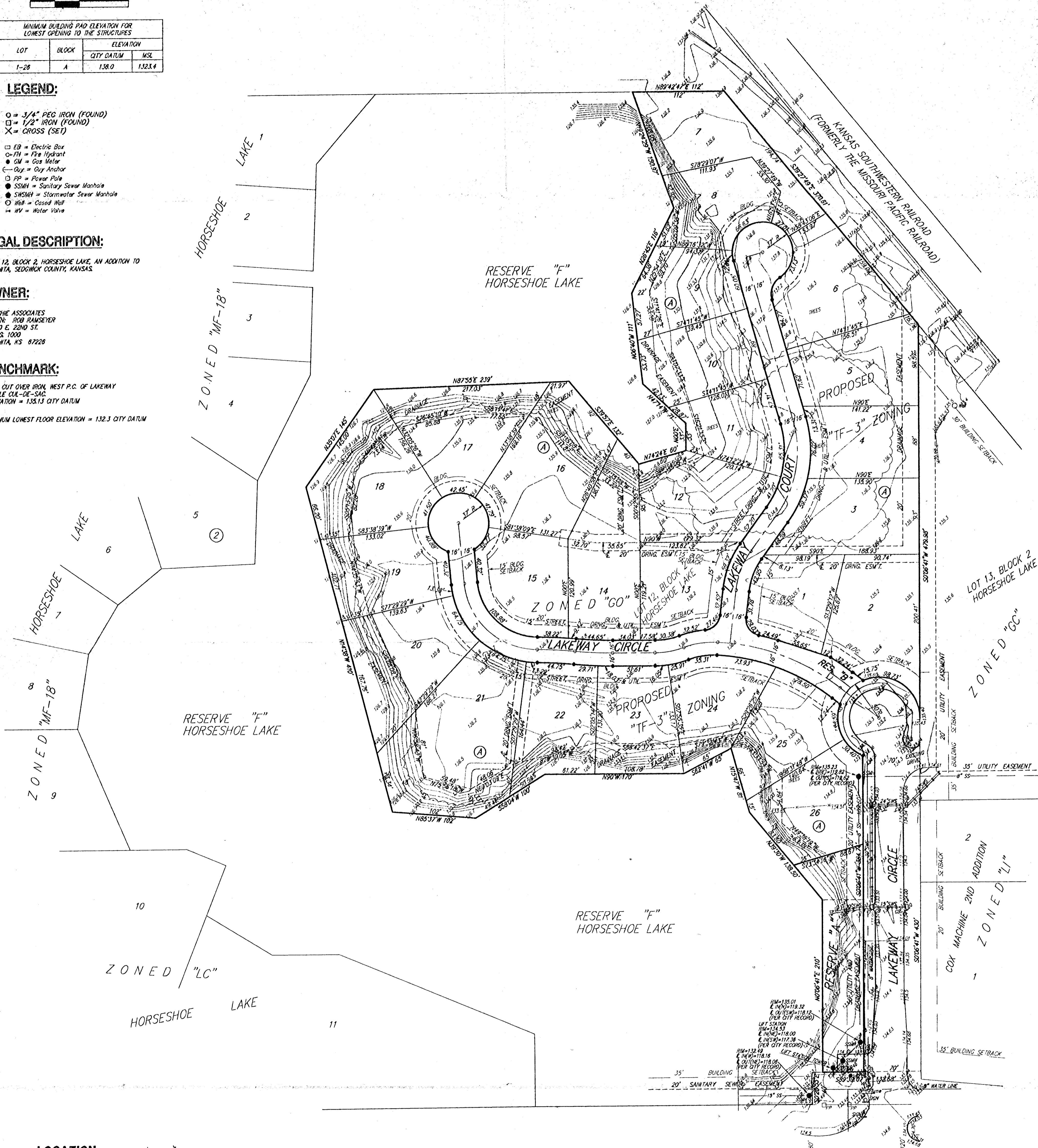
LOT 12, BLOCK 2, HORSESHOE LAKE, AN ADDITION TO WICHITA, SEDGWICK COUNTY, KANSAS.

**OWNER:**

RITCHE ASSOCIATES  
ATTN: BOB RAMSEYER  
8100 E. 23RD ST.  
BLOC. 1000  
WICHITA, KS 67228

**BENCHMARK:**

★ OUT OVER IRON, WEST P.C. OF LAKEWAY CIRCLE, C&G 26-26-216  
ELEVATION = 1,351.13 CITY DATUM  
MINIMUM LOWEST FLOOR ELEVATION = 1,323.3 CITY DATUM



VICINITY MAP

21st STREET NORTH