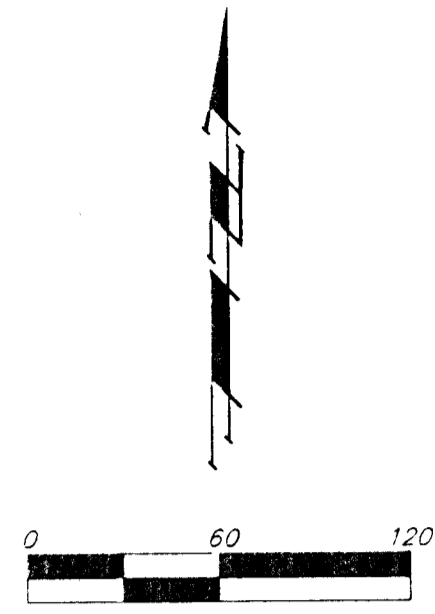


DRAINAGE CONCEPT

HORSESHOE LAKE 2ND ADDITION

WICHITA, SEDGWICK COUNTY, KANSAS



| MINIMUM BUILDING PAD ELEVATION FOR LOWEST OPENING TO THE STRUCTURES | | | |
|---|-------|------------|---------|
| LOT | BLOCK | ELEVATION | |
| | | CITY DATUM | MSL |
| 1-26 | A | 136.0 | 132.3.4 |

LEGEND:

- = 3/4" PEC IRON (FOUND)
- = 1/2" IRON (FOUND)
- X = CROSS (SET)
- EB = Electric Box
- FH = Fire Hydrant
- GM = Gas Meter
- GA = Guy Anchor
- PP = Power Pole
- SSMH = Sanitary Sewer Manhole
- SMSMH = Stormwater Sewer Manhole
- Well = Closed Well
- WV = Water Valve

LEGAL DESCRIPTION:

LOT 12, BLOCK 2, HORSESHOE LAKE, AN ADDITION TO WICHITA, SEDGWICK COUNTY, KANSAS.

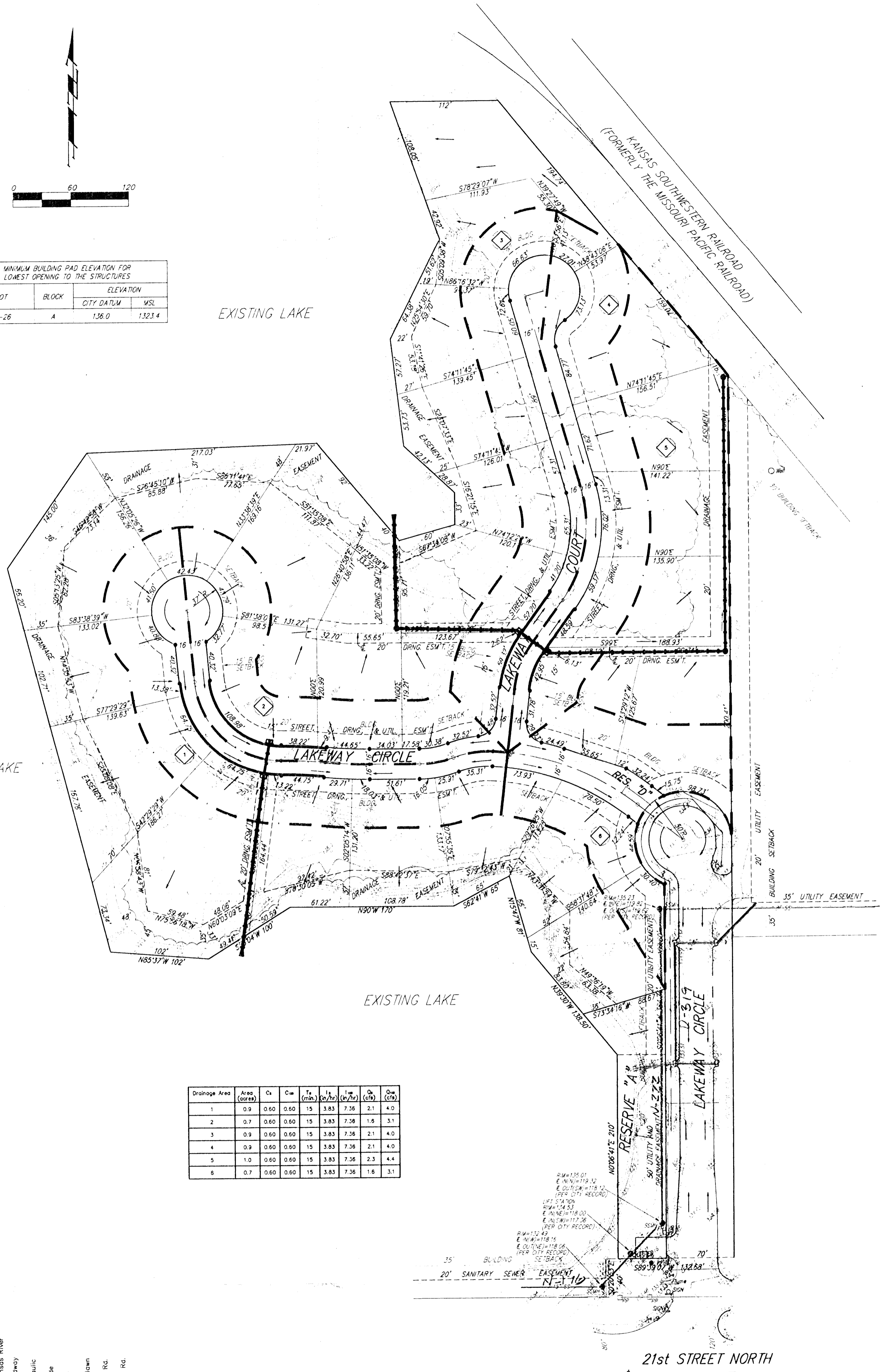
OWNER:

RITCHE ASSOCIATES
ATTN: BOB RAMSEYER
8100 E. 22ND ST.
BLDG. 1000
WICHITA, KS 67226

BENCHMARK:

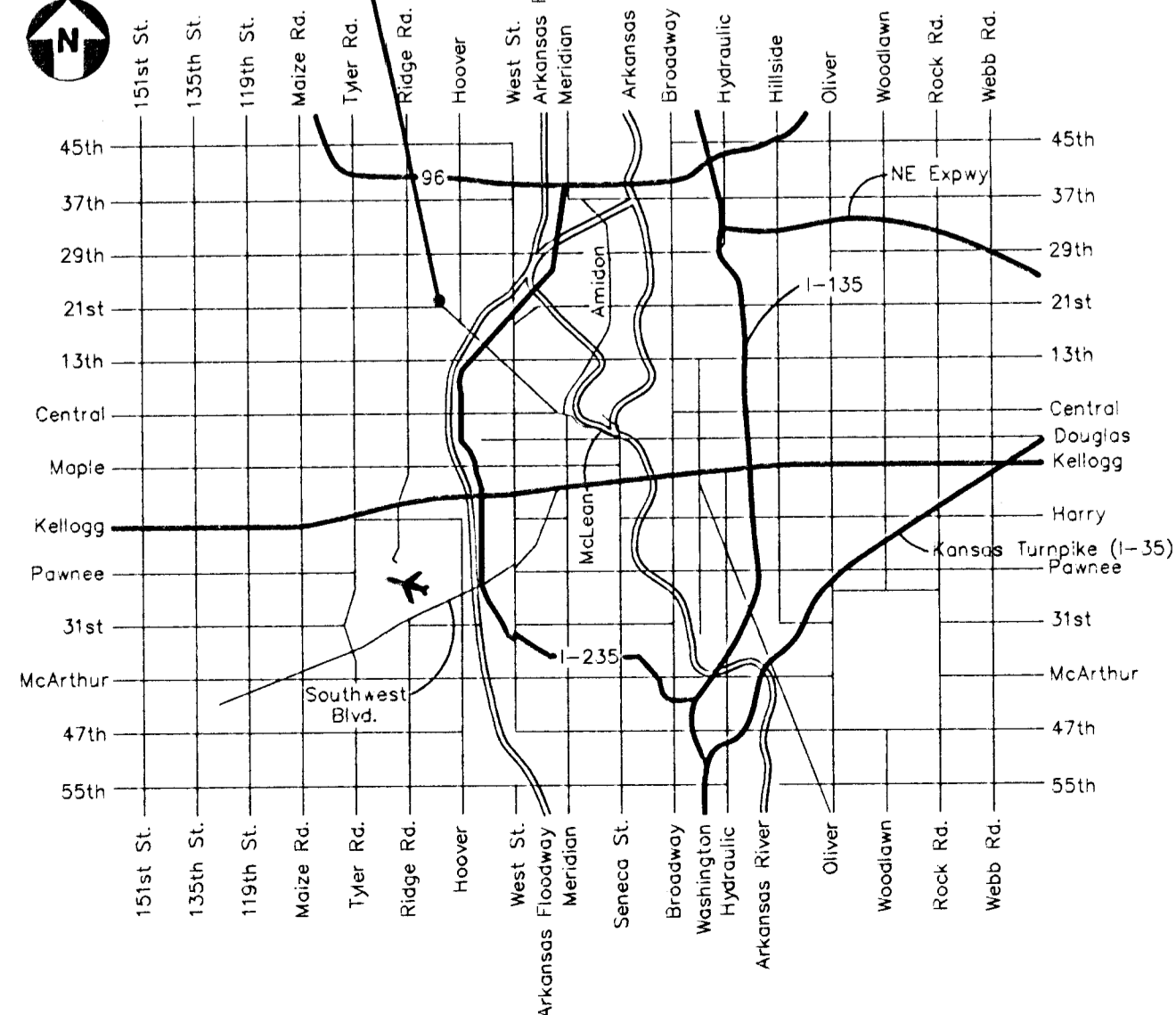
X CUT OVER IRON, WEST P.C. OF LAKEWAY CIRCLE
CIRCLE CUL-DE-SAC
ELEVATION = 135.13 CITY DATUM

MINIMUM LOWEST FLOOR ELEVATION = 132.3 CITY DATUM



| Drainage Area | Area (acres) | C _i | C _w | T _a (min) | T _w (hr) | Q ₁ (cfs) | Q ₂ (cfs) | Q ₃ (cfs) |
|---------------|--------------|----------------|----------------|----------------------|---------------------|----------------------|----------------------|----------------------|
| 1 | 0.9 | 0.60 | 0.60 | 15 | 3.83 | 7.36 | 2.1 | 4.0 |
| 2 | 0.7 | 0.60 | 0.60 | 15 | 3.83 | 7.36 | 1.6 | 3.1 |
| 3 | 0.9 | 0.60 | 0.60 | 15 | 3.83 | 7.36 | 2.1 | 4.0 |
| 4 | 0.9 | 0.60 | 0.60 | 15 | 3.83 | 7.36 | 2.1 | 4.0 |
| 5 | 1.0 | 0.60 | 0.60 | 15 | 3.83 | 7.36 | 2.3 | 4.4 |
| 6 | 0.7 | 0.60 | 0.60 | 15 | 3.83 | 7.36 | 1.6 | 3.1 |

LOCATION



VICINITY MAP