

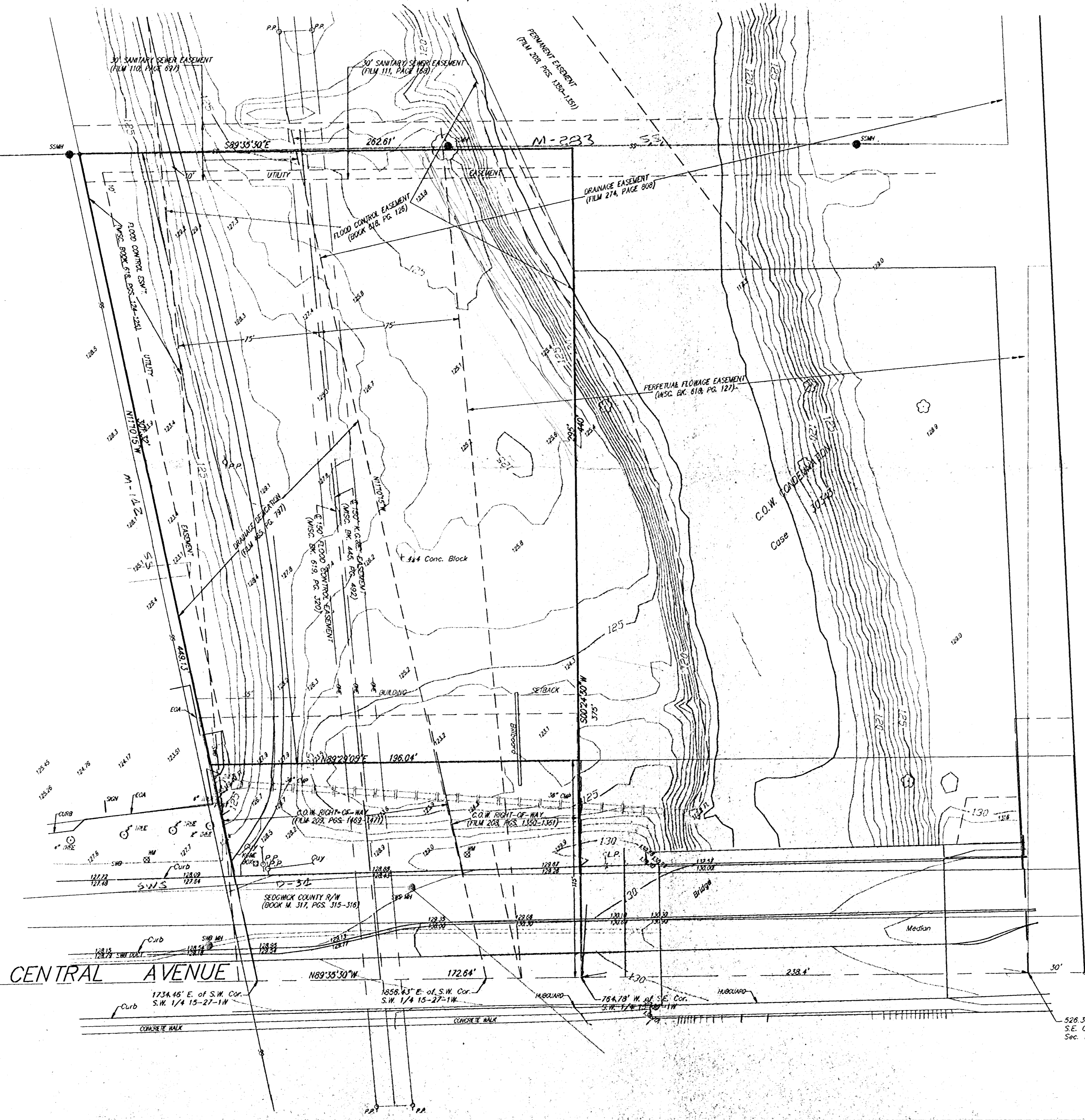
SKETCH PLAT HOSKINSON ADDITION SEDGWICK COUNTY, KANSAS



Scale: 1" = 30'

Silver Springs Addition

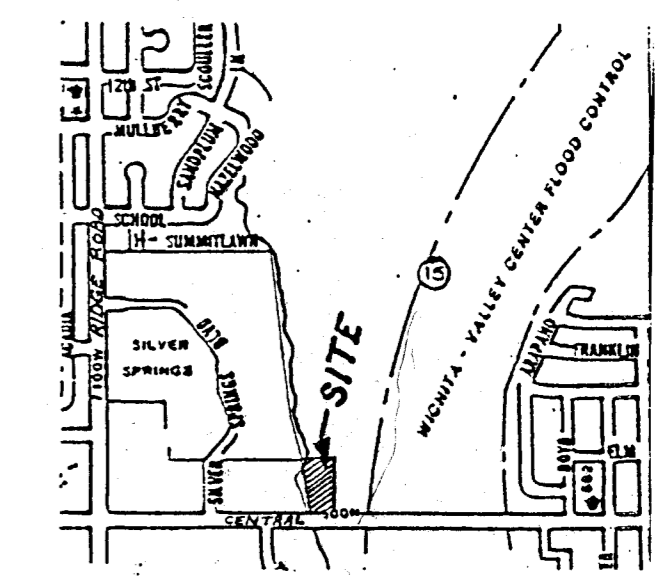
Robert Hays Addition



OWNER:
CENTRAL SAND INC.
DICK & VERDA HOSKINSON
990 N. WESTLINK
WICHITA, KS 67212

LEGAL DESCRIPTION:
A TRACT IN THE S.W. 1/4 OF SEC. 15, TWP. 27-S, R-1-W OF THE 6TH P.M., SEDGWICK COUNTY, KANSAS, DESCRIBED AS BEGINNING AT A POINT 764.78 FEET WEST OF THE S.E. CORNER THEREOF; THENCE N89°35'30"W ALONG THE SOUTH LINE OF SAID S.W. 1/4, 172.64 FEET TO A POINT 1734.46 FEET EAST OF THE S.W. CORNER OF SAID S.W. 1/4; THENCE N11°10'15"W, 449.13 FEET; THENCE S89°35'30"E, 262.61 FEET TO A POINT NORTH OF BEGINNING AS MEASURED AT RIGHT ANGLES TO THE SOUTH LINE OF SAID S.W. 1/4; THENCE S00°24'30"W, 440 FEET TO BEGINNING EXCEPT THE SOUTH 115 FEET DEEDED FOR STREET.

BENCHMARK:
DISC ON N.E. END OF BRIDGE OVER BIG SLOUGH ON CENTRAL AVENUE
ELEV. = 1317.50 M.S.L. (130.10 CITY DATUM)



VICINITY MAP

S.W. COR. S.W. 1/4
SEC. 15, 127S. 11W

S.E. COR. S.W. 1/4
SEC. 15, 127S. 11W

526.58' W. of
S.E. Corner S.W. 1/4
Sec. 15-27-11W

Revised: May 25, 1994
May 20, 1994

BAUGHMAN COMPANY P. A.
SURVEYING & ENGINEERING
318/262-7271 • 315 ELLIS • WICHITA, KANSAS 67211