

SKETCH PLAT SHADYBROOK COMMERCIAL ADDITION

WICHITA, SEDGWICK COUNTY, KANSAS

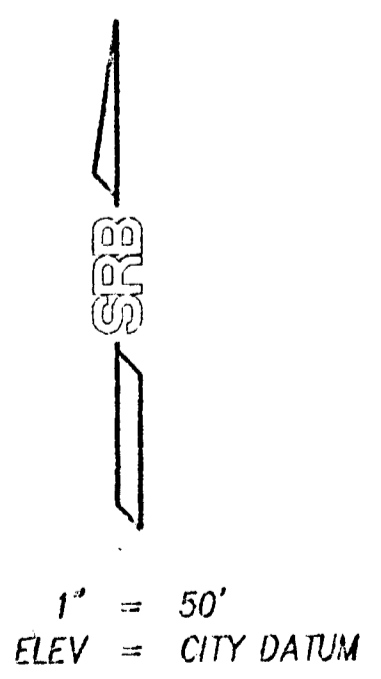
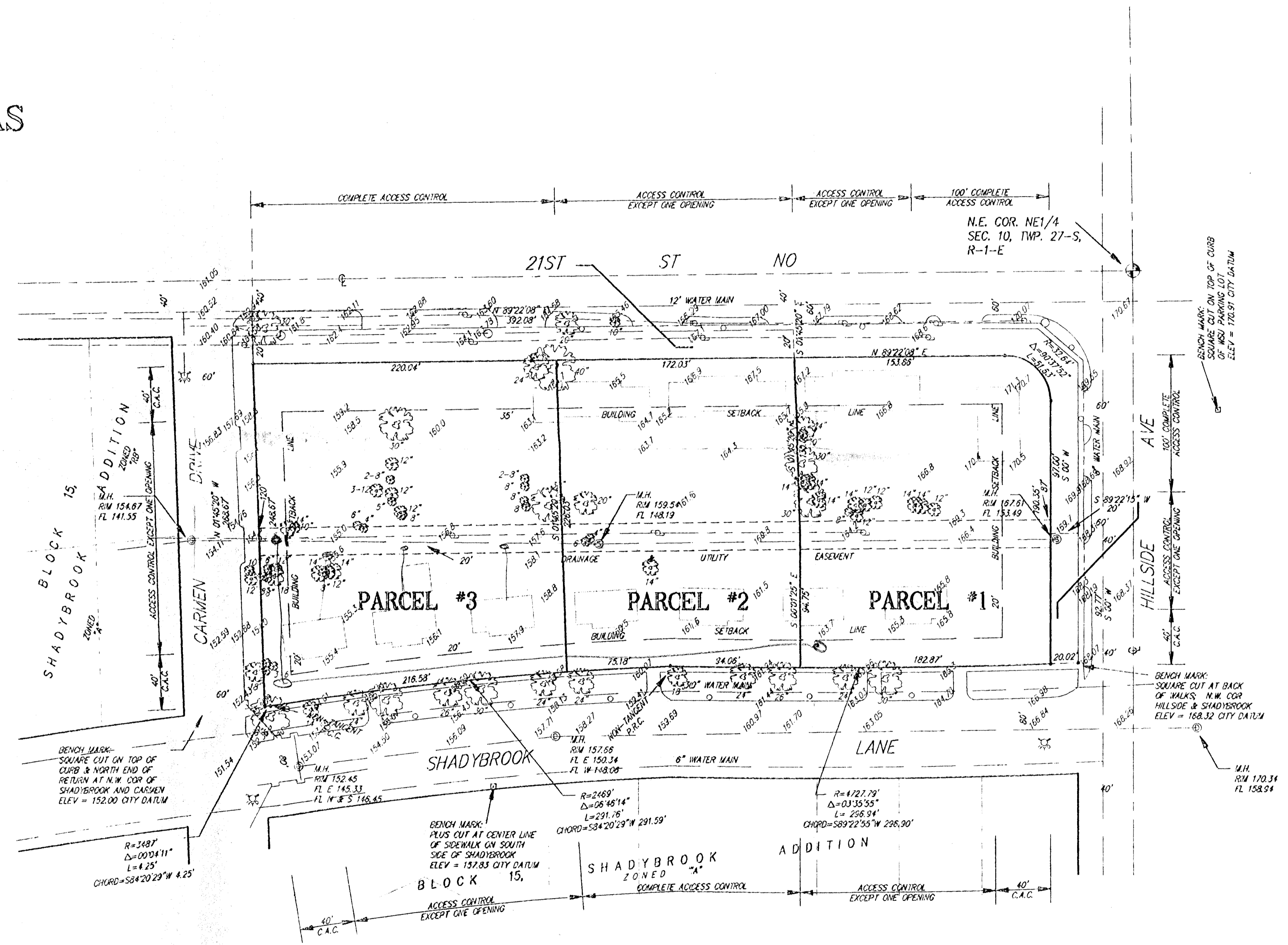
BEING A REPLAT OF THE FOLLOWING

Lot 1, Elizabeth's Addition, Wichita, Sedgwick County, Kansas and the west 392 feet of Reserve and all of Lots 1, 2, 3, 4, 5, 6, 7, and 8, Block 1, Shadybrook Addition to the City of Wichita, Kansas, Sedgwick County, Kansas.

OWNER:

CITY OF WICHITA
ATTN: STEVE POTUCEK
REAL ESTATE MANAGER
CITY HALL - EIGHTH FLOOR
455 N. MAIN
WICHITA, KS 67202

PH (316) 268-4327



BENCH MARK:
SQUARE CUT ON TOP OF
CURB & NORTH END OF
RETURN AT N.W. COR. OF
SHADYBROOK AND CARMEN
ELEV = 152.00 CITY DATUM

BENCH MARK:
SQUARE CUT AT BACK
OF WALKS, N.W. COR.
HILLSIDE & SHADYBROOK
ELEV = 168.32 CITY DATUM

NOTE:
EXISTING BUILDINGS TO
BE REMOVED